


| | | | |
|--|------------------------|-----------------------------|---|
| WAAS CH 45525 W12B | APP CRS 121° | Rwy Idg TDZE Apt Elev | 7620 841 842 |
|--|------------------------|-----------------------------|---|

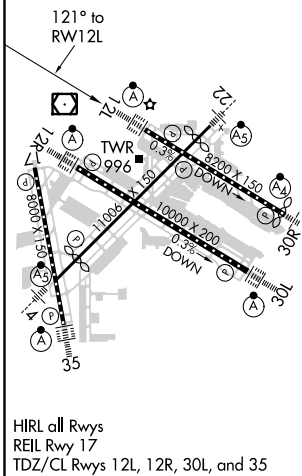
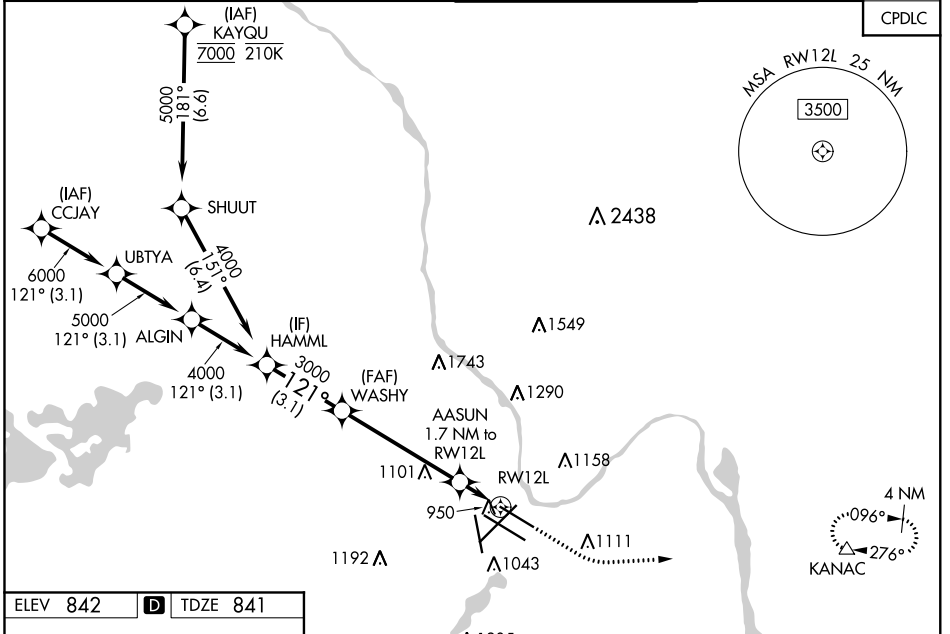
RNAV (GPS) Z RWY 12L

MINNEAPOLIS-ST PAUL INTL/WOLD-CHAMBERLAIN (MSP)

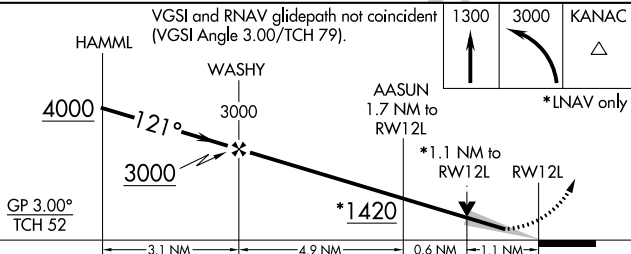
⚠ For uncompensated Baro-VNAV systems, LNAV/VNAV NA below -20°C (-4°F) or above 54°C (130°F). Simultaneous approach authorized with Rwy 12R. Use of FD or AP providing RNAV track guidance required during simultaneous operations. LNAV procedure NA during simultaneous operations. DME/DME RNP-0.3 NA. For inop ALS, increase LPV Cat E visibility to RVR 4000, LNAV/VNAV Cat E visibility to 1 1/2 SM, LNAV Cats C/D/E visibility to RVR 6000.

ALSF-2

 MISSED APPROACH: Climb to 1300, then climbing left turn to 3000 direct KANAC and hold.

| | | | | |
|---|--|---|---|--------------------------|
| D-ATIS ARR 135.35 239.275 DEP 120.8 | MINNEAPOLIS APP CON 118.725 335.65 (Rwy 35) 119.3 335.65 (12L-30R, 4-22, 17) 126.95 335.65 (12R-30L) | MINNEAPOLIS TOWER 123.675 273.55 (17-35) 123.95 273.55 (12L-30R) 126.7 273.55 (12R-30L, 4-22) | GND CON N 121.8 348.6 S 121.9 348.6 W 127.925 348.6 | CLNC DEL 133.2 |
|---|--|---|---|--------------------------|



VGSI and RNAV glidepath not coincident (VGSI Angle 3.00°/TCH 79°).

| | | | | | |
|---|----------|---------------|-------------------------------|-------------------------------|------------------------|
| ELEV 842 | D | TDZE 841 | | | |
|  | | | | | |
| GP 3.00° | TCH 52 | | | | |
| 3.1 NM | 4.9 NM | 0.6 NM | | | |
| 1.1 NM | | | | | |
| 1.7 NM to RW12L | | | | | |
| *1.1 NM to RW12L | | | | | |
| 1300 | 3000 | KANAC | | | |
| | | *NNAV only | | | |
| CATEGORY | A | B | C | D | E |
| LPV DA | | 1041/18 | 200 (200-1/2) | | |
| LNAV/VNAV DA | | 1211/40 | 370 (400-3/4) | | |
| LNAV MDA | 1260/24 | 419 (500-1/2) | 1260/40 | 419 (500-3/4) | |
| C CIRCLING | 1360-1 | 518 (600-1) | 1460-1 3/4 618 (700-1 3/4) | 1660-2 3/4 818 (900-2 3/4) | 1800-3 958 (1000-3) |

NC-1, 31 JAN 2019 to 28 FEB 2019

NC-1, 31 JAN 2019 to 28 FEB 2019