

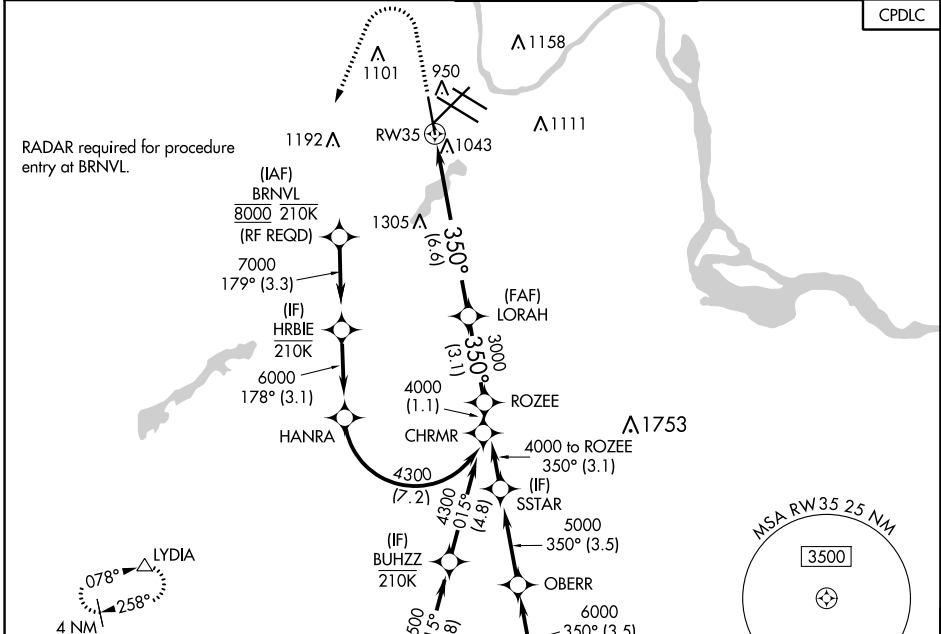
APP CRS	Rwy Idg	8000
350°	TDZE	834
	Apt Elev	842

RNAV (RNP) Y RWY 35

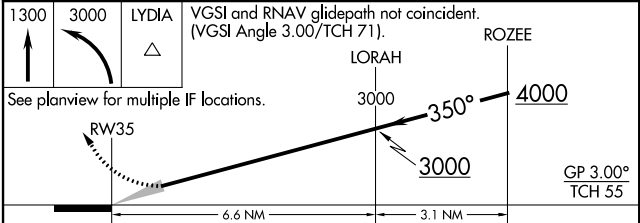
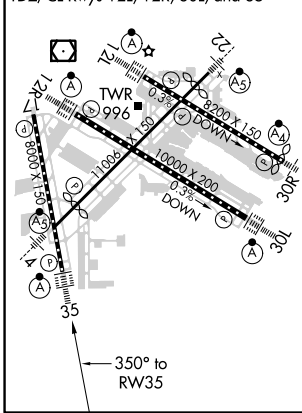
MINNEAPOLIS-ST PAUL INTL/WOLD-CHAMBERLAIN (MSP)

<p>▼ For uncompensated Baro-VNAV systems, procedure NA below -19°C (-2°F) or above 54°C (130°F). For inop ALSF, increase RNP 0.30 all Cats visibility to 1½ miles. GPS required.</p>	<p>ALSF-2</p>	<p>MISSED APPROACH: Climb to 1300 then climbing left turn to 3000 direct LYDIA and hold.</p>
---	---------------	--

<p>D-ATIS</p> <p>ARR 135.35 239.275</p> <p>DEP 120.8</p>	<p>MINNEAPOLIS APP CON</p> <p>118.725 335.65 (Rwy 35)</p> <p>119.3 335.65 (12L-30R, 4-22, 17)</p> <p>126.95 335.65 (12R-30L)</p>	<p>MINNEAPOLIS TOWER</p> <p>123.675 273.55 (17-35)</p> <p>123.95 273.55 (12L-30R)</p> <p>126.7 273.55 (12R-30L, 4-22)</p>	<p>GND CON</p> <p>N 121.8 348.6</p> <p>S 121.9 348.6</p> <p>W 127.925 348.6</p>	<p>CLNC DEL</p> <p>133.2</p>
--	---	--	--	-------------------------------------



ELEV 842	D	TDZE 834
HIRL all Rwys		
REIL Rwy 17		
TDZ/CL Rwys 12L, 12R, 30L, and 35		



CATEGORY	A	B	C	D
RNP 0.11 DA		1213/40	379 (400-¾)	
RNP 0.16 DA		1291/60	457 (500-1¼)	
RNP 0.30 DA		1345-1¼	511 (600-1¼)	

AUTHORIZATION REQUIRED

NC-1, 31 JAN 2019 to 28 FEB 2019

NC-1, 31 JAN 2019 to 28 FEB 2019