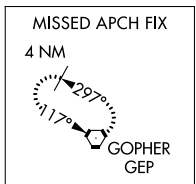
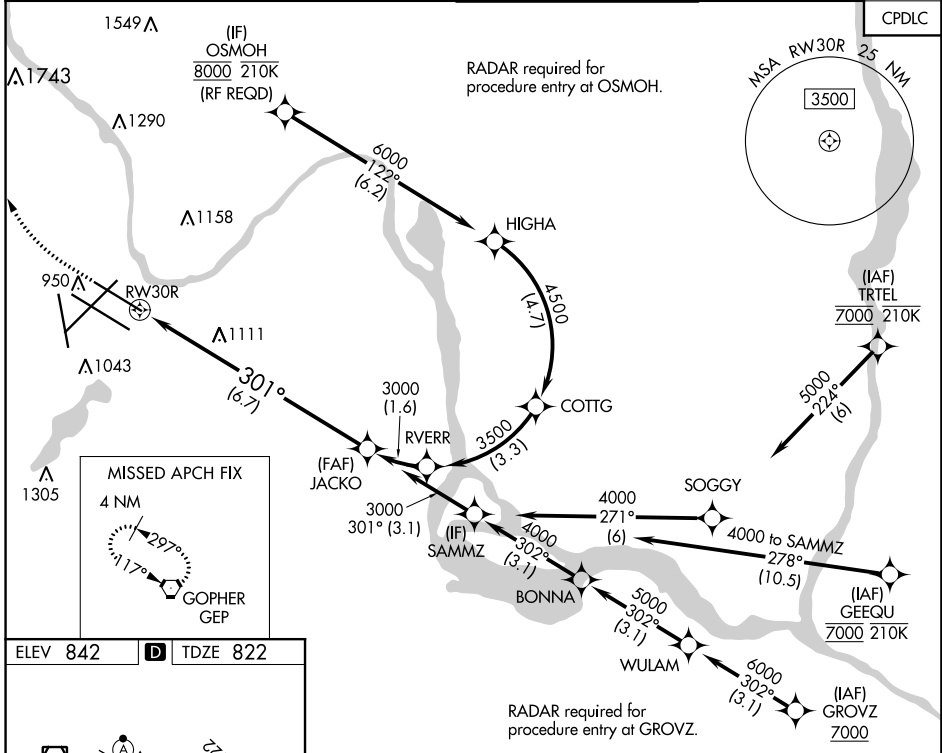


APP CRS	Rwy Idg	8000
301°	TDZE	822
	Apt Elev	842

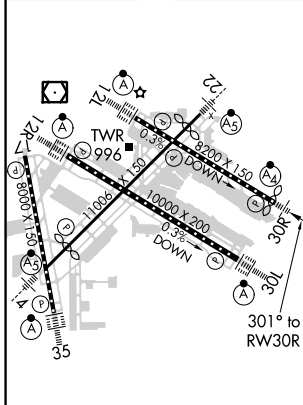
RNAV (RNP) Y RWY 30R

MINNEAPOLIS-ST PAUL INTL/WOLD-CHAMBERLAIN (MSP)

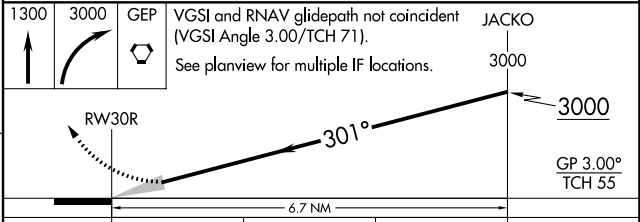
<p>▼ For uncompensated Baro-VNAV systems, procedure NA below -1°C (-2°F) or above 54°C (130°F). Simultaneous approach authorized with Rwy 30L and ILS V RWY 35 (CONVERGING). GPS required. For inop ALS, increase RNP 0.15 all Cats visibility to RVR 4500 and RNP 0.30 Cat D visibility to 1 1/2 SM.</p>	MALSF	MISSED APPROACH: Climb to 1300 then climbing right turn to 3000 direct GEP VORTAC and hold.		
D-ATIS	MINNEAPOLIS APP CON	MINNEAPOLIS TOWER	GND CON	CLNC DEL
ARR 135.35 239.275	118.725 335.65 (Rwy 35)	123.675 273.55 (17-35)	N 121.8 348.6	133.2
DEP 120.8	119.3 335.65 (12L-30R, 4-22, 17)	123.95 273.55 (12L-30R)	S 121.9 348.6	133.2
	126.95 335.65 (12R-30L)	126.7 273.55 (12R-30L, 4-22)	W 127.925 348.6	



ELEV 842	D	TDZE 822
-----------------	----------	-----------------



HIRL all Rwy's
REIL Rwy 17
TDZ/CL Rwy's 12L, 12R, 30L, and 35



CATEGORY	A	B	C	D
RNP 0.15 DA	1097/40 275 (300-3/4)			
RNP 0.30 DA	1298-1 3/8 476 (500-1%)			

AUTHORIZATION REQUIRED

NC-1, 31 JAN 2019 to 28 FEB 2019

NC-1, 31 JAN 2019 to 28 FEB 2019