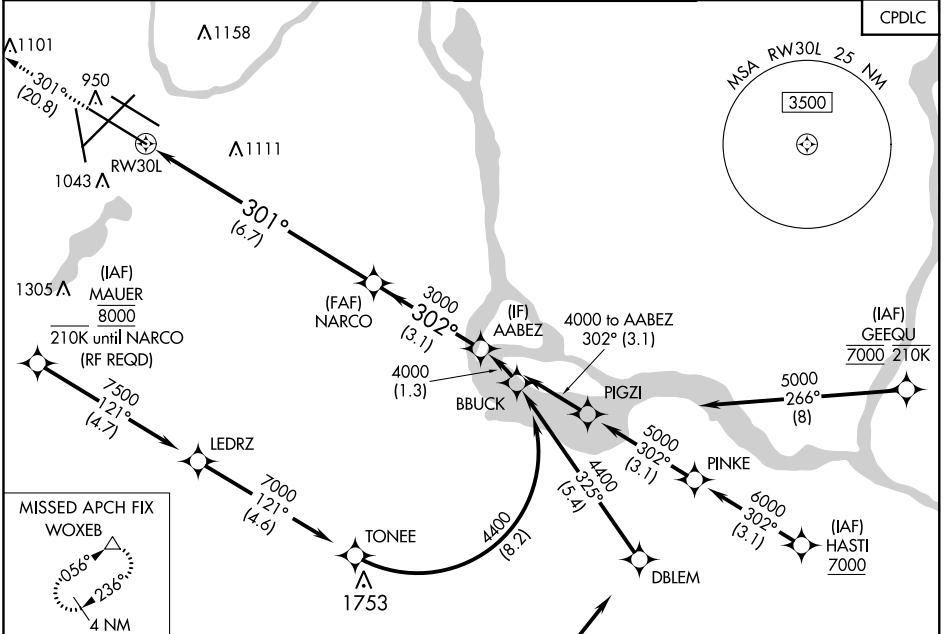


RNAV (RNP) Y RWY 30L

MINNEAPOLIS-ST PAUL INTL/WOLD-CHAMBERLAIN (MSP)

APP CRS 301°	Rwy Idg 10000 TDZE 823 Apt Elev 842
------------------------	--

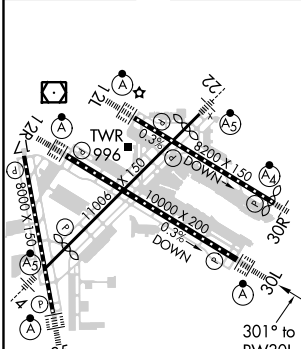
D-ATIS ARR 135.35 239.275 DEP 120.8	MINNEAPOLIS APP CON 118.725 335.65 (Rwy 35) 119.3 335.65 (12L-30R, 4-22, 17) 126.95 335.65 (12R-30L)	MINNEAPOLIS TOWER 123.675 273.55 (17-35) 123.95 273.55 (12L-30R) 126.7 273.55 (12R-30L, 4-22)	GND CON N 121.8 348.6 S 121.9 348.6 W 127.925 348.6	CLNC DEL 133.2
	MISSED APPROACH: Climb to 3000 on track 301° to WOXEB and hold.			



NC-1, 31 JAN 2019 to 28 FEB 2019

NC-1, 31 JAN 2019 to 28 FEB 2019

ELEV 842	D	TDZE 823
-----------------	----------	-----------------



3000 ↑ fr 301°	WOXEB △	VGSI and RNAV glidepath not coincident. (VGSI Angle 3.00°/TCH 78).	AABEZ 4000
RWY 30L		NARCO 3000	3000 GP 3.00° TCH 55
6.7 NM		3.1 NM	
CATEGORY	A	B	C
RNP 0.30 DA	1150/30 327 (400-%)		

HIRL all Rws
REIL Rwy 17
TDZ/CL Rws 12L, 12R, 30L, and 35

AUTHORIZATION REQUIRED