

| | | |
|--|------------------------|---|
| WAAS CH 72931 W04A | APP CRS 045° | Rwy Idg 9456 TDZE 832 Apt Elev 842 |
|--|------------------------|---|

RNAV (GPS) RWY 4

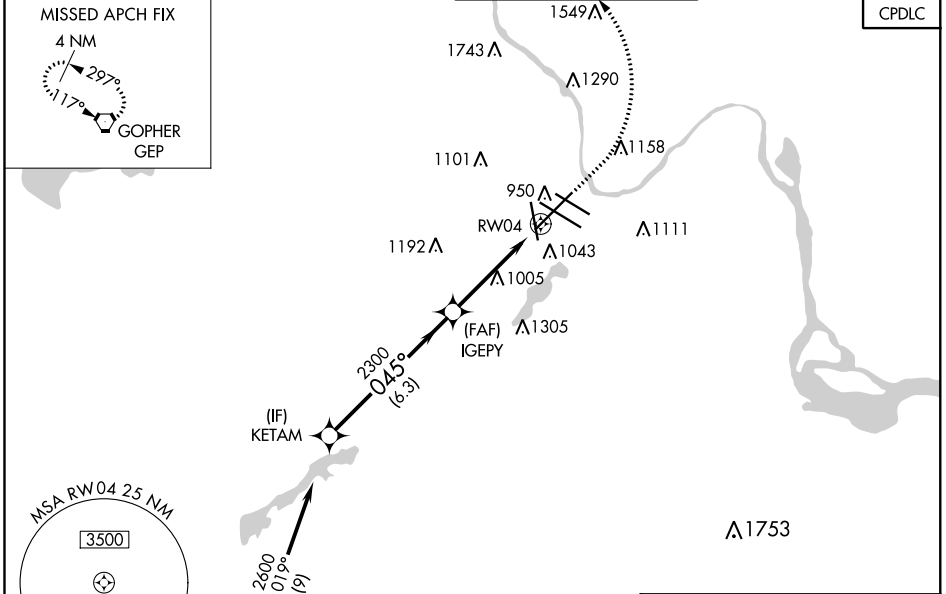
MINNEAPOLIS-ST PAUL INTL/WOLD-CHAMBERLAIN (MSP)

⚠ For uncompensated Baro-VNAV systems, LNAV/VNAV NA below -16°C (-4°F) or above 54°C (130°F). DME/DME RNP-0.3 NA. For inoperative ALS, increase LPV Cat E visibility to RVR 4000, LNAV/VNAV Cat E visibility to 1½ SM, LNAV Cat E visibility to 1¼ SM. # RVR 1800 authorized with use of FD or AP or HUD to DA.

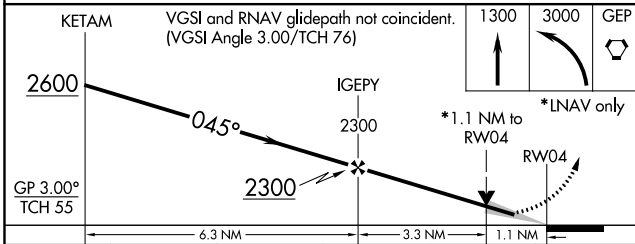


MISSED APPROACH: Climb to 1300 then climbing left turn to 3000 direct GEP VORTAC and hold.

| | | | | |
|--|--|--|---|--------------------------|
| D-ATIS ARR 135.35 239.275 DEP 120.8 | MINNEAPOLIS APP CON 118.725 335.65 (Rwy 35) 119.3 335.65 (12L-30R, 4-22, 17) 126.95 335.65 (12R-30L) | MINNEAPOLIS TOWER 123.675 273.55 (17-35) 123.95 273.55 (1 2L-30R) 126.7 273.55 (12R-30L, 4-22) | GND CON N 121.8 348.6 S 121.9 348.6 W 127.925 348.6 | CLNC DEL 133.2 |
|--|--|--|---|--------------------------|

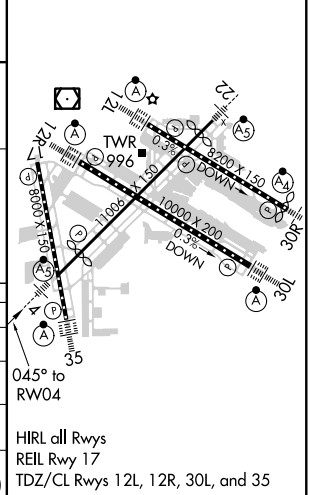


Procedure NA for arrivals at LYDIA on V505 southbound and on V26 westbound.



| | |
|----------|-------------------|
| ELEV 842 | D TDZE 832 |
|----------|-------------------|

| | | | | | |
|-------------------|---------------------|----------------------|----------------------|---------------------|---|
| CATEGORY | A | B | C | D | E |
| LPV DA# | 1032/24 200 (200-½) | | | | |
| LNAV/VNAV DA | 1279/50 447 (500-1) | | | | |
| LNAV MDA | 1260/24 428 (500-½) | 1260/40 428 (500-¾) | 1260/45 428 (500-¾) | | |
| C CIRCLING | 1360-1 518 (600-1) | 1460-1¾ 618 (700-1¾) | 1660-2¾ 818 (900-2¾) | 1800-3 958 (1000-3) | |



NC-1, 31 JAN 2019 to 28 FEB 2019

NC-1, 31 JAN 2019 to 28 FEB 2019