

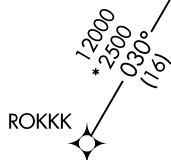
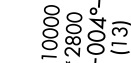
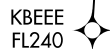
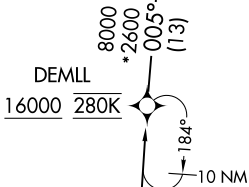
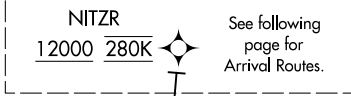
(NITZR.NITZR3) 18032

NITZR THREE ARRIVAL (RNAV) Transition Routes

MINNEAPOLIS-ST PAUL INTL/WOLD-CHAMBERLAIN (MSP)

AL-264 (FAA) MINNEAPOLIS, MINNESOTA

MINNEAPOLIS APP CON
135.475 335.5
D-ATIS ARR
135.35 239.275



- NOTE: Expect "descend via" clearance and runway transition assignment by Center. Approach will assign landing Rwy.
- NOTE: Turbojet aircraft descend via Mach number until intercepting 280K. Maintain 280K until slowed by the STAR, or assigned by ATC.
- NOTE: DME/DME/IRU or GPS required.
- NOTE: For turbojet aircraft only.
- NOTE: RADAR required.
- NOTE: RNAV 1.

(CONTINUED ON FOLLOWING PAGE)

DEMLL TRANSITION (DEMLL.NITZR3)
ROKKK TRANSITION (ROKKK.NITZR3)
RRAZZ TRANSITION (RRAZZ.NITZR3)

NOTE: Chart not to scale.

NC-1, 31 JAN 2019 to 28 FEB 2019

NC-1, 31 JAN 2019 to 28 FEB 2019

NITZR THREE ARRIVAL (RNAV) Transition Routes

MINNEAPOLIS, MINNESOTA

(NITZR.NITZR3) 05JAN17

MINNEAPOLIS-ST PAUL INTL/WOLD-CHAMBERLAIN (MSP)