

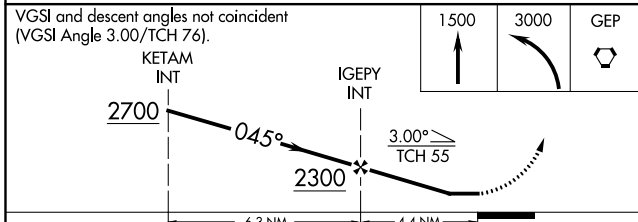
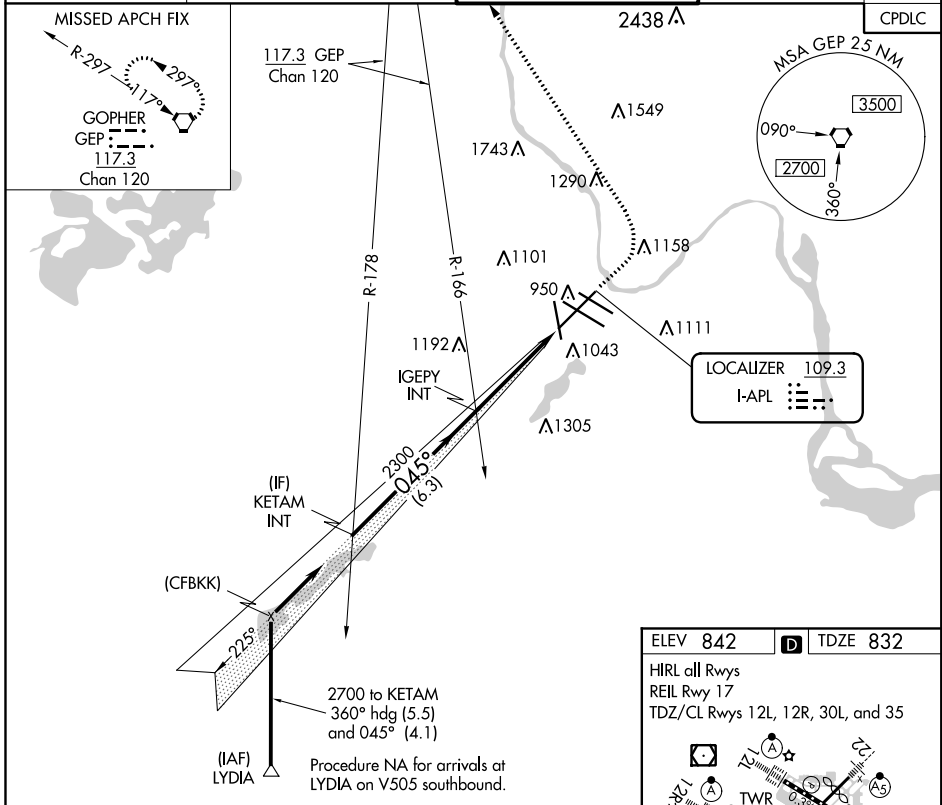
LOC I-APL 109.3	APP CRS 045°	Rwy Idg 9456
		TDZE 832
		Apt Elev 842

LOC RWY 4

MINNEAPOLIS-ST PAUL INTL/WOLD-CHAMBERLAIN (MSP)

	For inoperative MALS/R, increase S-4 Cat E visibility to 1 1/2 mile.		MISSED APPROACH: Climb to 1500 then climbing left turn to 3000 direct GEP VORTAC and hold.

D-ATIS ARR 135.35 239.275 DEP 120.8	MINNEAPOLIS APP CON 118.725 335.65 (Rwy 35) 119.3 335.65 (12L-30R, 4-22, 17) 126.95 335.65 (12R-30L)	MINNEAPOLIS TOWER 123.675 273.55 (17-35) 123.95 273.55 (12L-30R) 126.7 273.55 (12R-30L, 4-22)	GND CON N 121.8 348.6 S 121.9 348.6 W 127.925 348.6	CLNC DEL 133.2
---------------------------------------------------------	------------------------------------------------------------------------------------------------------------------------------------	-----------------------------------------------------------------------------------------------------------------------------	-----------------------------------------------------------------------------------	--------------------------



CATEGORY	A	B	C	D	E
	S-4	1340/24 508 (500-1/2)	1340/55 508 (500-1)		
CIRCLING	1360-1 518 (600-1)	1460-1 3/4 618 (700-1 3/4)	1660-2 3/4 818 (900-2 3/4)	1800-3 958 (1000-3)	

ELEV 842	TDZE 832
HIRL all Rwys REIL Rwy 17 TDZ/CL Rwys 12L, 12R, 30L, and 35	
045° 4.4 NM from FAF	
FAF to MAP 4.4 NM	
Knots	60 90 120 150 180
Min:Sec	4:24 2:56 2:12 1:46 1:28

NC-1, 31 JAN 2019 to 28 FEB 2019

NC-1, 31 JAN 2019 to 28 FEB 2019

LOC RWY 4