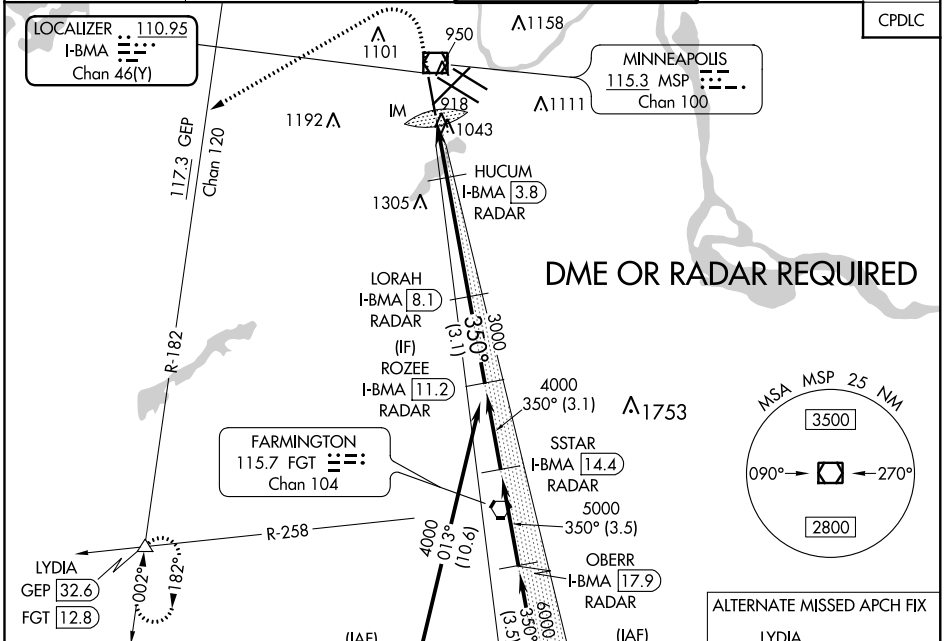


LOC/DME I-BMA 110.95 Chan 46 (Y)	APP CRS 350°	Rwy ldg TDZE Apt Elev	8000 834 842
--	------------------------	-----------------------------	---

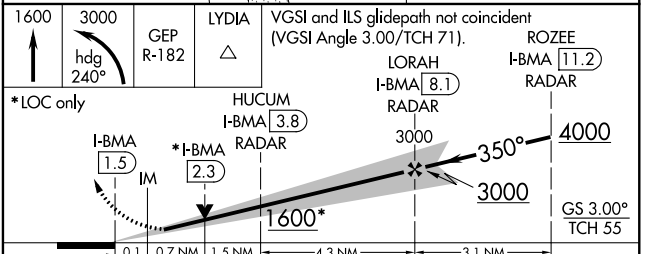
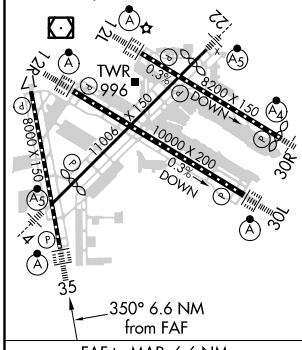
ILS Z or LOC RWY 35

MINNEAPOLIS-ST PAUL INTL/WOLD-CHAMBERLAIN (MSP)

<p>▼ DME or RADAR required. For inop ALS, increase S-ILS 35 Cat E visibility to RVR 4000 and S-LOC 35 Cats C/D/E visibility to RVR 5500.</p> <p>▲ ALSF-2</p>	<p>MISSED APPROACH: Climb to 1600 then climbing left turn to 3000 on heading 240° and on GEP VORTAC R-182 to LYDIA INT/GEP 32.6 DME and hold.</p>		<p>CINC DEL 133.2</p>
	<p>D-ATIS ARR 135.35 239.275 DEP 120.8</p>	<p>MINNEAPOLIS APP CON 118.725 335.65 (Rwy 35) 119.3 335.65 (12L-30R, 4-22, 17) 126.95 335.65 (12R-30L)</p>	



ELEV 842	D	TDZE 834
HIRL all Rwys		
REL Rwy 17		
TDZ/CL Rwys 12L, 12R, 30L, and 35		



CATEGORY	A	B	C	D	E
S-ILS 35	1034/18 200 (200-½)				
S-LOC 35	1180/24	346 (400-½)	1180/30 346 (400-¾)		
C CIRCLING	1360-1	518 (600-1)	1460-1¾	1660-2¾	1800-3
			618 (700-1¾)	818 (900-2¾)	958 (1000-3)

NC-1, 31 JAN 2019 to 28 FEB 2019

NC-1, 31 JAN 2019 to 28 FEB 2019