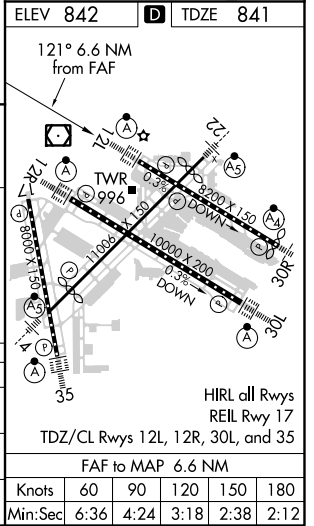
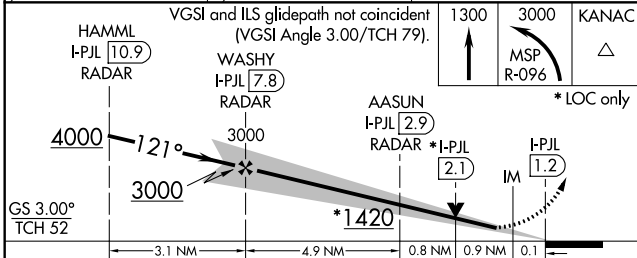
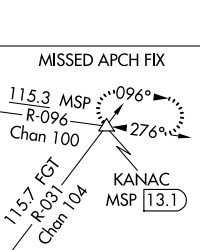
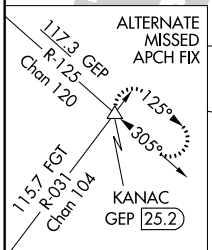
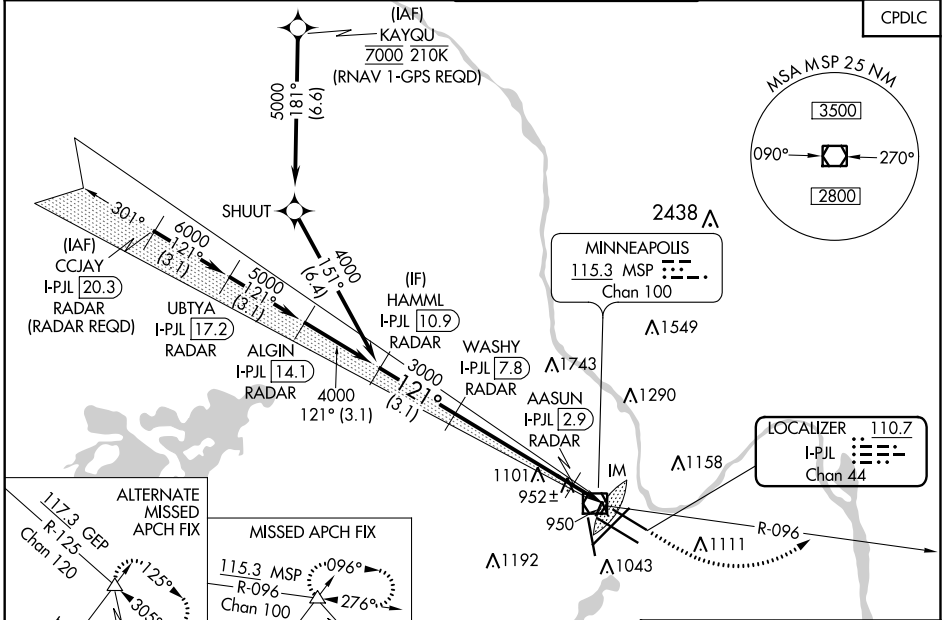


LOC/DME I-PJL 110.7 Chan 44	APP CRS 121°	Rwy Idg TDZE Apt Elev	7620 841 842
---	------------------------	-----------------------------	---

ILS or LOC RWY 12L

MINNEAPOLIS-ST PAUL INTL/WOLD-CHAMBERLAIN (MSP)

⚠ Simultaneous approach authorized with Rwy 12R. For inop ALS, increase S-ILS 12L Cat E visibility to RVR 4000, S-LOC 12L Cat C/D/E visibility to RVR 5500. DME or RADAR required.	MINNEAPOLIS APP CON ARR 135.35 239.275 DEP 120.8		MINNEAPOLIS TOWER 123.675 273.55 (17-35) 123.95 273.55 (12L-30R) 126.7 273.55 (12R-30L, 4-22)		GND CON N 121.8 348.6 S 121.9 348.6 W 127.925 348.6		CLNC DEL 133.2
	ALSF-2 		MISSED APPROACH: Climb to 1300, then climbing left turn to 3000 on MSP VOR/DME R-096 to KANAC INT/MSP 13.1 DME and hold.				



CATEGORY	A	B	C	D	E
S-ILS 12L	1041/18 200 (200-½)				
S-LOC 12L	1220/24	379 (400-½)	1220/35 379 (400-¾)		
CIRCLING	1360-1 518 (600-1)	1460-1¾	1660-2¾	1800-3	
		618 (700-1¾)	818 (900-2¾)	958 (1000-3)	

NC-1, 31 JAN 2019 to 28 FEB 2019

NC-1, 31 JAN 2019 to 28 FEB 2019