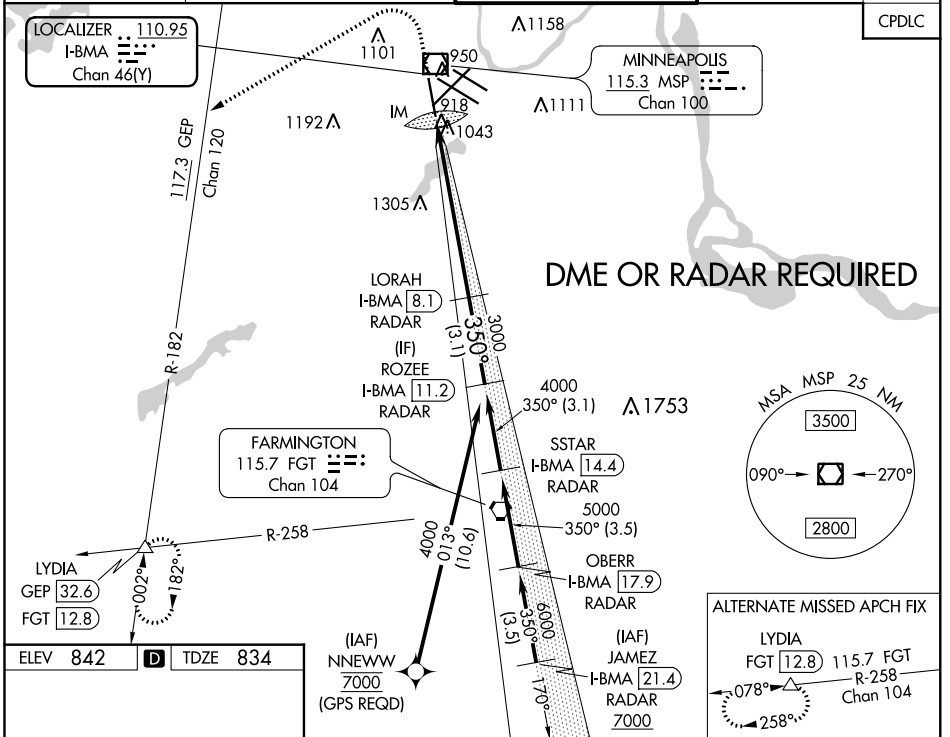


| | | | |
|--|------------------------|-----------------------------|---|
| LOC/DME I-BMA 110.95 Chan 46 (Y) | APP CRS 350° | Rwy ldg TDZE Apt Elev | 8000 834 842 |
|--|------------------------|-----------------------------|---|

ILS RWY 35 (SA CAT I)

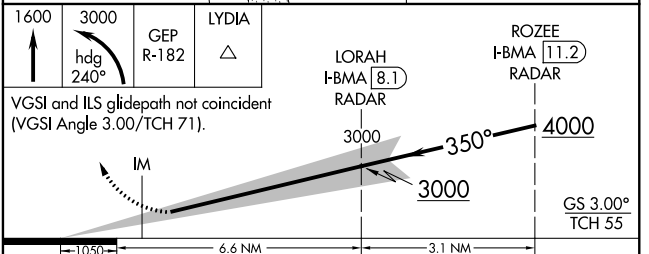
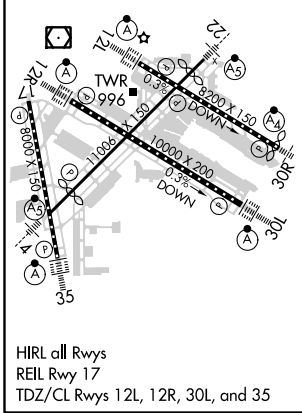
MINNEAPOLIS-ST PAUL INTL/WOLD-CHAMBERLAIN (MSP)

| | | | | |
|---|--|--|---|---|
| V DME or RADAR required. Requires specific OPSPEC, MSPEC, or LOA approval and use of HUD to DH. A ALSF-2 | MISSED APPROACH: Climb to 1600 then climbing left turn to 3000 on heading 240° and on GEP VORTAC R-182 to LYDIA INT/GEP 32.6 DME and hold. | | | |
| | D-ATIS ARR 135.35 239.275 DEP 120.8 | MINNEAPOLIS APP CON 118.725 335.65 (Rwy 35) 119.3 335.65 (12L-30R, 4-22, 17) 126.95 335.65 (12R-30L) | MINNEAPOLIS TOWER 123.675 273.55 (17-35) 123.95 273.55 (12L-30R) 126.7 273.55 (12R-30L, 4-22) | GND CON N 121.8 348.6 S 121.9 348.6 W 127.925 348.6 |



NC-1, 31 JAN 2019 to 28 FEB 2019

NC-1, 31 JAN 2019 to 28 FEB 2019



| | | | | |
|----------|----------------------|---|---|---|
| CATEGORY | A | B | C | D |
| S-ILS 35 | RA 157/14 150 DA 984 | | | |

SA CATEGORY I ILS - SPECIAL AIRCREW & AIRCRAFT CERTIFICATION REQUIRED