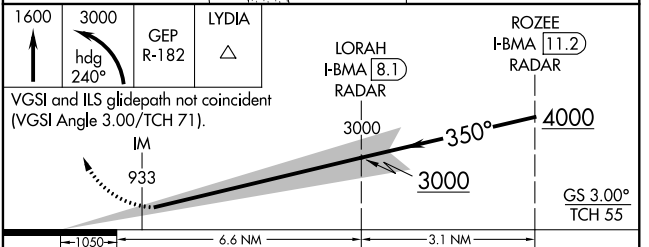
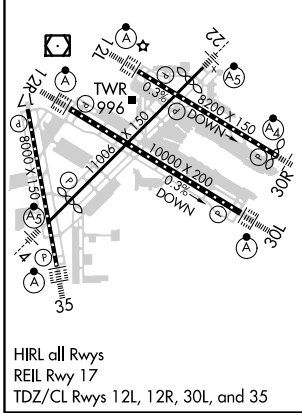
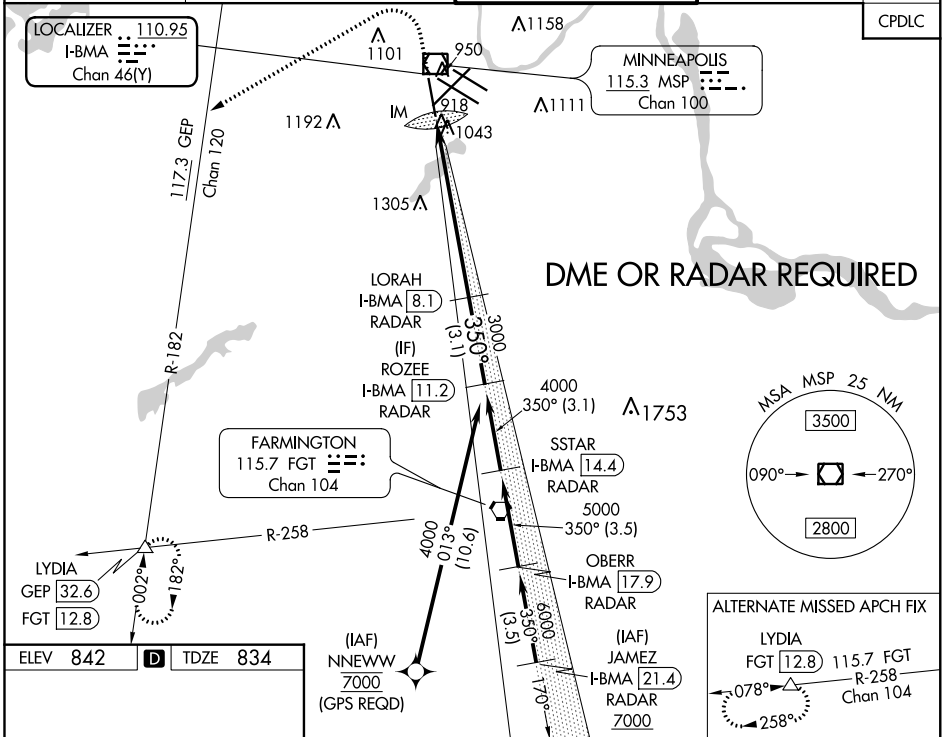


LOC/DME I-BMA 110.95 Chan 46 (Y)	APP CRS 350°	Rwy ldg TDZE 8000 834	Apt Elev 842
--	------------------------	---	------------------------

ILS RWY 35 (CAT II & III)

MINNEAPOLIS-ST PAUL INTL/WOLD-CHAMBERLAIN (MSP)

<p>DME or RADAR required.</p>		<p>ALSF-2</p>	<p>MISSED APPROACH: Climb to 1600 then climbing left turn to 3000 on heading 240° and on GEP VORTAC R-182 to LYDIA INT/GEF 32.6 DME and hold.</p>	
<p>D-ATIS</p> <p>ARR 135.35 239.275</p> <p>DEP 120.8</p>	<p>MINNEAPOLIS APP CON</p> <p>118.725 335.65 (Rwy 35)</p> <p>119.3 335.65 (12L-30R, 4-22, 17)</p> <p>126.95 335.65 (12R-30L)</p>	<p>MINNEAPOLIS TOWER</p> <p>123.675 273.55 (17-35)</p> <p>123.95 273.55 (12L-30R)</p> <p>126.7 273.55 (12R-30L, 4-22)</p>	<p>GND CON</p> <p>N 121.8 348.6</p> <p>S 121.9 348.6</p> <p>W 127.925 348.6</p>	<p>CINC DEL</p> <p>133.2</p>



CATEGORY	A	B	C	D
S-ILS 35	CAT II RA 106/12 110 DA 944			
S-ILS 35	CAT III RVR 06			

CATEGORY II & III ILS - SPECIAL AIRCREW & AIRCRAFT CERTIFICATION REQUIRED

NC-1, 31 JAN 2019 to 28 FEB 2019

NC-1, 31 JAN 2019 to 28 FEB 2019