

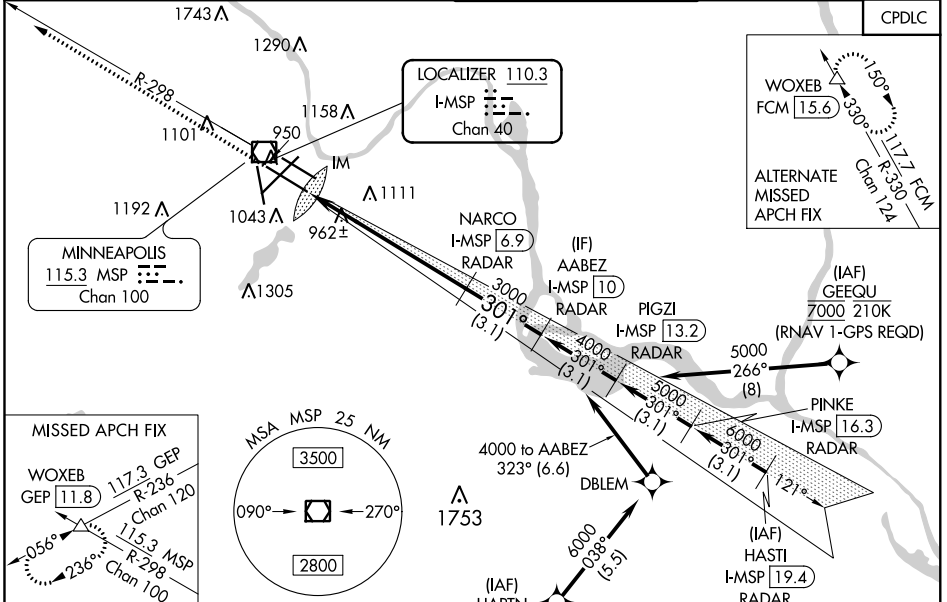
LOC/DME I-MSP 110.3 Chan 40	APP CRS 301°	Rwy Idg TDZE 823 Apt Elev 842	10000
---	------------------------	---	--------------

MINNEAPOLIS-ST PAUL INTL/WOLD-CHAMBERLAIN (MSP)

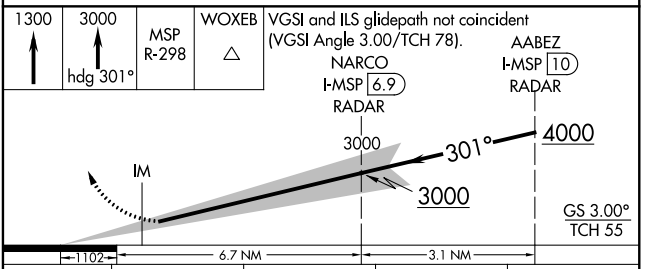
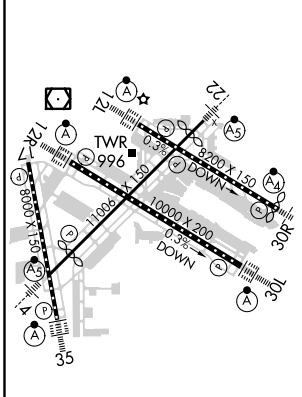
ILS RWY 30L (CAT II)

<p>⚠ DME or RADAR required. Simultaneous approaches authorized with Rwy 30R and ILS V RWY 35 (CONVERGING). RVR 1000 authorized with specific OPSPEC, MSPPEC, or LOA approval and use of autoland or HUD to touchdown.</p>	<p>ALSF-2 </p>	<p>MISSED APPROACH: Climb to 1300 then climb to 3000 on heading 301° and MSP ROR/DME R-298 to WOXEB INT/ GEP VORTAC 11.8 DME and hold.</p>
--	--------------------	--

D-ATIS ARR 135.35 239.275 DEP 120.8	MINNEAPOLIS APP CON 118.725 335.65 (Rwy 35) 119.3 335.65 (12L-30R, 4-22, 17) 126.95 335.65 (12R-30L)	MINNEAPOLIS TOWER 123.675 273.55 (17-35) 123.95 273.55 (12L-30R) 126.7 273.55 (12R-30L, 4-22)	GND CON N 121.8 348.6 S 121.9 348.6 W 127.925 348.6	CLNC DEL 133.2
---	---	--	--	--------------------------



ELEV 842	D	TDZE 823
-----------------	----------	-----------------



CATEGORY	A	B	C	D
S-ILS 30L	RA NA/12 100 DA 923			

CATEGORY II ILS - SPECIAL AIRCREW & AIRCRAFT CERTIFICATION REQUIRED

HIRL all Rwys
REIL Rwy 17
TDZ/CL Rws 12L, 12R, 30L, and 35

ILS RWY 30L (CAT II)

NC-1, 31 JAN 2019 to 28 FEB 2019

NC-1, 31 JAN 2019 to 28 FEB 2019