

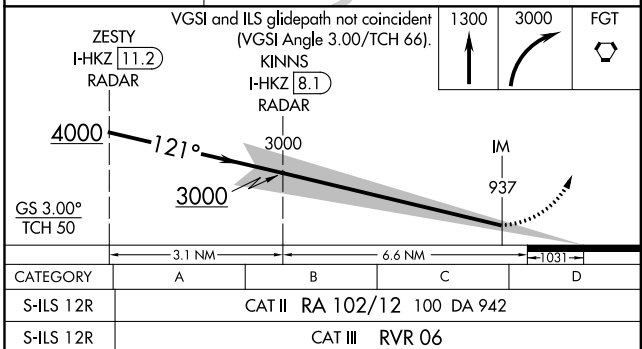
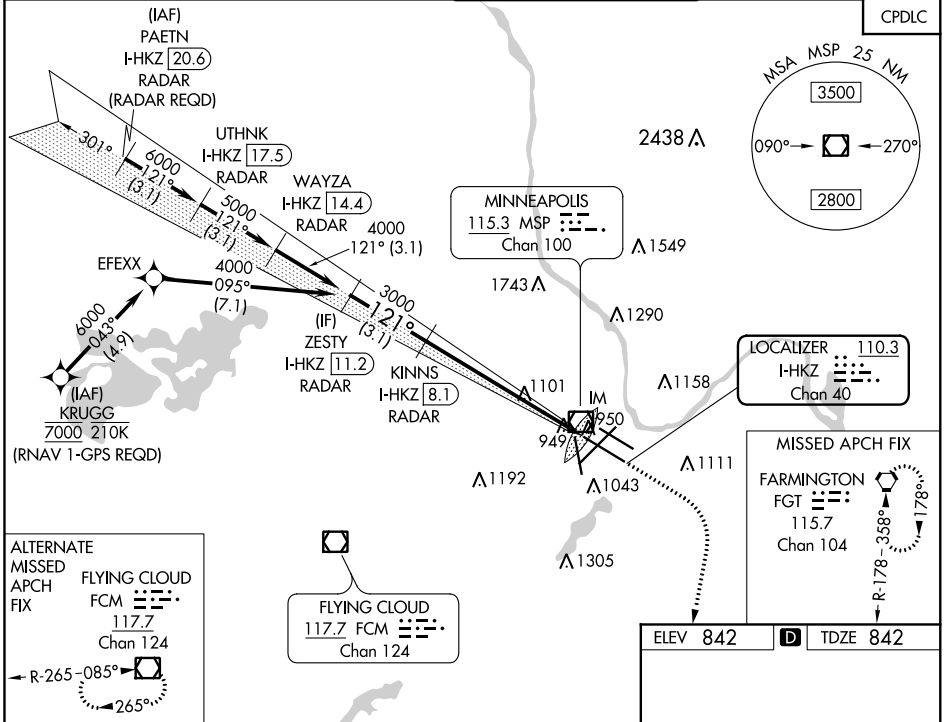
LOC/DME I-HKZ 110.3 Chan 40	APP CRS 121°	Rwy Idg TDZE 842 Apt Elev 842	10000
---	------------------------	---	--------------

ILS RWY 12R (CAT II & III)

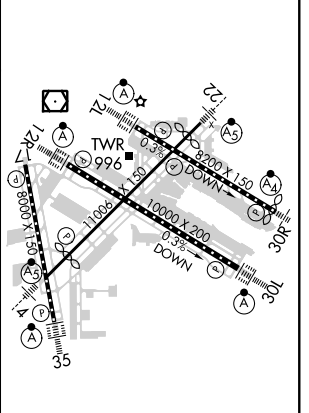
MINNEAPOLIS-ST PAUL INTL/WOLD-CHAMBERLAIN (MSP)

⚠ DME or RADAR required. Simultaneous approach authorized with Rwy 12L. CAT II: RVR 1000 authorized with specific OPSPEC, MSPEC, or LOA approval and use of autoland or HUD to touchdown.	ALSF-2 	MISSED APPROACH: Climb to 1300 then climbing right turn to 3000 direct FGT VORTAC and hold.
---	------------	---

D-ATIS ARR 135.35 239.275 DEP 120.8	MINNEAPOLIS APP CON 118.725 335.65 (Rwy 35) 119.3 335.65 (12L-30R, 4-22, 17) 126.95 335.65 (12R-30L)	MINNEAPOLIS TOWER 123.675 273.55 (17-35) 123.95 273.55 (12L-30R) 126.7 273.55 (12R-30L, 4-22)	GND CON N 121.8 348.6 S 121.9 348.6 W 127.925 348.6	CLNC DEL 133.2
---	--	---	---	--------------------------



ELEV 842	D TDZE 842
----------	-------------------



CATEGORY II & III ILS - SPECIAL AIRCREW & AIRCRAFT CERTIFICATION REQUIRED

HIRL all Rwys
REIL Rwy 17
TDZ/CL Rwys 12L, 12R, 30L, and 35

NC-1, 31 JAN 2019 to 28 FEB 2019

NC-1, 31 JAN 2019 to 28 FEB 2019