

LOC/DME I-PJL 110.7 Chan 44	APP CRS 121°	Rwy Idg TDZE Apt Elev	7620 841 842
---	------------------------	-----------------------------	---

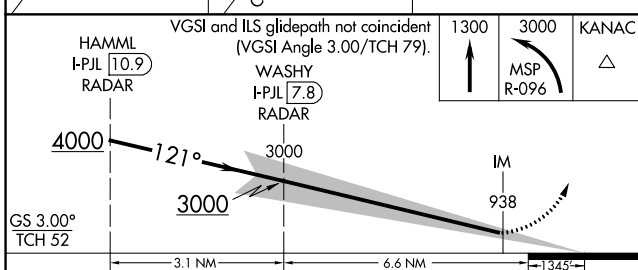
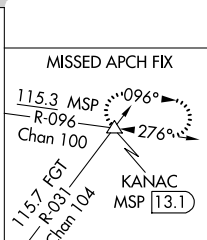
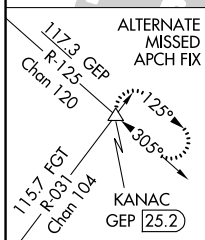
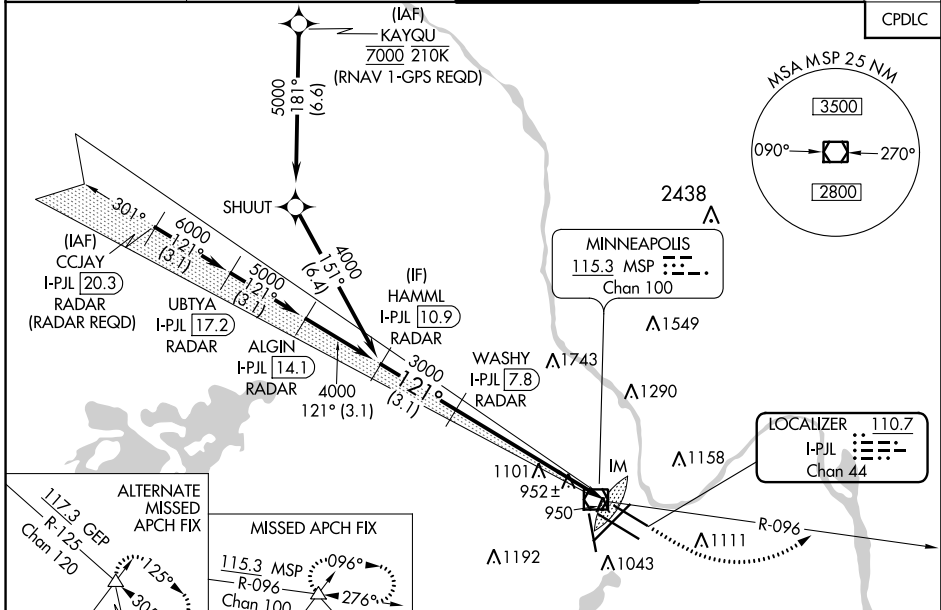
ILS RWY 12L (CAT II & III)

MINNEAPOLIS-ST PAUL INTL/WOLD-CHAMBERLAIN (MSP)

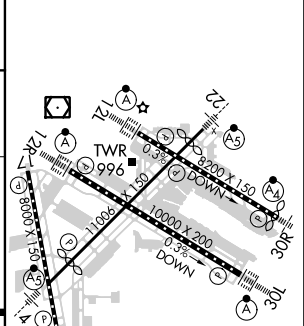
⚠ Simultaneous approach authorized with Rwy 12R.
⚠ CAT II: RVR 1000 authorized with specific OPSPEC, MSPEC, or LOA approval and use of autoland or HUD to touchdown.
 DME or RADAR required.

ALSF-2
⚠ MISSED APPROACH: Climb to 1300, then climbing left turn to 3000 on MSP VOR/DME R-096 to KANAC INT/MSP 13.1 DME and hold.

D-ATIS ARR 135.35 239.275 DEP 120.8	MINNEAPOLIS APP CON 118.725 335.65 (Rwy 35) 119.3 335.65 (12L-30R, 4-22, 17) 126.95 335.65 (12R-30L)	MINNEAPOLIS TOWER 123.675 273.55 (17-35) 123.95 273.55 (12L-30R) 126.7 273.55 (12R-30L, 4-22)	GND CON N 121.8 348.6 S 121.9 348.6 W 127.925 348.6	CLNC DEL 133.2
---	--	---	---	--------------------------



ELEV 842	D TDZE 841
----------	-------------------



CATEGORY	A	B	C	D
S-ILS 12L	CAT II RA 91/12 100 DA 941			
S-ILS 12L	CAT III RVR 07			

CATEGORY II & III ILS - SPECIAL AIRCREW & AIRCRAFT CERTIFICATION REQUIRED

HIRL all Rwys
 REIL Rwy 17
 TDZ/CL Rwys 12L, 12R, 30L, and 35

NC-1, 31 JAN 2019 to 28 FEB 2019

NC-1, 31 JAN 2019 to 28 FEB 2019