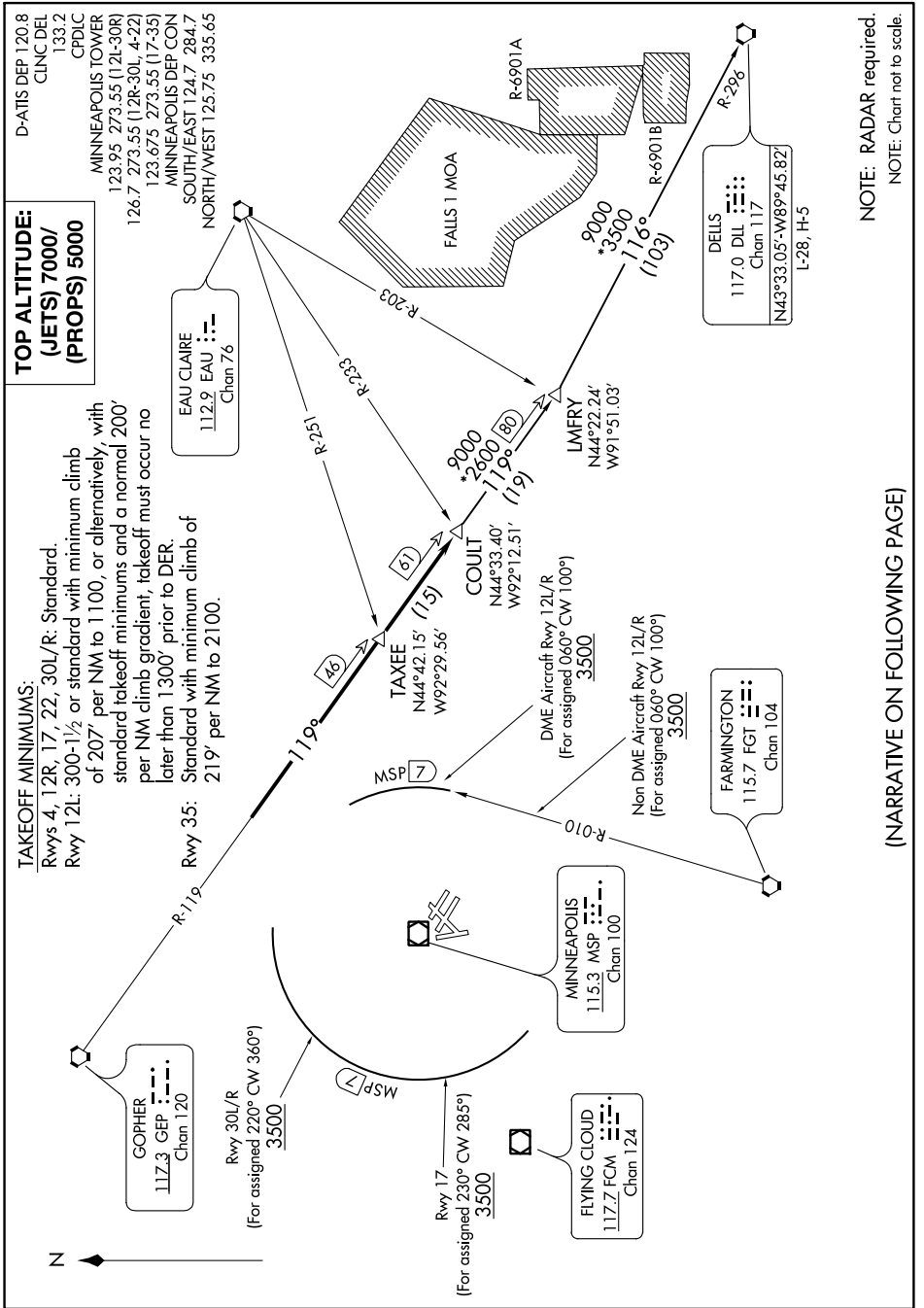


COULT SEVEN DEPARTURE



**TOP ALTITUDE:
(JETS) 7000/
(PROPS) 5000**

TAKEOFF MINIMUMS:

Rwys 4, 12R, 17, 22, 30L/R: Standard.
 Rwy 12L: 300-1½ or standard with minimum climb of 207' per NM to 1100, or alternatively, with standard takeoff minimums and a normal 200' per NM climb gradient, takeoff must occur no later than 1300' prior to DER.
 Rwy 35: Standard with minimum climb of 219' per NM to 2100.

D-ATIS DEP 120.8
 CINC DEL 133.2
 CPDLC
 MINNEAPOLIS TOWER
 123.95 273.55 (12L-30R)
 126.7 273.55 (12R-30L, 4-22)
 123.675 273.55 (17-35)
 MINNEAPOLIS DEP CON
 SOUTH/EAST 124.7 284.7
 NORTH/WEST 125.75 335.65

EAU CLAIRE
 112.9 EAU
 Chan 76

DELIS
 117.0 DIL
 Chan 117
 N43°33.05'-W89°45.82'
 L-28, H-5

MINNEAPOLIS
 115.3 MSP
 Chan 100

FLYING CLOUD
 117.7 FCM
 Chan 124

FARMINGTON
 115.7 FGT
 Chan 104

NOTE: RADAR required.
 NOTE: Chart not to scale.

(NARRATIVE ON FOLLOWING PAGE)