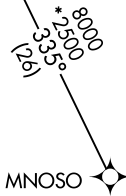
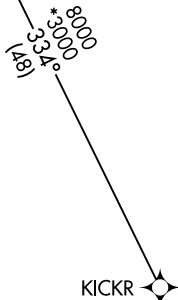
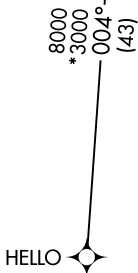
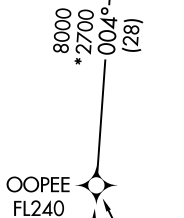
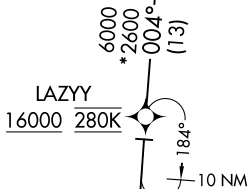


BLUEM THREE ARRIVAL (RNAV) Transition Routes AL-264 (FAA) MINNEAPOLIS, MINNESOTA

MINNEAPOLIS APP CON
135.475 335.5
D-ATIS ARR
135.35 239.275



- NOTE: Expect "descend via" clearance and runway transition assignment by Center. Approach will assign landing Rwy.
- NOTE: Turbojet aircraft descend via Mach number until intercepting 280K. Maintain 280K until slowed by the STAR, or assigned by ATC.
- NOTE: DME/DME/IRU or GPS required.
- NOTE: For Turbojet aircraft only.
- NOTE: RADAR required.
- NOTE: RNAV 1.

(CONTINUED ON FOLLOWING PAGE)

- HELLO TRANSITION (HELLO.BLUEM3)
- KICKR TRANSITION (KICKR.BLUEM3)
- LAZYY TRANSITION (LAZYY.BLUEM3)
- MNOSO TRANSITION (MNOSO.BLUEM3)
- OOPEE TRANSITION (OOPEE.BLUEM3)

NOTE: Chart note to scale.

BLUEM THREE ARRIVAL (RNAV) Transition Routes

NC-1, 31 JAN 2019 to 28 FEB 2019

NC-1, 31 JAN 2019 to 28 FEB 2019