

NC-1, 31 JAN 2019 to 28 FEB 2019

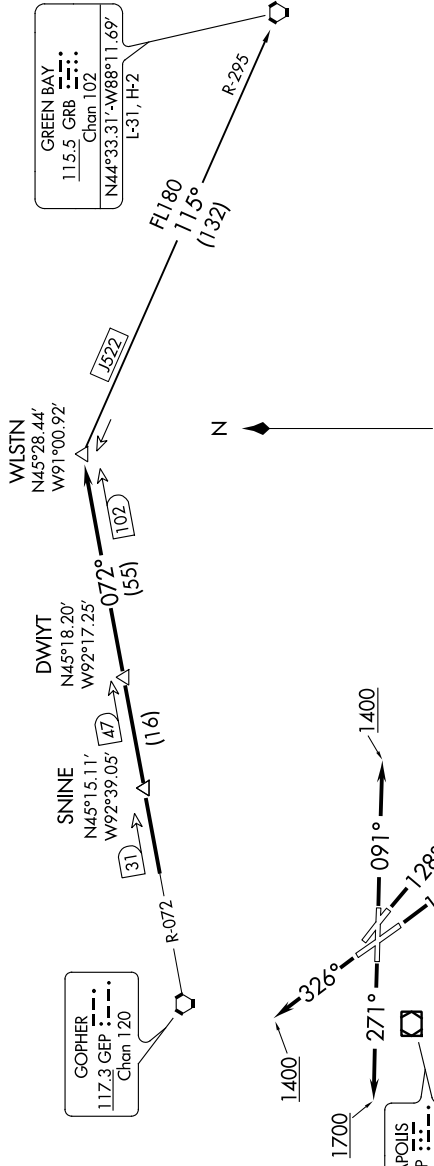
TOP ALTITUDE:
(JETS) 7000/
(PROPS) 5000

ATIS 118.35
CLINC DEL 121.675
ST. PAUL TOWER * 119.1 257.8
MINNEAPOLIS DEP CON 121.2 335.65

GREEN BAY
115.5 GRB
Chan 102
N44°33.31'-W88°11.69'
L-31, H-2

GOPHER
117.3 GEP
Chan 120

MINNEAPOLIS
115.3 MSP
Chan 100



TAKEOFF MINIMUMS

- Rwy 9: Standard with minimum climb of 340' per NM to 1300.
- Rwy 13: Standard with minimum climb of 235' per NM to 1500.
- Rwy 14: Standard.
- Rwy 27: 600-2 or standard with minimum climb of 442' per NM to 1500.
- Rwy 31: NA-Obstacles.
- Rwy 32: Standard with minimum climb of 340' per NM to 3000.

NOTE: RADAR required.
NOTE: Chart not to scale.

(NARRATIVE ON FOLLOWING PAGE)

NC-1, 31 JAN 2019 to 28 FEB 2019