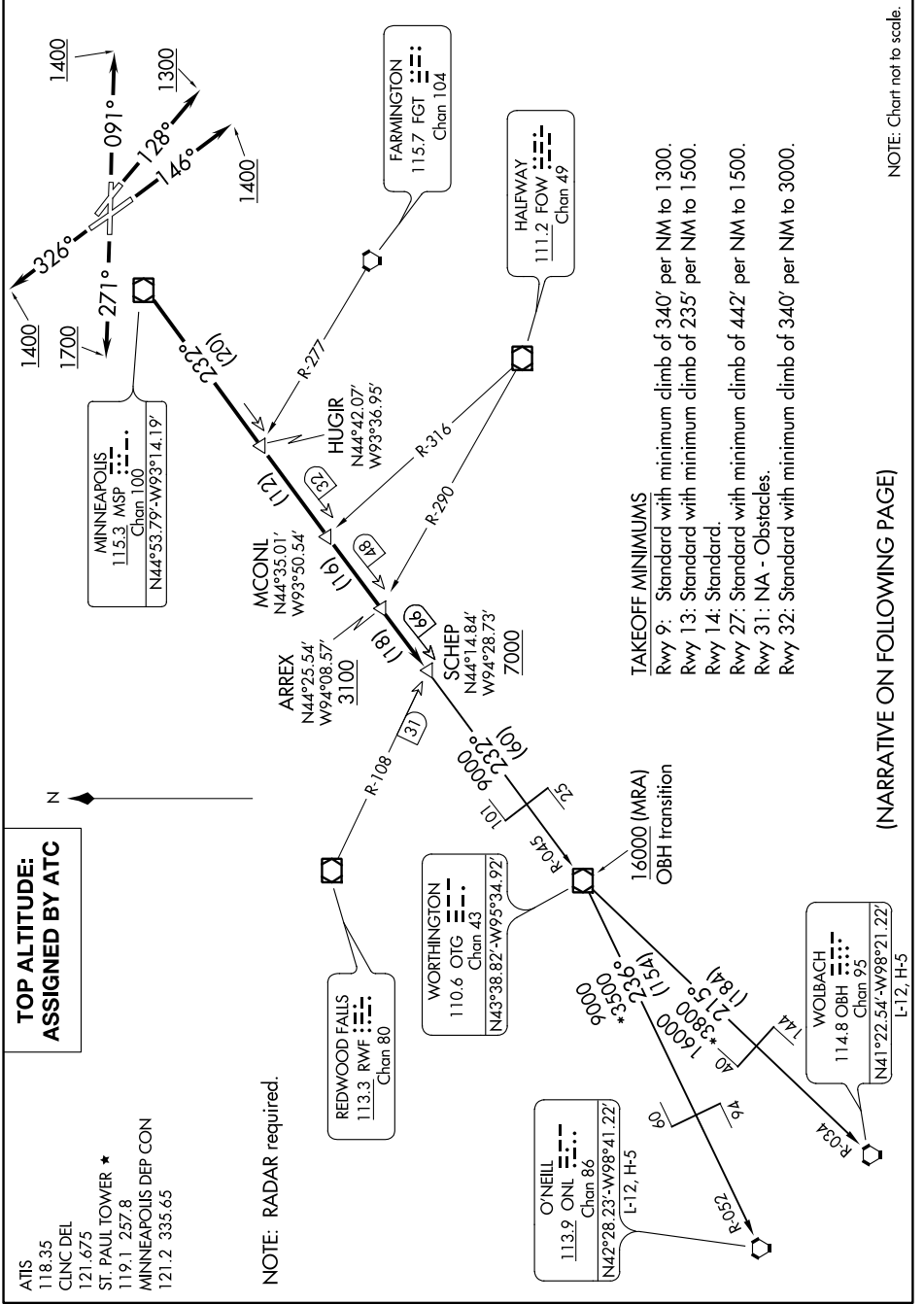


NC-1, 31 JAN 2019 to 28 FEB 2019



**TOP ALTITUDE:  
ASSIGNED BY ATC**

ATIS 118.35  
CLINC DEL 121.675  
ST. PAUL TOWER \* 119.1 257.8  
MINNEAPOLIS DEP CON 121.2 335.65

NOTE: RADAR required.

**TAKEOFF MINIMUMS**  
 Rwy 9: Standard with minimum climb of 340' per NM to 1300.  
 Rwy 13: Standard with minimum climb of 235' per NM to 1500.  
 Rwy 14: Standard.  
 Rwy 27: Standard with minimum climb of 442' per NM to 1500.  
 Rwy 31: NA - Obstacles.  
 Rwy 32: Standard with minimum climb of 340' per NM to 3000.

(NARRATIVE ON FOLLOWING PAGE)

NOTE: Chart not to scale.

NC-1, 31 JAN 2019 to 28 FEB 2019