

# ROCHESTER ONE DEPARTURE

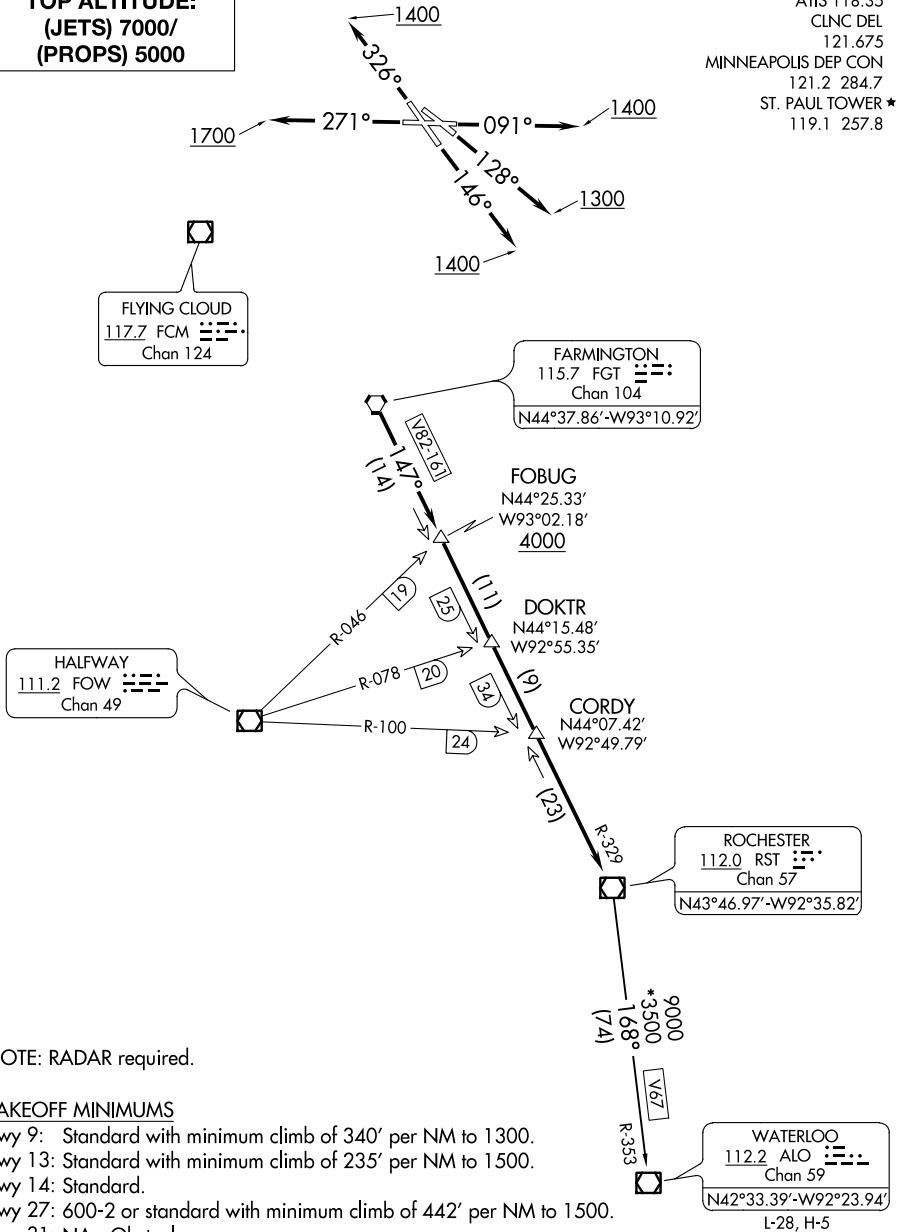
AL-263 (FAA)

ST PAUL DOWNTOWN HOLMAN FIELD (STP)

ST. PAUL, MINNESOTA

**TOP ALTITUDE:  
(JETS) 7000/  
(PROPS) 5000**

ATIS 118.35  
CLNC DEL  
121.675  
MINNEAPOLIS DEP CON  
121.2 284.7  
ST. PAUL TOWER \*  
119.1 257.8



NOTE: RADAR required.

### TAKEOFF MINIMUMS

- Rwy 9: Standard with minimum climb of 340' per NM to 1300.
- Rwy 13: Standard with minimum climb of 235' per NM to 1500.
- Rwy 14: Standard.
- Rwy 27: 600-2 or standard with minimum climb of 442' per NM to 1500.
- Rwy 31: NA - Obstacles.
- Rwy 32: Standard with minimum climb of 340' per NM to 3000.

(NARRATIVE ON FOLLOWING PAGE)

NOTE: Chart not to scale.

# ROCHESTER ONE DEPARTURE

(RST1.RST) 13SEP18

ST. PAUL, MINNESOTA

ST PAUL DOWNTOWN HOLMAN FIELD (STP)

NC-1, 31 JAN 2019 to 28 FEB 2019

NC-1, 31 JAN 2019 to 28 FEB 2019