

LOC/DME I-BAO 111.5 Chan 52	APP CRS 326°	Rwy Idg TDZE Apt Elev	6109 704 705
--	------------------------	-----------------------------	---

ILS or LOC RWY 32

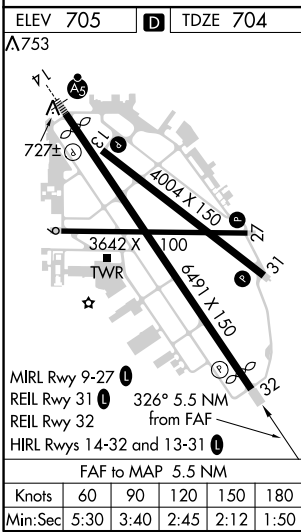
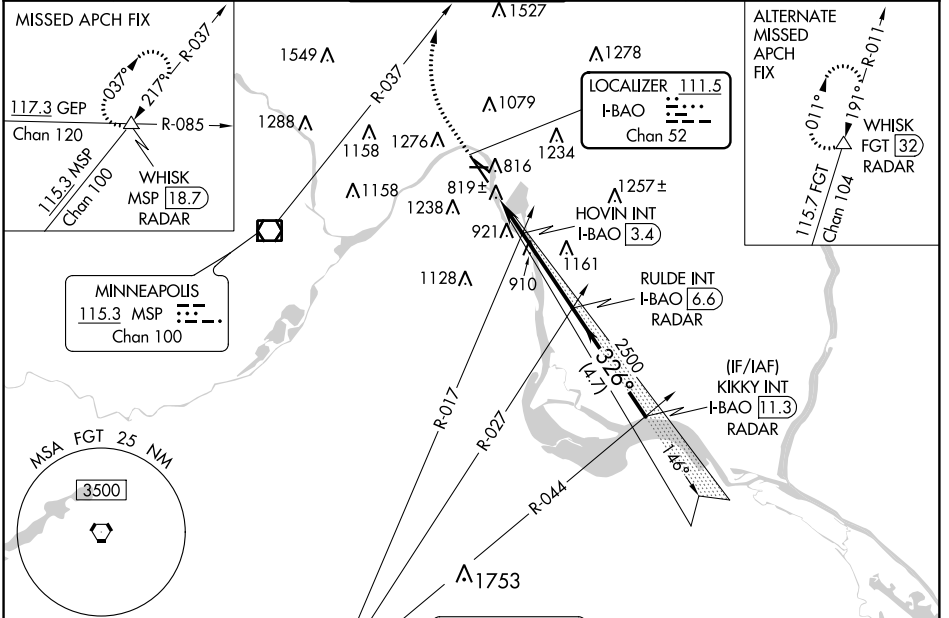
ST PAUL DOWNTOWN HOLMAN FIELD (STP)

DME or RADAR required. RADAR required for procedure entry.

MISSED APPROACH: Climb to 1300 then climbing right turn to 4000 on heading 010° and MSP R-037 to WHISK INT/MSP 18.7 DME/RADAR and hold.

⚠ Rwy 32 helicopter visibility reduction below RVR 4000 NA. Inoperative table does not apply to S-ILS 32 all Cats and S-LOC all Cats. HOVIN FIX MINIMUMS: Inoperative table does not apply to Cats A/B. For inoperative ALS, increase Cats C/D visibility to 1 1/2 SM.

ATIS 118.35	MINNEAPOLIS APP CON 121.2 335.65	ST. PAUL TOWER * 119.1 (CTAF) 0 257.8	GND CON 121.675	CLNC DEL 121.675	UNICOM 122.95
-----------------------	--	---	---------------------------	----------------------------	-------------------------



ELEV 705	TDZE 704	RULDE INT I-BAO 6.6 RADAR		KIKKY INT I-BAO 11.3 RADAR
1300	4000	MSP R-037	WHISK	
*LOC only		I-BAO 1.1	*I-BAO 2.6	HOVIN INT I-BAO 3.4
		2500	2500	2500
		1460*	1460	GS 3.00° TCH 40
		1.5 NM	0.8 NM	3.2 NM
		4.7 NM		
CATEGORY	A	B	C	D
S-ILS 32	1011/50 307 (400-1)			
S-LOC 32	1460/55 756 (800-1)	1460/60 756 (800-1 1/4)	1460-2	756 (800-2)
C CIRCLING	1580-1 1/4	875 (900-1 1/4)	1580-2 1/2 875 (900-2 1/2)	1580-2 3/4 875 (900-2 3/4)
HOVIN FIX MINIMUMS				
S-LOC 32	1220/55	516 (600-1)	1220-1 1/4	516 (600-1 1/4)
C CIRCLING	1580-1 1/4	875 (900-1 1/4)	1580-2 1/2 875 (900-2 1/2)	1580-2 3/4 875 (900-2 3/4)

NC-1, 31 JAN 2019 to 28 FEB 2019

NC-1, 31 JAN 2019 to 28 FEB 2019