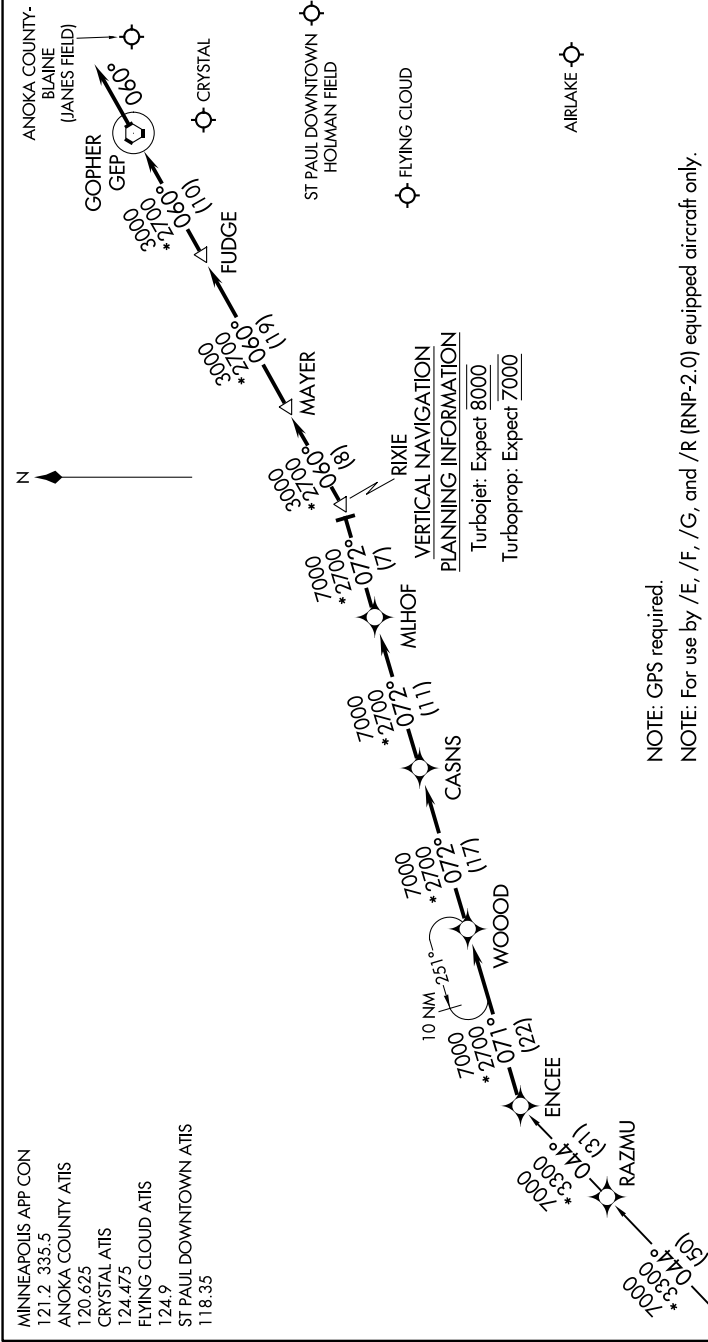


ENCEE TWO ARRIVAL (RNAV)

AL-263 (FAA)

MINNEAPOLIS-ST PAUL, MINNESOTA

NC-1, 31 JAN 2019 to 28 FEB 2019



ARRIVAL ROUTE DESCRIPTION

SIUX FALLS TRANSITION (FSD.ENCEE2)

From over ENCEE as depicted to RIXIE, thence as depicted to GEP VORTAC. Thence heading 060°, expect RADAR vectors to final approach course.

ENCEE TWO ARRIVAL (RNAV)

MINNEAPOLIS-ST PAUL, MINNESOTA

NOTE: Chart not to scale.

NC-1, 31 JAN 2019 to 28 FEB 2019