

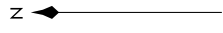
DARWIN SEVEN DEPARTURE

AL-263 (FAA)

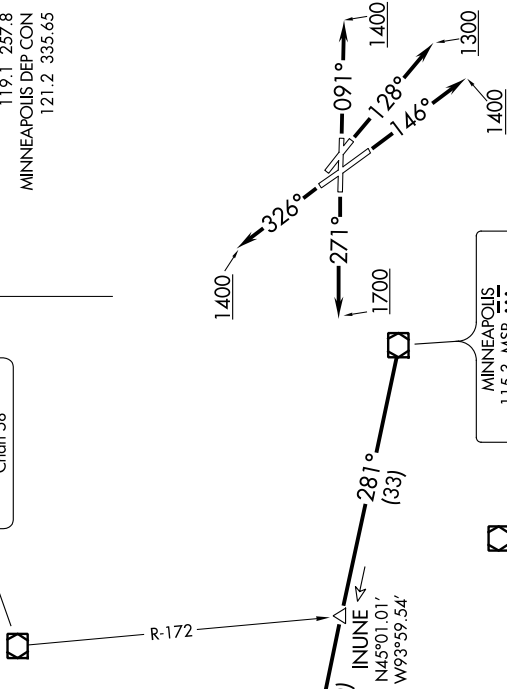
ST PAUL DOWNTOWN HOLMAN FIELD (STP)

ST. PAUL, MINNESOTA

ATIS
118.35
CINC DEL
121.675
ST. PAUL TOWER*
119.1 257.8
MINNEAPOLIS DEP CON
121.2 335.65



ST. CLOUD
112.1 STC
Chan 38



DARWIN
109.0 DWN
Chan 27
N45°05.25'-W94°27.23'

ABERDEEN
113.0 ABR
Chan 77
N45°25.04'-W98°22.12'
L-14, H-2

MINNEAPOLIS
115.3 MSP
Chan 100
N44°53.79'-W93°14.19'

FLYING CLOUD
117.7 FCM
Chan 124

TAKEOFF MINIMUMS

- Rwy 9: Standard with minimum climb of 340' per NM to 1300.
- Rwy 13: Standard with minimum climb of 235' per NM to 1500.
- Rwy 14: Standard.
- Rwy 27: 600-2 or standard with minimum climb of 442' per NM to 1500.
- Rwy 31: NA-obstacles.
- Rwy 32: Standard with minimum climb of 340' per NM to 3000.

NOTE: RADAR required.
NOTE: Chart not to scale.

(NARRATIVE ON FOLLOWING PAGE)

NC-1, 31 JAN 2019 to 28 FEB 2019

NC-1, 31 JAN 2019 to 28 FEB 2019

DARWIN SEVEN DEPARTURE