

CRRGO THREE DEPARTURE (RNAV)

**TOP ALTITUDE:
5000**

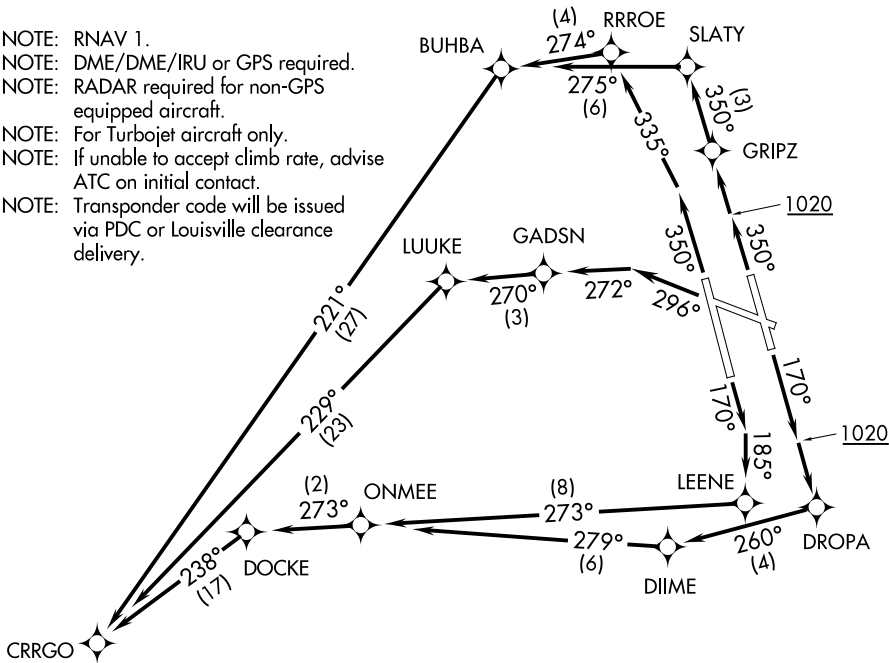
D-ATIS 118.725
CLNC DEL
126.1 275.8
CPDLC
GND CON
121.7 348.6
LOUISVILLE TOWER
124.2 257.8
LOUISVILLE DEP CON
132.075 327.0

TAKEOFF MINIMUMS:

Rwy 11: NA - ATC.

Rwys 17L/R, 29, 35L/R: Standard with
minimum climb of 500' per NM to 1020.

- NOTE: RNAV 1.
- NOTE: DME/DME/IRU or GPS required.
- NOTE: RADAR required for non-GPS equipped aircraft.
- NOTE: For Turbojet aircraft only.
- NOTE: If unable to accept climb rate, advise ATC on initial contact.
- NOTE: Transponder code will be issued via PDC or Louisville clearance delivery.



NOTE: Chart not to scale.

DEPARTURE ROUTE DESCRIPTION

TAKEOFF RUNWAY 17L: Climb heading 170° to 1020, then direct DROPA, then on depicted route to CRRGO, thence....

TAKEOFF RUNWAY 17R: Climb heading 170° to intercept course 185° to LEENE, then on depicted route to CRRGO, thence....

TAKEOFF RUNWAY 29: Climb heading 296° to intercept course 272° to GADSN, then on depicted route to CRRGO, thence....

TAKEOFF RUNWAY 35L: Climb heading 350° to intercept course 335° to RRROE, then on depicted route to CRRGO, thence....

TAKEOFF RUNWAY 35R: Climb heading 350° to 1020, then direct GRIPZ, then on depicted route to CRRGO, thence....

....maintain 5000. Expect clearance to filed altitude 10 minutes after departure.

SE-1, 31 JAN 2019 to 28 FEB 2019

SE-1, 31 JAN 2019 to 28 FEB 2019