

# TRTON TWO DEPARTURE (RNAV)

AL-237 (FAA)

LOS ANGELES INTL (LAX)  
LOS ANGELES, CALIFORNIA

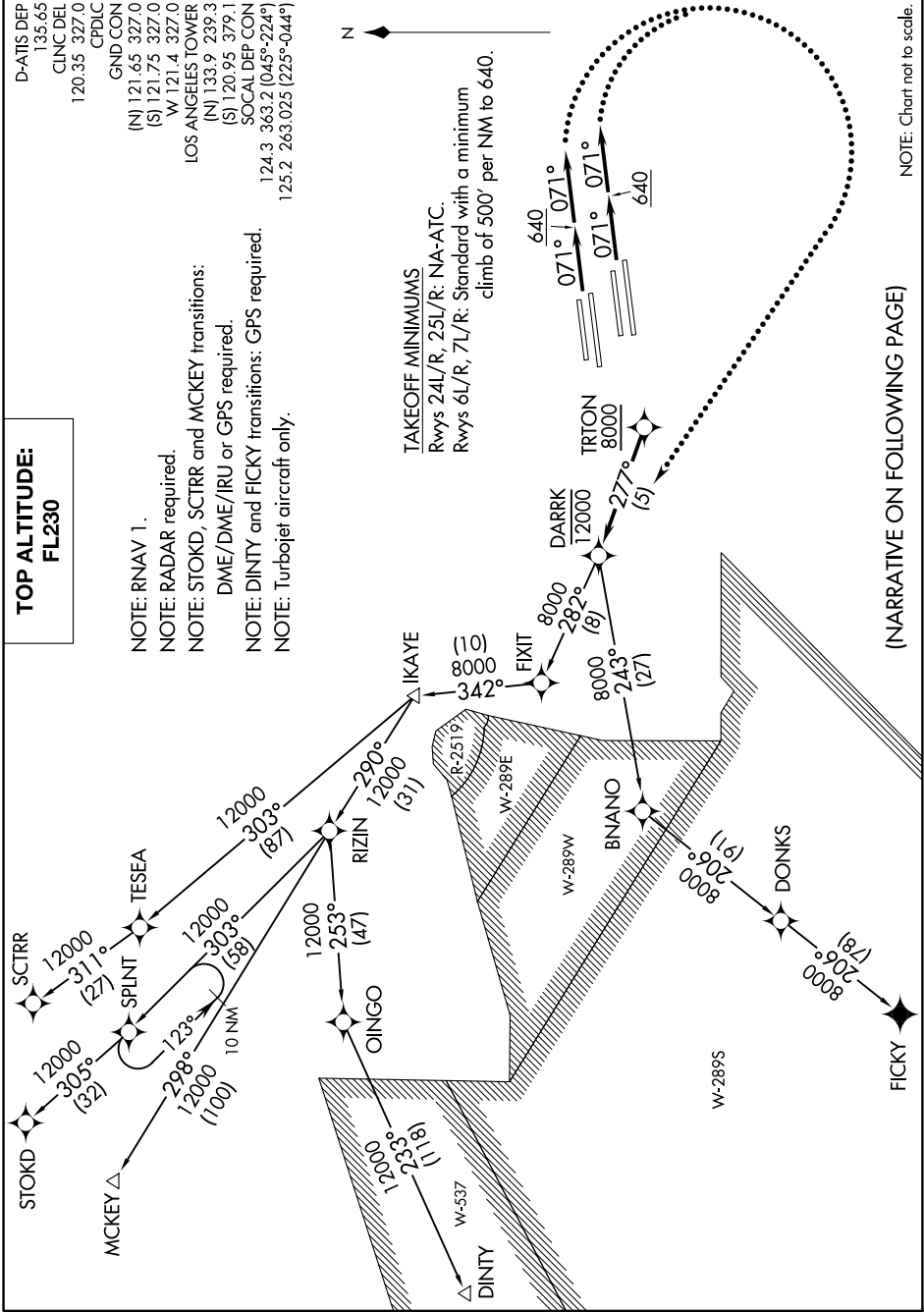
SW-3, 31 JAN 2019 to 28 FEB 2019

**TOP ALTITUDE:  
FL230**

D-AIS DEP 135.65  
 CLINC DEL 120.35 327.0  
 CPDLC  
 GND/CON (N) 121.65 327.0  
 (S) 121.75 327.0  
 W 121.4 327.0  
 LOS ANGELES TOWER (N) 133.9 239.3  
 (S) 120.95 379.1  
 SOCIAL DEP CON 124.3 363.2 (045°-224°)  
 125.2 263.025 (225°-044°)

NOTE: RNAV 1.  
 NOTE: RADAR required.  
 NOTE: STOKD, SCTRR and MCKEY transitions:  
 DME/DME/IRU or GPS required.  
 NOTE: DINTY and FICKY transitions: GPS required.  
 NOTE: Turbojet aircraft only.

**TAKEOFF MINIMUMS**  
 Rwy's 24L/R, 25L/R: NA-ATC.  
 Rwy's 6L/R, 7L/R: Standard with a minimum  
 climb of 500' per NM to 640.



NOTE: Chart not to scale.

(NARRATIVE ON FOLLOWING PAGE)

SW-3, 31 JAN 2019 to 28 FEB 2019

# TRTON TWO DEPARTURE (RNAV)

LOS ANGELES, CALIFORNIA  
LOS ANGELES INTL (LAX)