

# SUMMR ONE DEPARTURE (RNAV)

AL-237 (FAA)

LOS ANGELES INTL (LAX)  
LOS ANGELES, CALIFORNIA

SW-3, 31 JAN 2019 to 28 FEB 2019

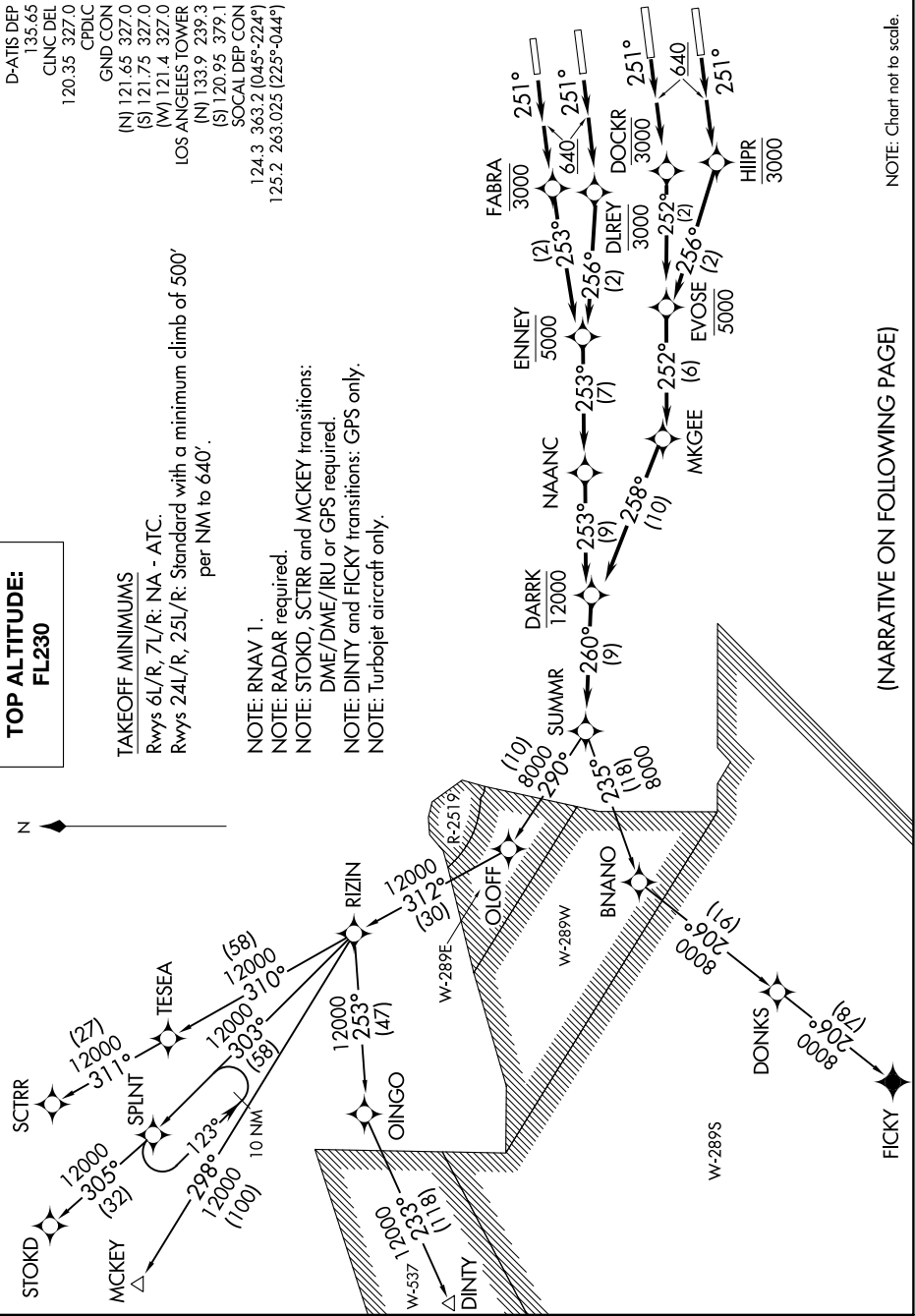
**TOP ALTITUDE:**  
**FL230**



D-ATIS DEP 135.65  
CLNC DEL 120.35 327.0  
CPDLC 120.35 327.0  
GND CON (N) 121.65 327.0  
(S) 121.75 327.0  
(W) 121.4 327.0  
LOS ANGELES TOWER (N) 133.9 239.3  
(S) 120.95 379.1  
SOCAL DEP CON 124.3 363.2 (045°-224°)  
125.2 263.025 (225°-044°)

**TAKEOFF MINIMUMS**  
Rwys 6L/R, 7L/R: NA - ATC.  
Rwys 24L/R, 25L/R: Standard with a minimum climb of 500' per NM to 640'.

NOTE: RNAV 1.  
NOTE: RADAR required.  
NOTE: STOKD, SCTRR and MCKEY transitions:  
DME/DME/IRU or GPS required.  
NOTE: DINTY and FICKY transitions: GPS only.  
NOTE: Turbojet aircraft only.



NOTE: Chart not to scale.

(NARRATIVE ON FOLLOWING PAGE)

# SUMMR ONE DEPARTURE (RNAV)

LOS ANGELES, CALIFORNIA  
LOS ANGELES INTL (LAX)

SW-3, 31 JAN 2019 to 28 FEB 2019