

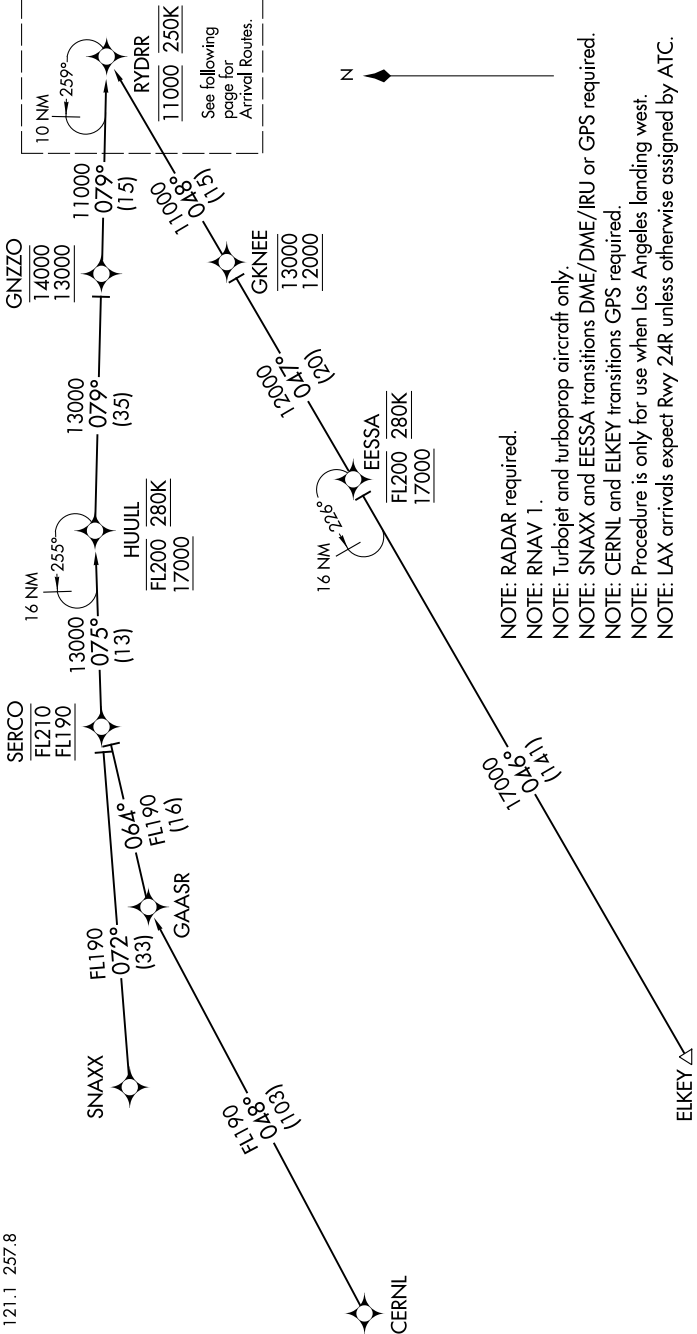
RYDRR TWO ARRIVAL (RNAV) Transition Routes

LOS ANGELES, CALIFORNIA

SW-3, 31 JAN 2019 to 28 FEB 2019

SOCAL APP CON  
 124.5 235.975  
 LOS ANGELES INTL D-ATIS ARR  
 133.8  
 JACK NORTHROP FIELD/HAWTHORNE MUNI ATIS  
 118.4  
 LOS ANGELES TOWER  
 (N) 133.9, 239.3  
 (S) 120.95, 379.1  
 HAWTHORNE TOWER ★  
 121.1 257.8

CERNL TRANSITION (CERNL.RYDRR2)  
EESSA TRANSITION (EESSA.RYDRR2)  
ELKEY TRANSITION (ELKEY.RYDRR2)  
SNAXX TRANSITION (SNAXX.RYDRR2)



NOTE: RADAR required.  
 NOTE: RNAV 1.  
 NOTE: Turbojet and turboprop aircraft only.  
 NOTE: SNAXX and EESSA transitions DME/DME/IRU or GPS required.  
 NOTE: CERNL and ELKEY transitions GPS required.  
 NOTE: Procedure is only for use when Los Angeles landing west.  
 NOTE: LAX arrivals expect Rwy 24R unless otherwise assigned by ATC.

(CONTINUED ON FOLLOWING PAGE)

NOTE: Chart not to scale.

RYDRR TWO ARRIVAL (RNAV) Transition Routes

LOS ANGELES, CALIFORNIA

SW-3, 31 JAN 2019 to 28 FEB 2019