

|  |                        |   |             |
|--|------------------------|---|-------------|
| WAAS<br>CH <b>61207</b><br><b>W06B</b> | APP CRS<br><b>071°</b> | Rwy Idg<br>TDZE <b>116</b><br>Apt Elev <b>128</b> | <b>9748</b> |
|--|------------------------|---|-------------|

# RNAV (GPS) Y RWY 6R

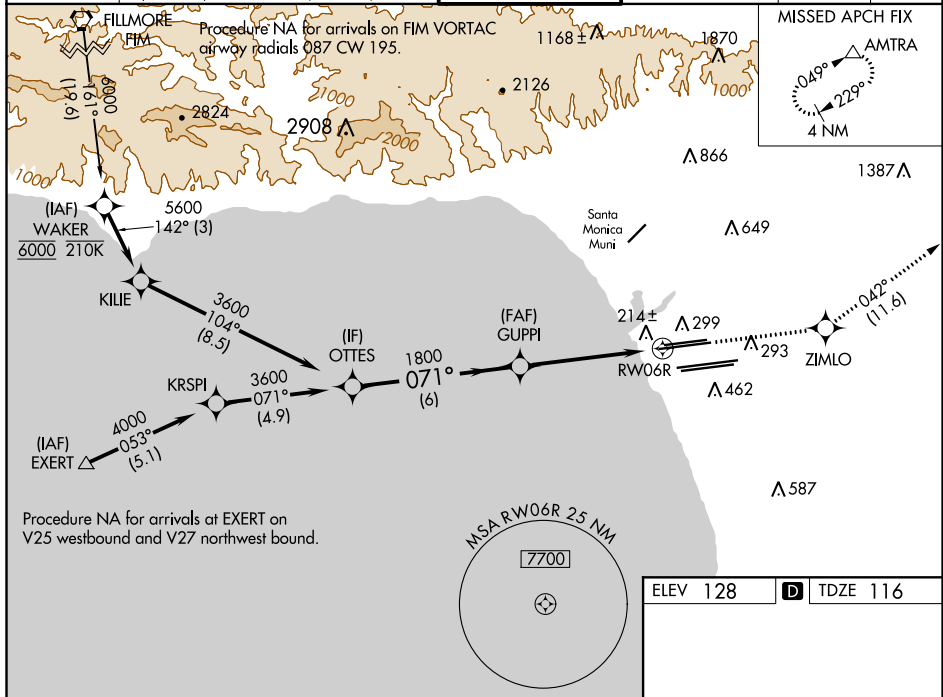
LOS ANGELES INTL (LAX)

▼ For uncompensated Baro-VNAV systems, LNAV/VNAV NA below 5°C (41°F) or above 54°C (130°F). DME/DME RNP-0.3 NA. For inop ALS, increase LNAV/VNAV all Cats visibility to RVR 4500, LNAV Cat C and D visibility to RVR 5500. Simultaneous approach authorized. LNAV procedure NA during simultaneous operations. Use of FD or AP providing RNAV track guidance required during simultaneous operations. # RVR 1800 authorized with use of FD or AP or HUD to DA.



MISSED APPROACH:  
Climb to 3000 direct ZIMLO and track 042° to AMTRA and hold.

|   |  |  |  |   |                                 |       |
|---|--|--|--|---|---------------------------------|-------|
| D-ATIS<br>ARR <b>133.8</b><br>DEP <b>135.65</b> | SOCAL APP CON<br><b>124.3 363.2</b><br>(APCH FM WEST)<br><b>124.5 235.975</b><br>(225°-044°) | <b>124.9 269.0</b><br>(090°-224°)<br><b>128.5 360.7</b><br>(045°-089°) | LOS ANGELES TOWER<br><b>N 133.9 239.3</b><br><b>S 120.95 379.1</b> | GND CON<br><b>N 121.65 327.0</b><br><b>S 121.75 327.0</b><br><b>W 121.4 327.0</b> | CLNC DEL<br><b>120.35 327.0</b> | CPDLC |
|---|--|--|--|---|---------------------------------|-------|



SW-3, 31 JAN 2019 to 28 FEB 2019

SW-3, 31 JAN 2019 to 28 FEB 2019

|  |        |             |             |             |       |
|--|--------|-------------|-------------|-------------|-------|
| VGSi and RNAV glidepath not coincident (VGSi Angle 3.00/TCH 69). |        | 3000        | ZIMLO       | tr 042°     | AMTRA |
|  |        |             |             |             |       |
| GP 3.00°<br>TCH 53   | 6 NM   | 4.2 NM      | 0.9 NM      |             |       |
| CATEGORY   | A      | B           | C           | D           |       |
| LPV DA#  |        | 316/24      | 200 (200-½) |             |       |
| LNAV/VNAV DA   |        | 398/24      | 282 (300-½) |             |       |
| LNAV MDA   | 480/24 | 364 (400-½) | 480/35      | 364 (400-⅝) |       |

|          |                   |
|----------|-------------------|
| ELEV 128 | <b>D</b> TDZE 116 |
|----------|-------------------|

TDZ/CL Rwws 6R, 7L, 24R, and 25L  
HIRL all Rwws