


WAAS CH <b>49007</b> <b>W25B</b>	APP CRS <b>251°</b>	Rwy Idg <b>11134</b> TDZE <b>104</b> Apt Elev <b>128</b>
--	------------------------	--

# RNAV (GPS) Y RWY 25R

LOS ANGELES INTL (LAX)

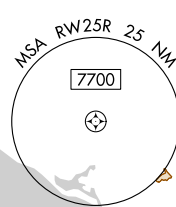
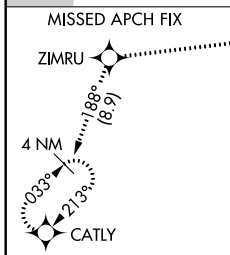
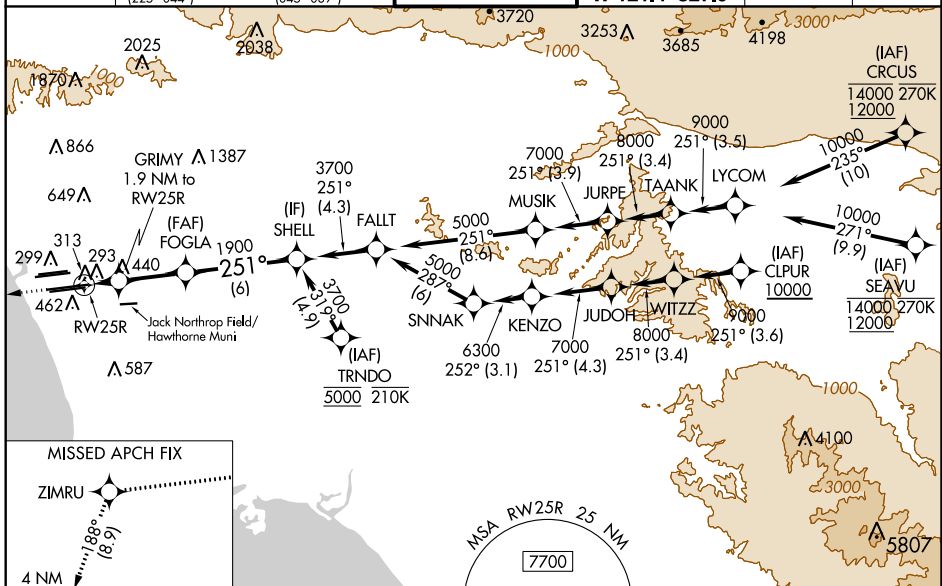
For uncompensated Baro-VNAV systems, LNAV/VNAV NA below 5°C (41°F) or above 54°C (130°F). DME/DME RNP-0.3 NA. Simultaneous approach authorized. Simultaneous approach authorized with HHR. LNAV procedure NA during simultaneous operations. Use of FD or AP providing RNAV track guidance required during simultaneous operations. # RVR 1800 authorized with use of FD or AP or HUD to DA.

**MALSR**

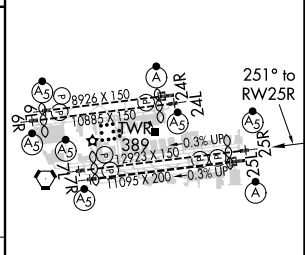
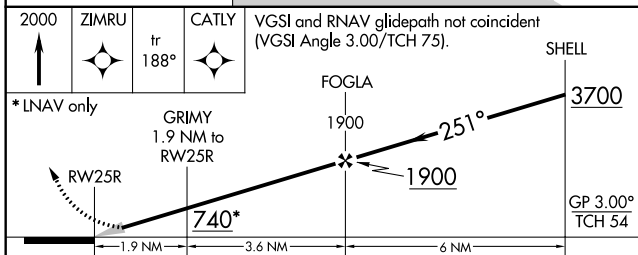


**MISSED APPROACH:**  
Climb to 2000 direct ZIMRU and track 188° to CATLY and hold.

D-ATIS ARR <b>133.8</b> DEP <b>135.65</b>	SOCAL APP CON <b>124.3 363.2</b> (APCH FM WEST) <b>124.5 235.975</b> (225°-044°)	<b>124.9 269.0</b> (090°-224°) <b>128.5 360.7</b> (045°-089°)	<b>LOS ANGELES TOWER</b> <b>N 133.9 239.3</b> <b>S 120.95 379.1</b>	<b>GND CON</b> <b>N 121.65 327.0</b> <b>S 121.75 327.0</b> <b>W 121.4 327.0</b>	<b>CLNC DEL</b> <b>120.35</b> <b>327.0</b>	CPDLC
---	--	--	---	--	--	-------



ELEV 128	<b>D</b> TDZE 104
----------	-------------------



CATEGORY	A	B	C	D
LPV DA#		304/24	200 (200-1/2)	
LNAV/VNAV DA		578/60	474 (500-1/4)	
LNAV MDA	640/24	536 (600-1/2)	640/55	536 (600-1)

TDZ/CL Rwws 6R, 7L, 24R, and 25L  
HIRL all Rwws

SW-3, 31 JAN 2019 to 28 FEB 2019

SW-3, 31 JAN 2019 to 28 FEB 2019