

# RNAV (RNP) Z RWY 24R

LOS ANGELES INTL (LAX)

APP CRS	Rwy Idg	<b>8925</b>
<b>251°</b>	TDZE	<b>122</b>
	Apt Elev	<b>128</b>

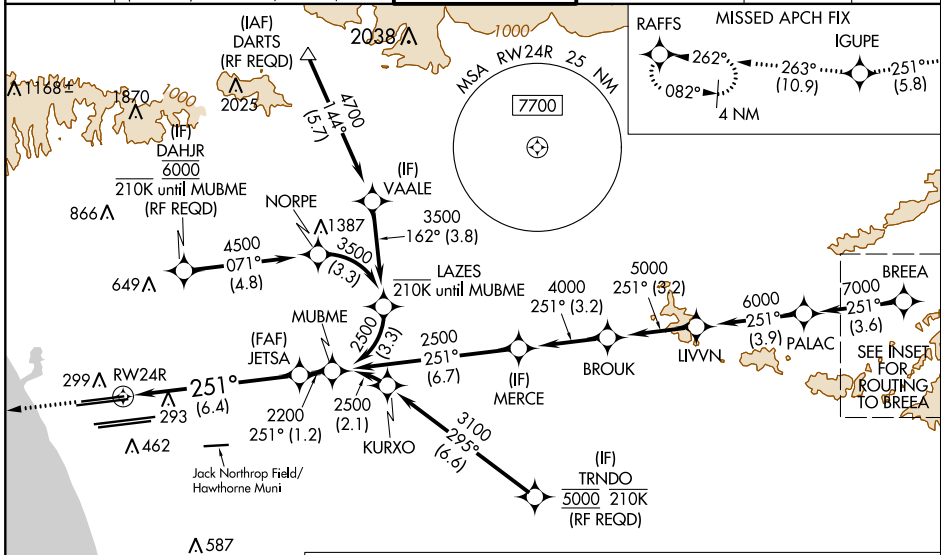
For uncompensated Baro-VNAV systems, procedure NA below 5°C (41°F) or above 54°C (130°F). GPS required. For inop ALS, increase RNP 0.15 all Cats visibility to RVR 6000 and RNP 0.30 all Cats visibility to 1 1/2 SM. Simultaneous approach authorized. Simultaneous approach authorized with HHR.

ALSF-2



MISSED APPROACH: Climb to 2000 on track 251° to IGUPE and on track 263° to RAFFS and hold.

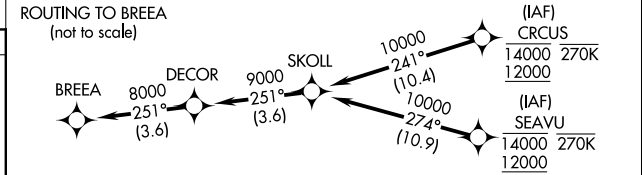
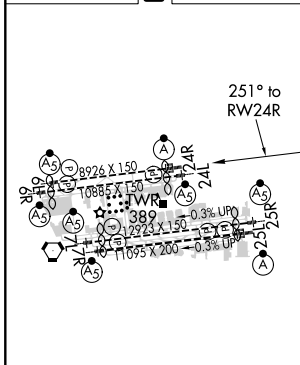
D-ATIS	SOCAL APP CON		LOS ANGELES TOWER	GND CON		CLNC DEL	CPDLC
ARR <b>133.8</b>	<b>124.3</b>	<b>363.2</b>	<b>124.9</b>	<b>269.0</b>	<b>N 121.65</b>	<b>327.0</b>	
DEF <b>135.65</b>	(APCH FM WEST)		<b>N 133.9</b>	<b>239.3</b>	<b>S 121.75</b>	<b>327.0</b>	
			<b>S 120.95</b>	<b>379.1</b>	<b>W 121.4</b>	<b>327.0</b>	
	(225°-044°)	(090°-224°)				<b>120.35</b>	
		(045°-089°)				<b>327.0</b>	



SW-3, 31 JAN 2019 to 28 FEB 2019

SW-3, 31 JAN 2019 to 28 FEB 2019

ELEV <b>128</b>	<b>D</b>	TDZE <b>122</b>
-----------------	----------	-----------------



2000	IGUPE	tr 251°	RAFFS	See planview for multiple IF locations.															
			tr 263°																
VGSi and RNAV glidepath not coincident (VGSi Angle 3.00/TCH 73).																			
<table border="1"> <thead> <tr> <th>CATEGORY</th> <th>A</th> <th>B</th> <th>C</th> <th>D</th> </tr> </thead> <tbody> <tr> <td>RNP 0.15 DA</td> <td></td> <td>484/40</td> <td>362 (400-34)</td> <td></td> </tr> <tr> <td>RNP 0.30 DA</td> <td></td> <td>586/60</td> <td>464 (500-1¼)</td> <td></td> </tr> </tbody> </table>					CATEGORY	A	B	C	D	RNP 0.15 DA		484/40	362 (400-34)		RNP 0.30 DA		586/60	464 (500-1¼)	
CATEGORY	A	B	C	D															
RNP 0.15 DA		484/40	362 (400-34)																
RNP 0.30 DA		586/60	464 (500-1¼)																

TDZ/CL Rwy's 6R, 7L, 24R, and 25L  
HIRL all Rwy's

**AUTHORIZATION REQUIRED**