


RNAV (RNP) Z RWY 24L

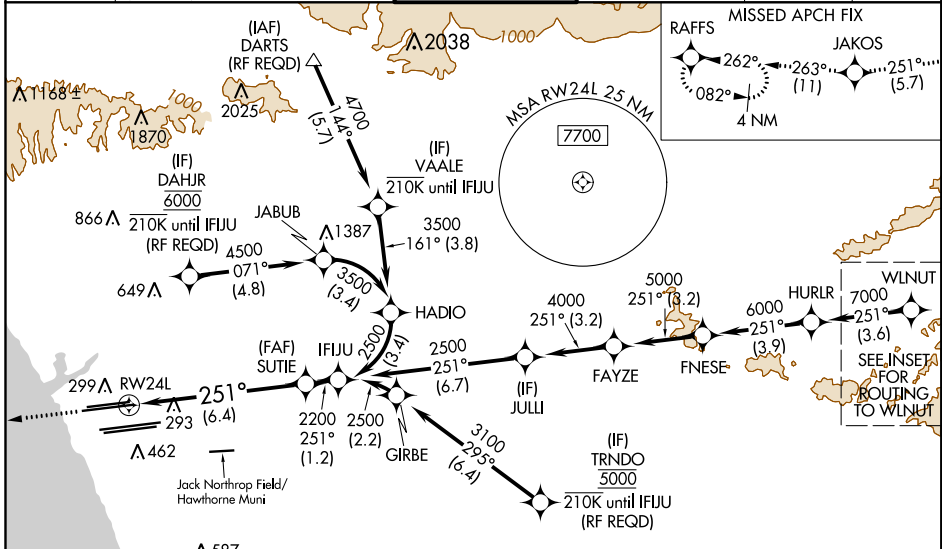
LOS ANGELES INTL (LAX)

APP CRS	Rwy Idg	9483
251°	TDZE	123
	Apt Elev	128

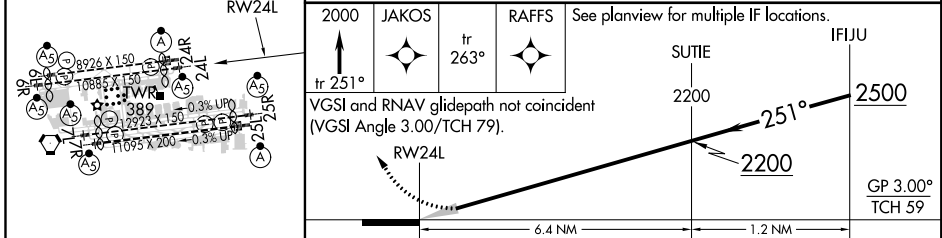
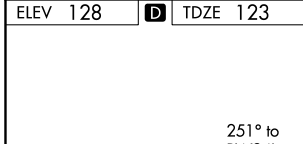
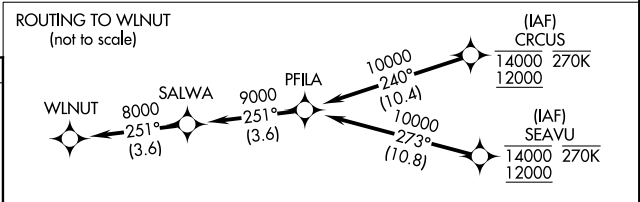
▼ For uncompensated Baro-VNAV systems, procedure NA below 5°C (41°F) or above 54°C (130°F). Simultaneous approach authorized. Simultaneous approach authorized with KHHR. GPS required. For inop ALS, increase RNP 0.15 all Cats visibility to 1½ SM.

MALSR  MISSED APPROACH: Climb to 2000 on track 251° to JAKOS and track 263° to RAFFS and hold.

D-ATIS	SOCAL APP CON	LOS ANGELES TOWER	GND CON	CLNC DEL	CPDLC
ARR 133.8	124.3 363.2 (APCH FM WEST)	124.9 269.0 (090°-224°)	N 121.65 327.0 S 121.75 327.0 W 121.4 327.0	120.35 327.0	
DEP 135.65	124.5 235.975 (225°-044°)	N 133.9 239.3 S 120.95 379.1 (045°-089°)			



ELEV	128	D	TDZE	123
------	------------	----------	------	------------



CATEGORY	A	B	C	D
RNP 0.15 DA		545/50	422 (500-1)	
RNP 0.30 DA		592/60	469 (500-1½)	

AUTHORIZATION REQUIRED

SW-3, 31 JAN 2019 to 28 FEB 2019

SW-3, 31 JAN 2019 to 28 FEB 2019