

# MUELR FOUR DEPARTURE (RNAV)

AL-237 (FAA)

LOS ANGELES INTL (LAX)  
LOS ANGELES, CALIFORNIA

SW-3, 31 JAN 2019 to 28 FEB 2019

**TOP ALTITUDE:**  
**10000**

SAN MARCUS

RZS

10000  
288°  
(24)

SCHOR

10000  
288°  
(9)

KWANG

10000  
273°  
(16)

WGGNR

10000  
289°  
(11)

IKAYE

10000  
342°  
(10)

FIXIT

10000 290K

LOS ANGELES INTL (LAX)  
LOS ANGELES, CALIFORNIA

### TAKEOFF MINIMUMS

Rwys 6L/R, 7L/R: NA-ATC.

Rwys 24L/R, 25L/R: Standard with minimum climb of 500' per NM to 640.

D-ATIS DEP 135.65  
CLNC DEL 120.35 327.0  
CPDLC  
GND CON (N) 121.65 327.0 (S) 121.75 327.0 (W) 121.4 327.0  
LOS ANGELES TOWER (N) 133.9 239.3 (S) 120.95 379.1  
SOCAL DEP CON 124.3 363.2 (045°-224°) 125.2 263.023 (225°-044°)

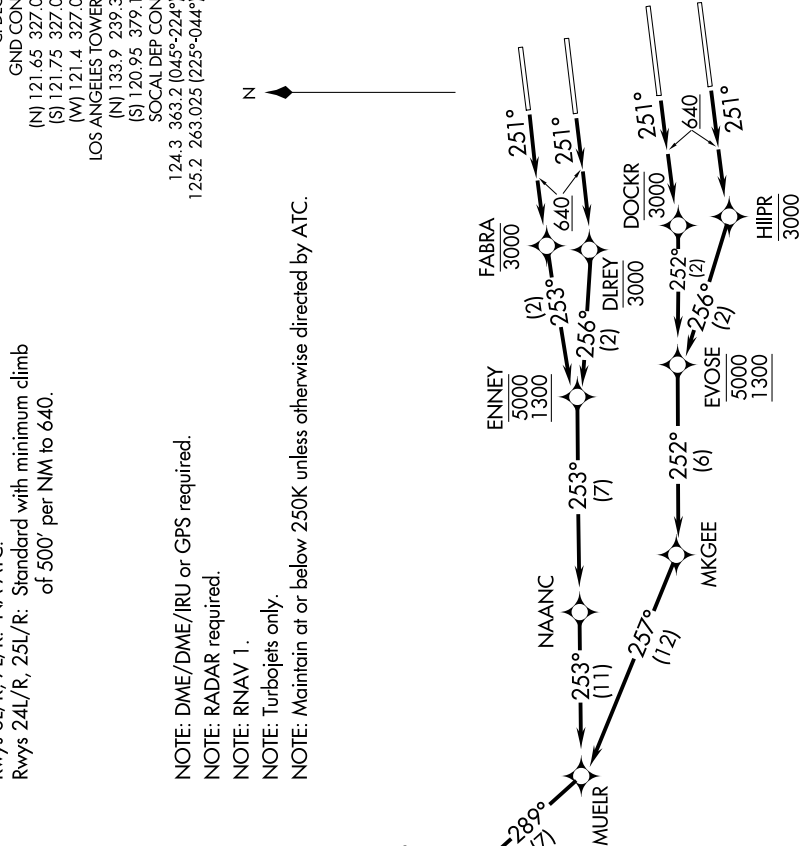
NOTE: DME/DME/IRU or GPS required.

NOTE: RADAR required.

NOTE: RNAV 1.

NOTE: Turbojets only.

NOTE: Maintain at or below 250K unless otherwise directed by ATC.



(NARRATIVE ON FOLLOWING PAGE)

NOTE: Chart not to scale.

SW-3, 31 JAN 2019 to 28 FEB 2019

# MUELR FOUR DEPARTURE (RNAV)

LOS ANGELES, CALIFORNIA  
LOS ANGELES INTL (LAX)