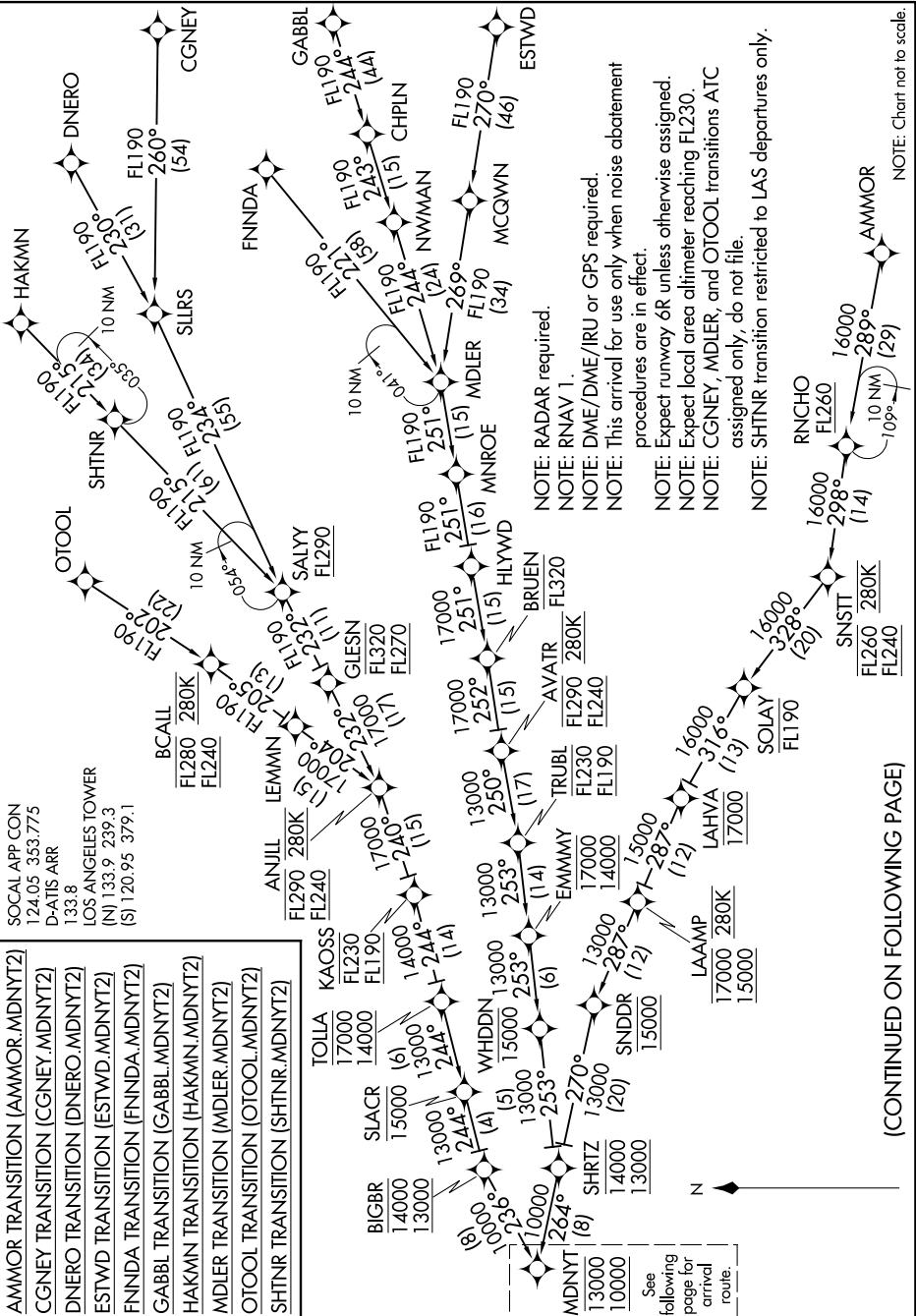


MDNYT TWO ARRIVAL (RNAV) Transition Routes

SW-3, 31 JAN 2019 to 28 FEB 2019

- AMMOR TRANSITION (AMMOR.MDNYT2)
- CGNEY TRANSITION (CGNEY.MDNYT2)
- DNERO TRANSITION (DNERO.MDNYT2)
- ESTWD TRANSITION (ESTWD.MDNYT2)
- FNINDA TRANSITION (FNINDA.MDNYT2)
- GABBL TRANSITION (GABBL.MDNYT2)
- HAKMN TRANSITION (HAKMN.MDNYT2)
- MDLER TRANSITION (MDLER.MDNYT2)
- OTOOL TRANSITION (OTOOL.MDNYT2)
- SHTNR TRANSITION (SHTNR.MDNYT2)

SOCAL APP CON
124.05 353.775
D-ATIS ARR
133.8
LOS ANGELES TOWER
(N) 133.9 239.3
(S) 120.95 379.1



- NOTE: RADAR required.
- NOTE: RNAV 1.
- NOTE: DME/DME/IRU or GPS required.
- NOTE: This arrival for use only when noise abatement procedures are in effect.
- NOTE: Expect runway 6R unless otherwise assigned.
- NOTE: Expect local area altimeter reaching FL230.
- NOTE: CGNEY, MDLER, and OTOOL transitions ATC assigned only, do not file.
- NOTE: SHTNR transition restricted to LAS departures only.

(CONTINUED ON FOLLOWING PAGE)

NOTE: Chart not to scale.

MDNYT TWO ARRIVAL (RNAV) Transition Routes

SW-3, 31 JAN 2019 to 28 FEB 2019