

LAXX ONE DEPARTURE

AL-237 (FAA)

LOS ANGELES INTL (LAX)
LOS ANGELES, CALIFORNIA

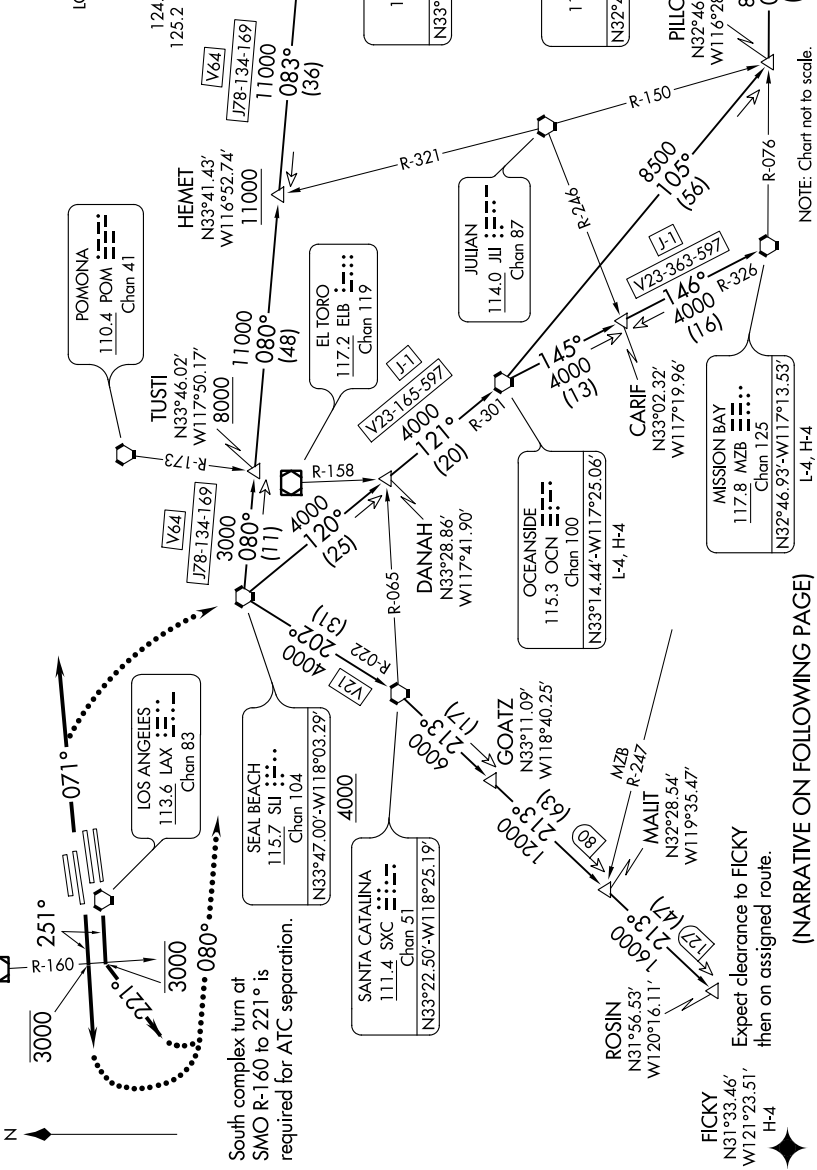
SW-3, 'E, 31 JAN 2019 to 28 FEB 2019

**TOP ALTITUDE:
ASSIGNED BY ATC**

TAKEOFF MINIMUMS
Rwy 6L/R, 7L/R, 24L/R, 25L/R: Standard.

NOTE: This departure is for turbojet aircraft only.
NOTE: RADAR and DME required.

D-ATIS DEP 135.65
CLNC DEL 120.35 327.0
CPDLC
GND CON
(N) 121.65 327.0
(S) 121.75 327.0
(W) 121.4 327.0
LOS ANGELES TOWER
(N) 133.9 239.3
(S) 120.95 379.1
SOCAL DEP CON
124.3 363.2 (045°-224°)
125.2 263.025 (225°-044°)



(NARRATIVE ON FOLLOWING PAGE)

SW-3, 31 JAN 2019 to 28 FEB 2019