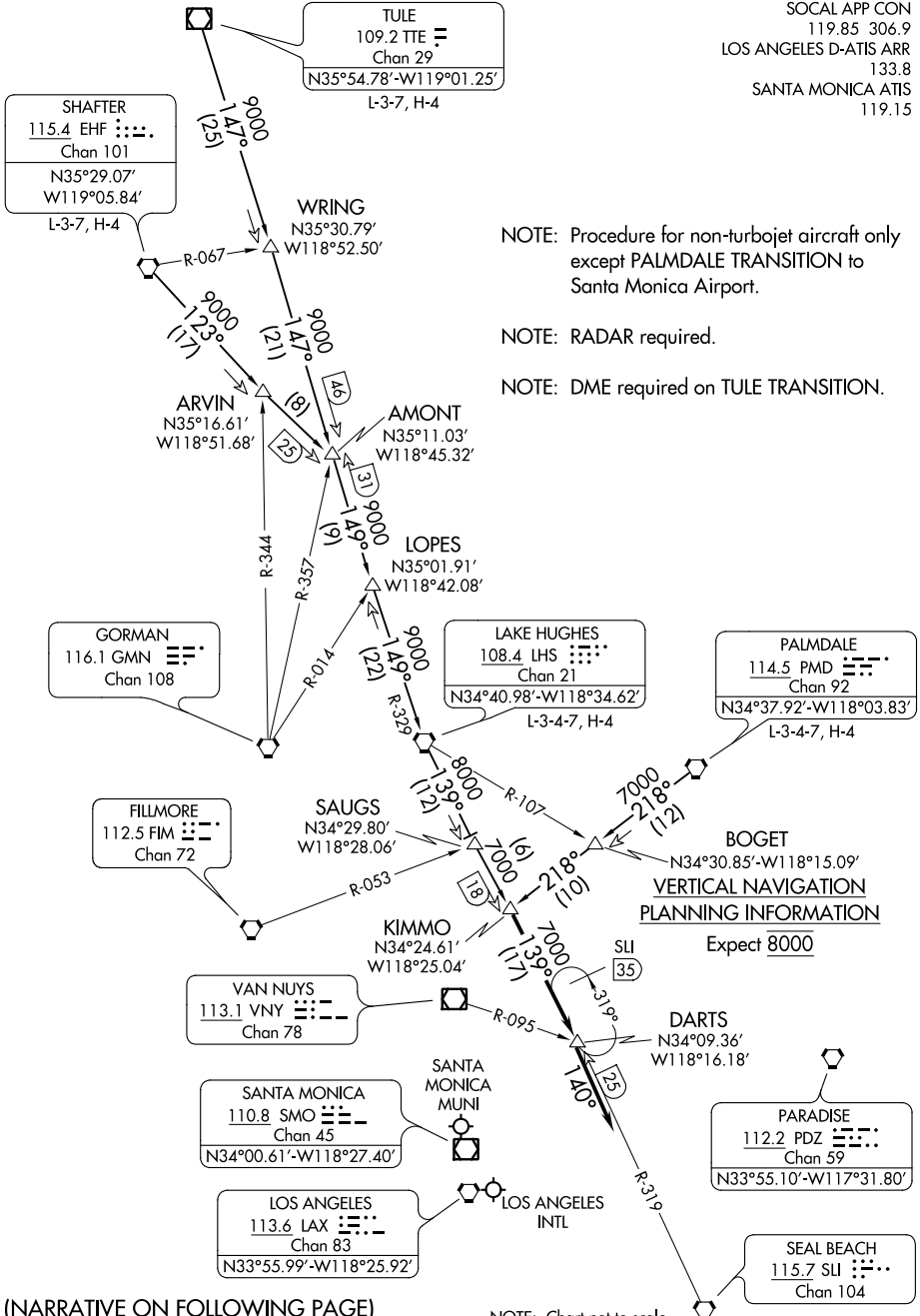


# KIMMO THREE ARRIVAL

AL-237 (FAA)

LOS ANGELES, CALIFORNIA



NOTE: Procedure for non-turbojet aircraft only except PALMDALE TRANSITION to Santa Monica Airport.

NOTE: RADAR required.

NOTE: DME required on TULE TRANSITION.

(NARRATIVE ON FOLLOWING PAGE)

NOTE: Chart not to scale.

SW-3, 31 JAN 2019 to 28 FEB 2019

SW-3, 31 JAN 2019 to 28 FEB 2019

# KIMMO THREE ARRIVAL

LOS ANGELES, CALIFORNIA