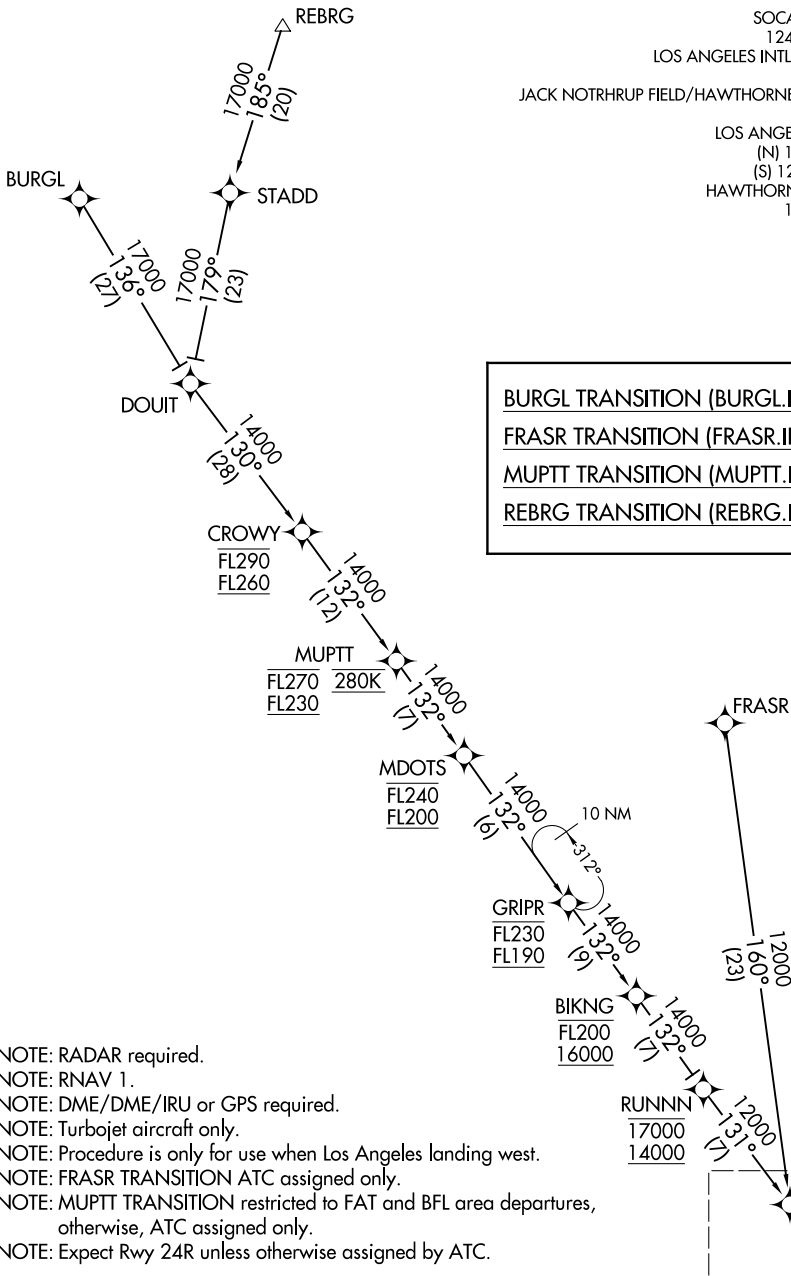


SOCAL APP CON  
 124.5 235.975  
 LOS ANGELES INTL D-ATIS ARR  
 133.8  
 JACK NOTHRUP FIELD/HAWTHORNE MUNI ATIS  
 118.4  
 LOS ANGELES TOWER  
 (N) 133.9 239.3  
 (S) 120.95 379.1  
 HAWTHORNE TOWER ★  
 121.1 257.8



BURGL TRANSITION (BURGL.IRNMN2)  
FRASR TRANSITION (FRASR.IRNMN2)  
MUPTT TRANSITION (MUPTT.IRNMN2)  
REBRG TRANSITION (REBRG.IRNMN2)

SW-3, 31 JAN 2019 to 28 FEB 2019

SW-3, 31 JAN 2019 to 28 FEB 2019

- NOTE: RADAR required.
- NOTE: RNAV 1.
- NOTE: DME/DME/IRU or GPS required.
- NOTE: Turbojet aircraft only.
- NOTE: Procedure is only for use when Los Angeles landing west.
- NOTE: FRASR TRANSITION ATC assigned only.
- NOTE: MUPTT TRANSITION restricted to FAT and BFL area departures, otherwise, ATC assigned only.
- NOTE: Expect Rwy 24R unless otherwise assigned by ATC.

NOTE: Chart not to scale.

(CONTINUED ON FOLLOWING PAGE)

See following page  
 for arrival route.