

LOC/DME I-HQB 111.7 Chan 54	APP CRS 251°	Rwy Idg TDZE Apt Elev	24L 9483 123 128	24R 8925 122 128
---	------------------------	-----------------------------	--	--

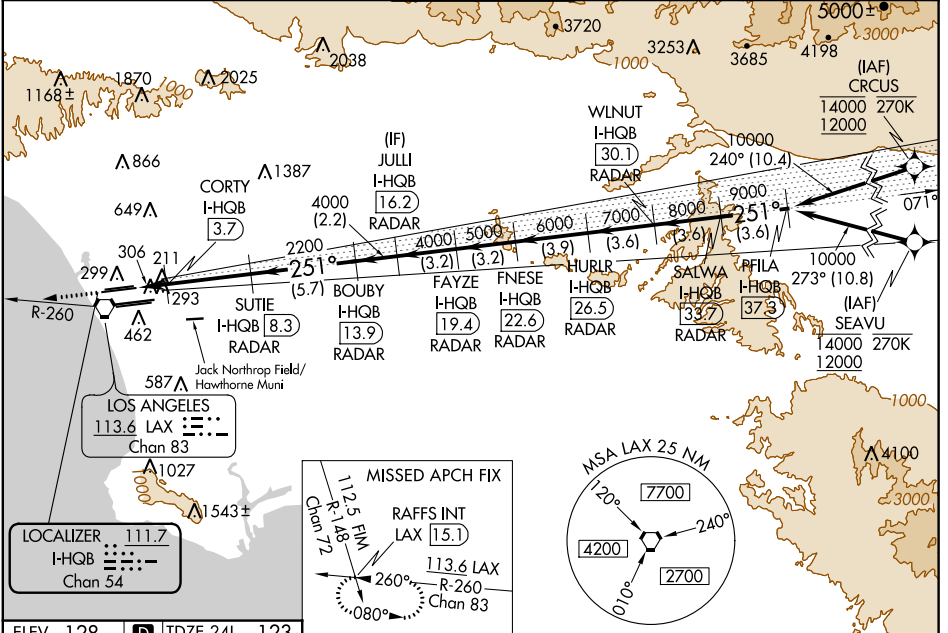
ILS or LOC RWY 24L

LOS ANGELES INTL (LAX)

From CRJCS: RNAV 1-GPS required. From SEAVU: RNAV 1-GPS required.
 DME or Radar required. RNAV 1-GPS or RADAR required for procedure entry.
 For inop ALS, increase Sidestep 24R Cat C visibility to 1½ SM. Simultaneous approach authorized. Simultaneous approach authorized with HHR. LOC procedure NA during simultaneous operations with HHR LOC RWY 25. Inop table does not apply to Sidestep Rwy 24R Cat A and B.
 # RVR 1800 authorized with use of FD or AP or HUD to DA.

MALS Rwy 24L 	ALS F-2 Rwy 24R 	MISSED APPROACH: Climb to 2000 on heading 251° and LAX VORTAC R-260 to RAFFS INT/LAX 15.1 DME and hold.
------------------	---------------------	---

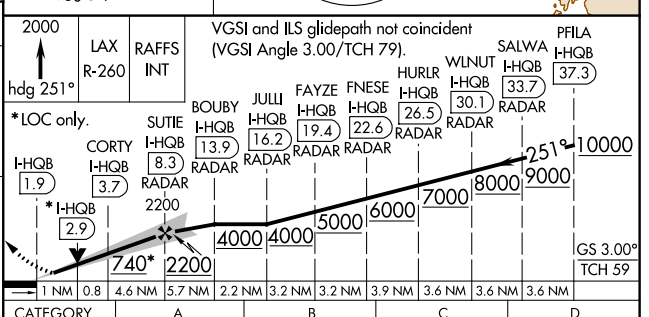
D-ATIS ARR 133.8 DEP 135.65	SOCAL APP CON 124.3 363.2 (ARCFM WEST) 124.5 235.975 (225°-044°)	124.9 269.0 (090°-224°) 128.5 360.7 (045°-089°)	LOS ANGELES TOWER N 133.9 239.3 S 120.95 379.1	GND CON N 121.65 327.0 S 121.75 327.0 W 121.4 327.0	CLNC DEL 120.35 327.0	CPDLC
---	--	--	--	---	---	-------



SW-3, 31 JAN 2019 to 28 FEB 2019

SW-3, 31 JAN 2019 to 28 FEB 2019

ELEV 128	TDZE 24L 123	TDZE 24R 122
----------	--------------	--------------



TDZ/CL Rwy 6R, 7L, 24R, and 25L	HIRL all Rwy
FAF to MAP 6.4 NM	
Knots	60 90 120 150 180
Min:Sec	6:24 4:16 3:12 2:34 2:08

2000	LAX R-260	RAFFS INT	VGSI and ILS glidepath not coincident (VGSI Angle 3.00/TCH 79).				SALWA I-HQB 33.7	PFLA I-HQB 37.3
*LOC only.								
CORTY I-HQB 1.9	SUTIE I-HQB 8.3	BOUBY I-HQB 13.9	JULI I-HQB 16.2	FAYZE I-HQB 19.4	FNESE I-HQB 22.6	HURLR I-HQB 26.5	WLNUT I-HQB 30.1	
*I-HQB 2.9								
1 NM	0.8	4.6 NM	5.7 NM	2.2 NM	3.2 NM	3.9 NM	3.6 NM	
CATEGORY A B C D								
S-ILS 24L# 323/24 200 (200-½)								
S-LOC 24L 500/24 377 (400-½) 500-1¼ 377 (400-1¼)								
SIDESTEP 24R 500/55 378 (400-1) 500-1¼ 378 (400-1¼) 500-1½ 378 (400-1½)								