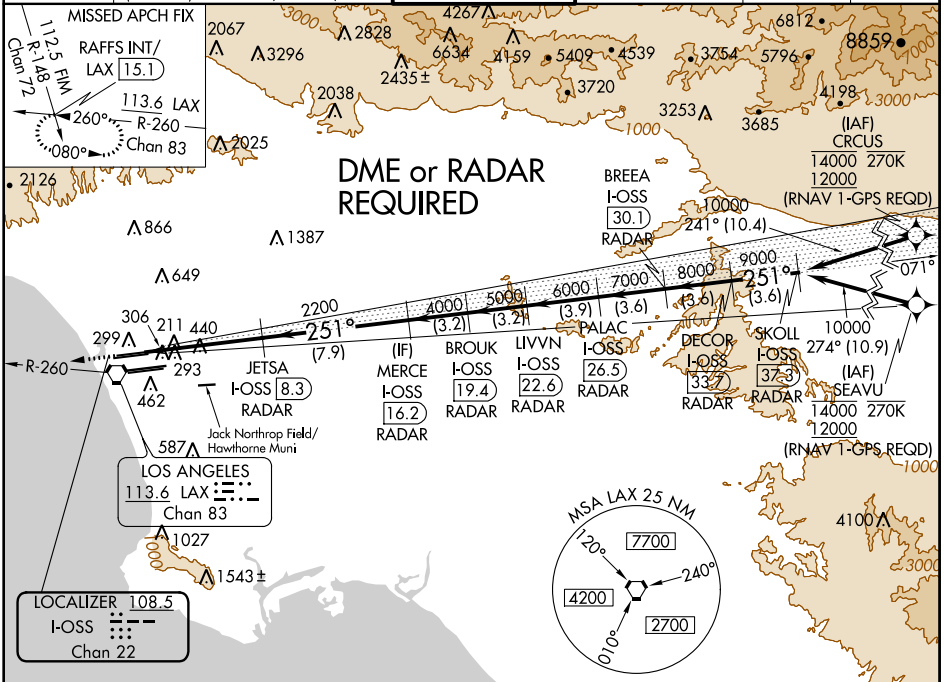


LOC/DME I-OSS 108.5 Chan 22	APP CRS 251°	Rwy Idg TDZE Apt Elev	8925 122 128
--	------------------------	-----------------------------	---

ILS RWY 24R (CAT II & III)

LOS ANGELES INTL (LAX)

D-ATIS ARR 133.8 DEP 135.65	SOCAL APP CON ARR 124.3 363.2 DEP 124.5 235.975 (APCH FM WEST) (090°-224°) (225°-044°)		LOS ANGELES TOWER N 133.9 239.3 S 120.95 379.1	GND CON N 121.65 327.0 S 121.75 327.0 W 121.4 327.0	CLNC DEL 120.35 327.0	CPDLC
	MISSED APCH FIX RAFFS INT/ LAX (15.1) 112.5 FM R-148 Chan 72 113.6 LAX 260° R-260 080° Chan 83		ALSF-2		MISSED APPROACH: Climb to 2000 on heading 251° and LAX VORTAC R-260 to RAFFS INT/LAX 15.1 DME and hold.	



ELEV 128	TDZE 122	2000	LAX R-260	RAFFS INT	VGSI and ILS glidepath not coincident (VGSI Angle 3.00/TCH 73).				SKOLL I-OSS (37.3) RADAR	
		hdg 251°	JETSA I-OSS (8.3) RADAR	MERCE I-OSS (19.4) RADAR	BROUK I-OSS (22.6) RADAR	LIVVN I-OSS (26.5) RADAR	PALAC I-OSS (30.1) RADAR	BREA I-OSS (33.7) RADAR	DECOR I-OSS (33.7) RADAR	
		GS 3.00°								TCH 55
		1025'	6.4 NM	7.9 NM	3.2 NM	3.2 NM	3.9 NM	3.6 NM	3.6 NM	
		CATEGORY	A	B	C	D				
		S-ILS 24R	CAT II RA 118/12 100 DA 222							
		S-ILS 24R	CAT III RVR 06							
CATEGORY II & III ILS - SPECIAL AIRCREW & AIRCRAFT CERTIFICATION REQUIRED										

LOS ANGELES, CALIFORNIA
Amdt 26 12OCT17

33°57'N-118°24'W

LOS ANGELES INTL (LAX) ILS RWY 24R (CAT II & III)

SW-3, 31 JAN 2019 to 28 FEB 2019

SW-3, 31 JAN 2019 to 28 FEB 2019