

# DARRK TWO DEPARTURE (RNAV)

AL-237 (FAA)

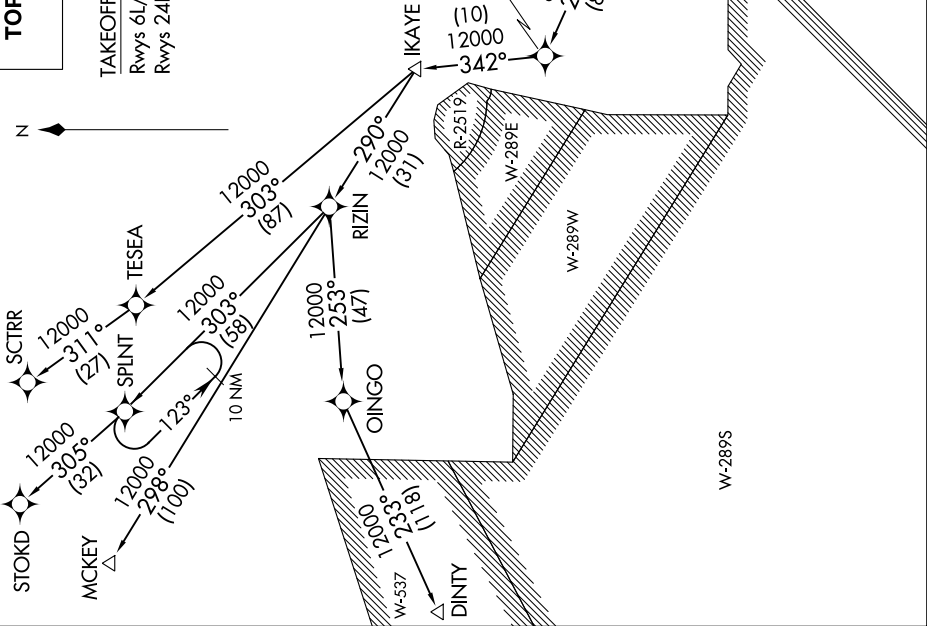
LOS ANGELES INTL (LAX)  
LOS ANGELES, CALIFORNIA

D-ATIS DEP 135.65  
CLNC DEL 120.35 327.0  
CPDLC  
GND CON  
(N) 121.65 327.0  
(S) 121.75 327.0  
(W) 121.4 327.0  
LOS ANGELES TOWER  
(N) 133.9 239.3  
(S) 120.95 379.1  
SOCAL DEP CON  
(S) 124.3 363.2 (045°-224°)  
125.2 263.025 (225°-044°)

**TOP ALTITUDE:  
FL230**

TAKEOFF MINIMUMS  
Rwys 6L/R, 7L/R: NA - ATC.  
Rwys 24L/R, 25L/R: Standard with a minimum climb  
of 500' per NM to 640'.

NOTE: RNAV 1.  
NOTE: RADAR required.  
NOTE: STOKD, SCTRR and MCKEY transitions:  
DME/DME/IRU or GPS required.  
NOTE: DINTY transitions: GPS only.  
NOTE: Turbojet aircraft only.



NOTE: Chart not to scale.

(NARRATIVE ON FOLLOWING PAGE)

# DARRK TWO DEPARTURE (RNAV)

LOS ANGELES, CALIFORNIA  
LOS ANGELES INTL (LAX)