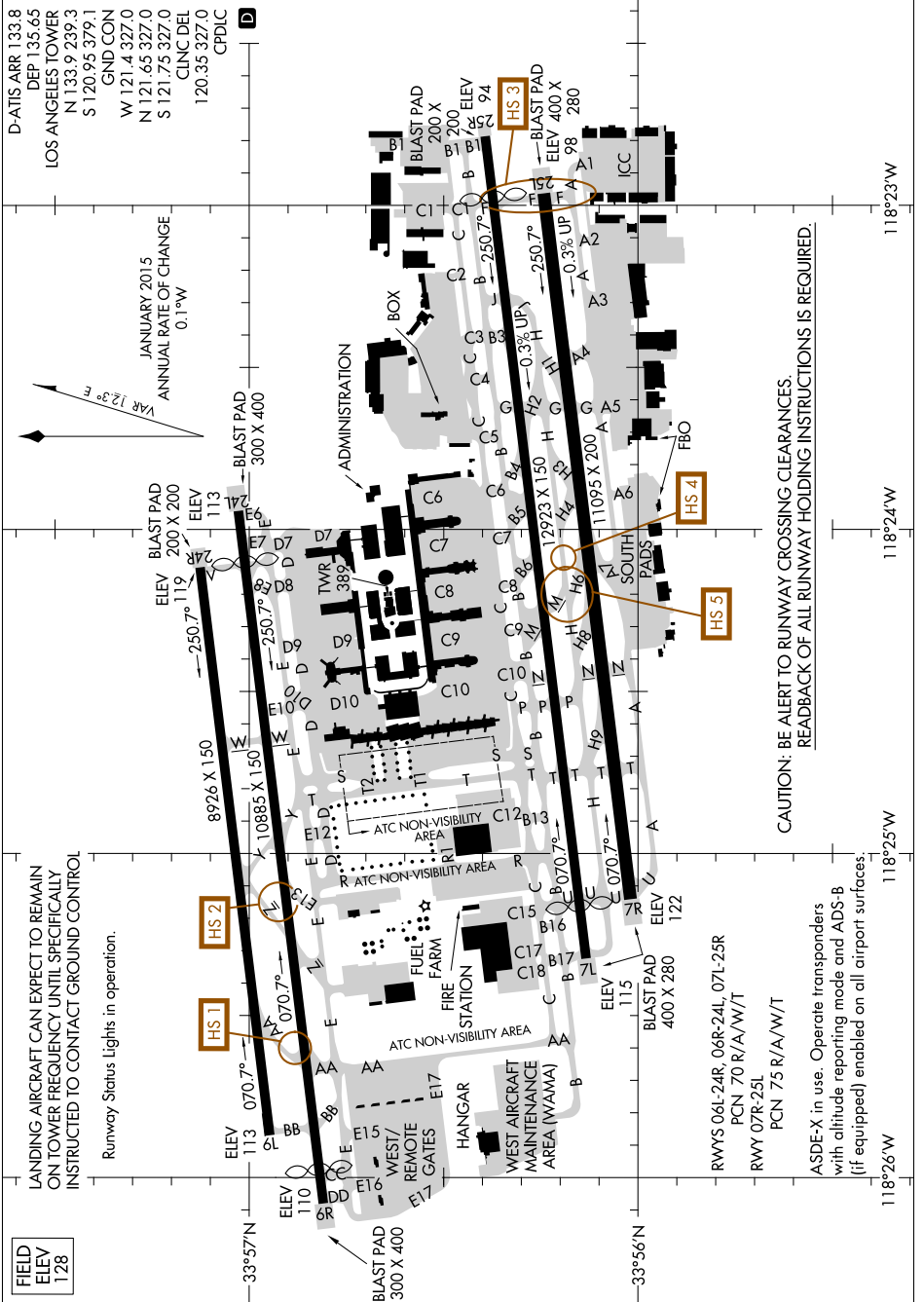


# AIRPORT DIAGRAM

AL-237 (FAA)

LOS ANGELES INTL (LAX)  
LOS ANGELES, CALIFORNIA

SW-3, 31 JAN 2019 to 28 FEB 2019



FIELD ELEV	128
------------	-----

LANDING AIRCRAFT CAN EXPECT TO REMAIN ON TOWER FREQUENCY UNTIL SPECIFICALLY INSTRUCTED TO CONTACT GROUND CONTROL

Runway Status Lights in operation.

JANUARY 2015  
ANNUAL RATE OF CHANGE  
0.1"W

VAR 123° E

CAUTION: BE ALERT TO RUNWAY CROSSING CLEARANCES  
READBACK OF ALL RUNWAY HOLDING INSTRUCTIONS IS REQUIRED.

RWYS 06L-24R, 06R-24L, 07L-25R  
PCN 70 R/A/W/T  
RWY 07R-25L  
PCN 75 R/A/W/T

ASDE-X in use. Operate transponders with altitude reporting mode and ADS-B (if equipped) enabled on all airport surfaces.

# AIRPORT DIAGRAM

LOS ANGELES, CALIFORNIA  
LOS ANGELES INTL (LAX)

SW-3, 31 JAN 2019 to 28 FEB 2019