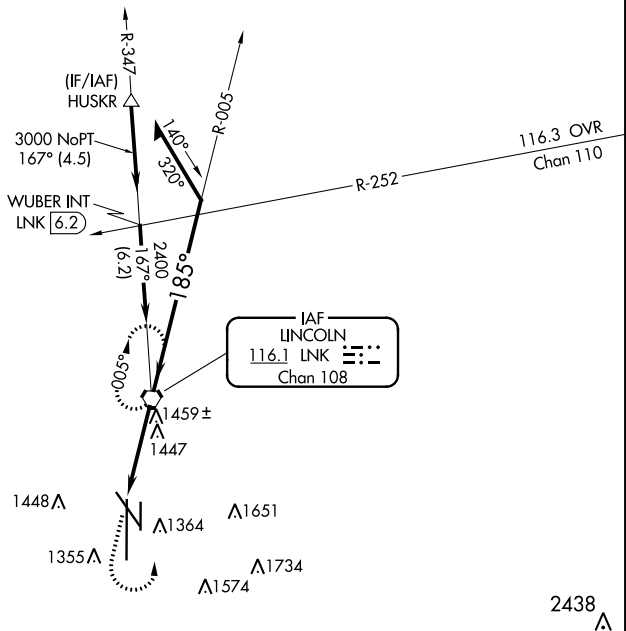
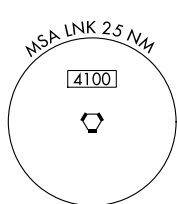


VORTAC LNK 116.1 Chan 108	APP CRS 185°	Rwy ldg 12901 TDZE 1195 Apt Elev 1219
---	------------------------	--

VOR RWY 18

LINCOLN (LNK)

	Inop table does not apply. VDP NA with Beatrice altimeter setting. When local altimeter setting not received, use Beatrice altimeter setting and increase all MDA 100 feet; increase S-18 and Circling Cat C/D visibilities ¼ mile.	MALSR	MISSED APPROACH: Climb to 2800 then climbing left turn to 3000 direct LNK VORTAC and hold.		
ATIS 118.05 290.9	OMAHA APP CON 124.0 270.3	LINCOLN TOWER* 118.5 (CTAF) 253.5	GND CON 121.9 275.8	CLNC DEL 120.7 225.4	UNICOM 122.95



NC-2, 31 JAN 2019 to 28 FEB 2019

NC-2, 31 JAN 2019 to 28 FEB 2019

ELEV 1219	D	TDZE 1195			
MIRL Rwy 14-32					
REIL Rwys 14 and 17					
HIRL Rwys 18-36 and 17-35					
FAF to MAP 3.8 NM					
Knots	60	90	120	150	180
Min:Sec	3:48	2:32	1:54	1:31	1:16

		LNK VORTAC	Remain within 10 NM	
		LNK (3.8)	LNK (2.3)	
CATEGORY	A	B	C	D
S-18	1720-1	525 (600-1)	1720-1½	525 (600-1½)
CIRCLING	1720-1 501 (600-1)	1760-1 541 (600-1)	1760-1½ 541 (600-1½)	1820-2 601 (700-2)