

WAAS CH <b>45637</b> <b>W35A</b>	APP CRS <b>357°</b>	Rwy Idg TDZE Apt Elev	<b>5800</b> <b>1196</b> <b>1219</b>
--	------------------------	-----------------------------	---

# RNAV (GPS) RWY 35

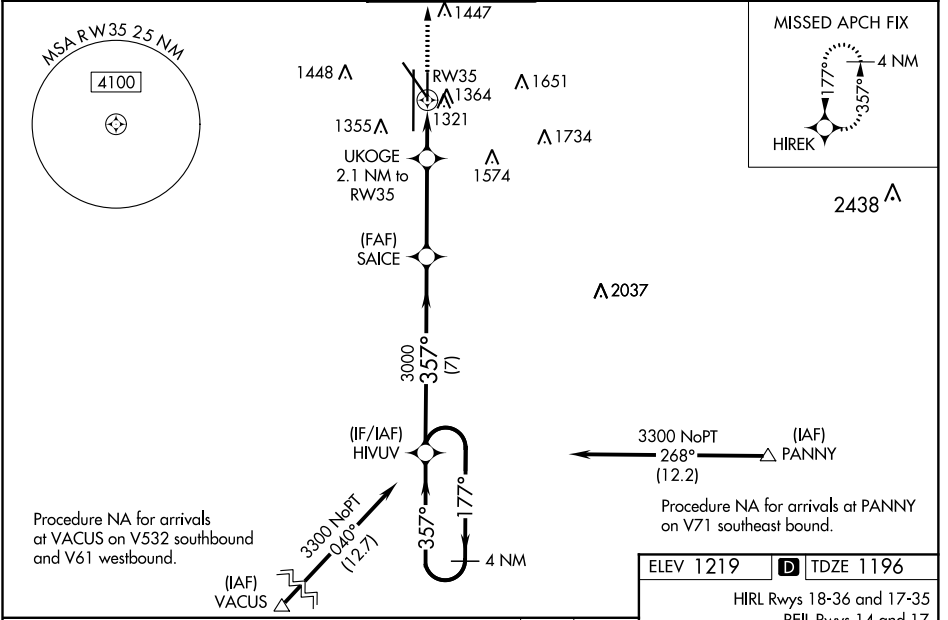
LINCOLN (LNK)

**⚠** For uncompensated Baro-VNAV systems, LNAV/VNAV NA below -21°C (-5°F) or above 54°C (130°F). DME/DME RNP-0.3 NA. When local altimeter setting not received, use Beatrice altimeter setting and increase all DA 91 feet, and all MDA 100 feet, increase LPV visibility ¼ mile all Cats, increase LNAV/VNAV visibility ⅓ mile all Cats, increase LNAV Cat C/D visibility ⅓ mile, and increase Circling Cat C/D visibility ¼ mile. For inop ODALS, increase LNAV/VNAV all Cats visibility and LNAV Cat C/D visibility to 1 ¼ mile. Baro-VNAV and VDP NA when using Beatrice altimeter setting. Helicopter visibility reduction below ⅓ SM NA.

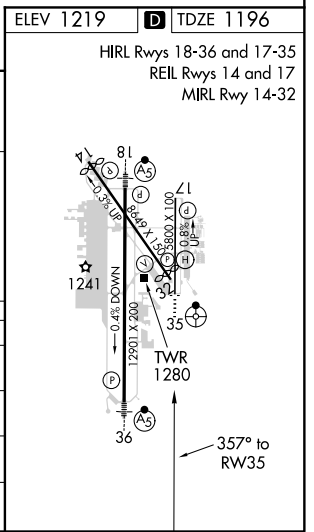
**ODALS**  
⬆  
⬆  
⬆

**MISSED APPROACH:**  
Climb to 3800 direct HIREK and hold.

ATIS <b>118.05 290.9</b>	OMAHA APP CON <b>124.0 270.3</b>	LINCOLN TOWER* <b>118.5(CTAF) 253.5</b>	GND CON <b>121.9 275.8</b>	CLNC DEL <b>120.7 225.4</b>	UNICOM <b>122.95</b>
-----------------------------	-------------------------------------	--	-------------------------------	--------------------------------	-------------------------



CATEGORY	A	B	C	D
	LPV DA	1446-¾ 250 (300-¾)		
LNAV/VNAV DA	1534-1 338 (400-1)			
LNAV MDA	1580-¾ 384 (400-¾)	1580-1 384 (400-1)		
<b>C</b> CIRCLING	1680-1 461 (500-1)	1760-1 541 (600-1)	1820-1¾ 601 (700-1¾)	1960-2½ 741 (800-2½)



NC-2, 31 JAN 2019 to 28 FEB 2019

NC-2, 31 JAN 2019 to 28 FEB 2019