

WAAS CH 50114 W18A	APP CRS 177°	Rwy Idg 12901 TDZE 1195 Apt Elev 1219
--	------------------------	--

RNAV (GPS) RWY 18

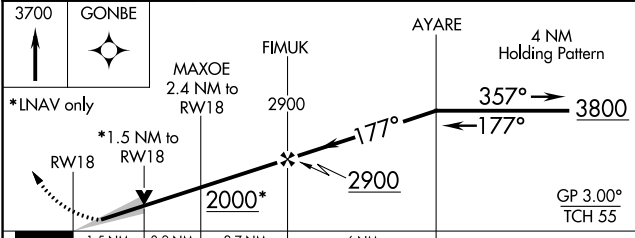
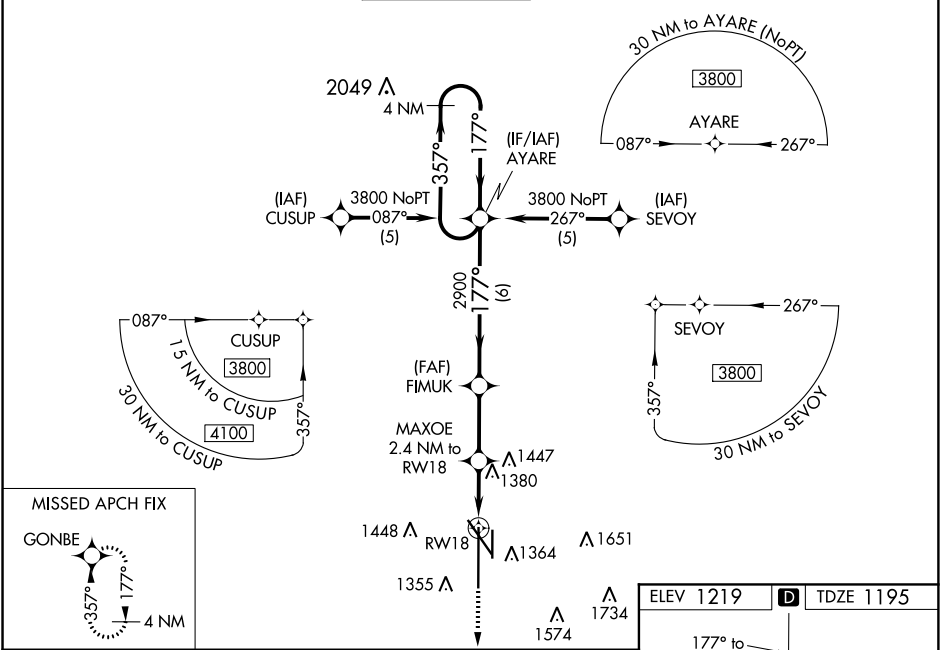
LINCOLN (LNK)

⚠ For uncompensated Baro-VNAV systems, LNAV/VNAV NA below -17°C (2°F) or above 54°C (130°F). DME/DME RNP-0.3 NA. When local altimeter setting not received, use Beatrice altimeter setting and increase all DA 91 feet, all MDA 100 feet, increase LPV all Cats, LNAV Cats C and D, and Circling Cats C and D visibilities ¼ mile, and increase LNAV/VNAV all Cats visibility ½ mile. For inop MALSRS, when using Beatrice altimeter setting increase LPV all Cats visibility to ¼ mile. Baro-VNAV and VDP NA when using Beatrice altimeter setting.

MALSRS
⊙ AS

MISSED APPROACH:
Climb to 3700 direct GONBE and hold.

ATIS 118.05 290.9	OMAHA APP CON 124.0 270.3	LINCOLN TOWER* 118.5(CTAF) 253.5	GND CON 121.9 275.8	CLNC DEL 120.7 225.4	UNICOM 122.95
-----------------------------	-------------------------------------	--	-------------------------------	--------------------------------	-------------------------



ELEV 1219	D	TDZE 1195
-----------	----------	-----------

Diagram details:

- 177° to RWY 18.
- 81 ft, 35 ft, 36 ft markers.
- 0.46 DOW X 100 ft.
- 0.36 DOW X 100 ft.
- 0.26 DOW X 100 ft.
- 0.16 DOW X 100 ft.
- 0.06 DOW X 100 ft.
- TWR 1280.
- MIRL Rwy 14-32, REIL Rws 14 and 17, HIRL Rws 18-36 and 17-35.

CATEGORY	A	B	C	D
LPV DA		1445/24	250 (300-½)	
LNAV/VNAV DA		1720/60	525 (600-1¼)	
LNAV MDA	1720/24	525 (600-½)	1720/50 525 (600-1)	1720/60 525 (600-1¼)
CIRCLING	1720-1 501 (600-1)	1760-1 541 (600-1)	1760-1½ 541 (600-1½)	1820-2 601 (700-2)

NC-2, 31 JAN 2019 to 28 FEB 2019

NC-2, 31 JAN 2019 to 28 FEB 2019