

LOC FREQ 109.9	APP CRS 357°	Rwy Idg 12901
		TDZE 1175
		Apt Elev 1219

ILS or LOC RWY 36

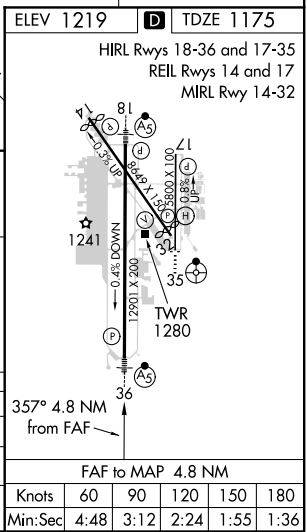
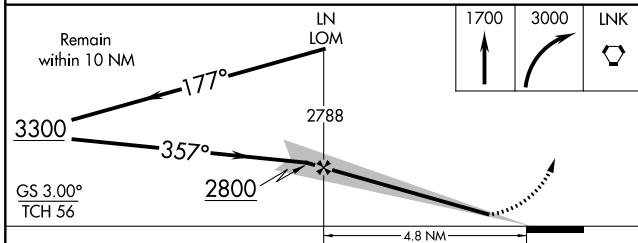
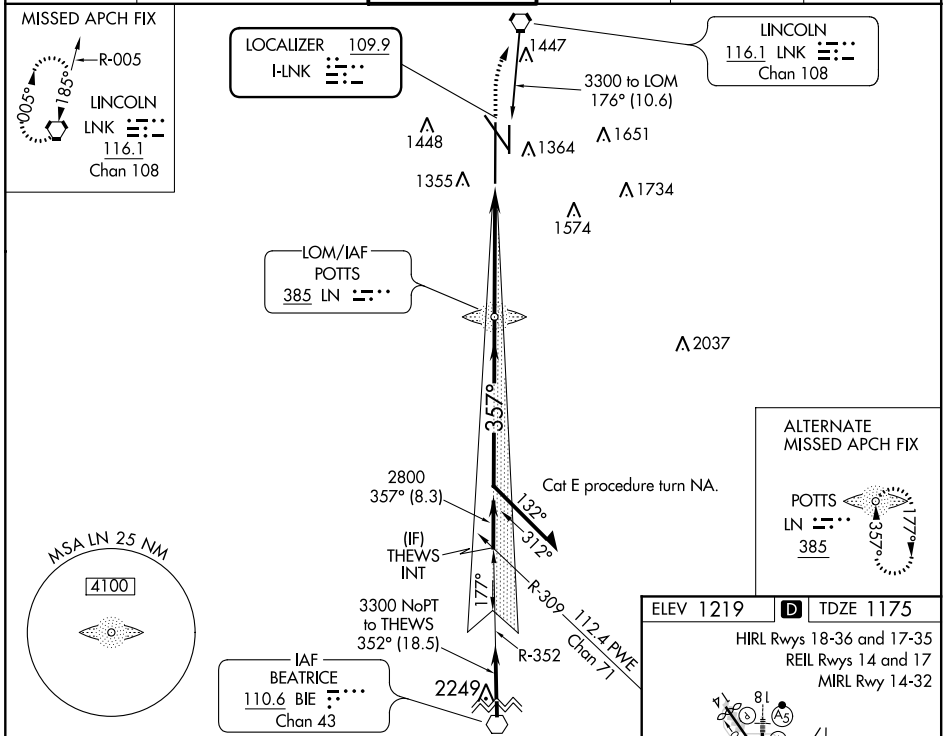
LINCOLN (LNK)

⚠ When local altimeter setting not received use Beatrice altimeter setting and increase all DA 91 feet and all MDA 100 feet, increase S-LOC 36 Cat C/D/E visibility to 1 3/4, Circling Cat C visibility to 1 3/4, and Cat D visibility to 2 1/4. For inop MALS, increase S-ILS 36 Cat E visibility to RVR 4000, S-LOC 36 Cat E visibility to 1 3/4. For inop MALS when using Beatrice altimeter setting, increase S-ILS 36 all Cats visibility to RVR 4500, S-LOC 36 Cat E visibility to 1 3/4. * RVR 1800 authorized with use of FD or AP or HUD to DA (NA when using Beatrice altimeter setting).



MISSED APPROACH:
Climb to 1700 then climbing right turn to 3000 direct LNK VORTAC and hold.

ATIS 118.05 290.9	OMAHA APP CON 124.0 270.3	LINCOLN TOWER* 118.5 (CTAF) 253.5	GND CON 121.9 275.8	CLNC DEL 120.7 225.4	UNICOM 122.95
-----------------------------	-------------------------------------	---	-------------------------------	--------------------------------	-------------------------



CATEGORY	A	B	C	D	E
S-ILS 36*	1375/24 200 (200-1/2)				
S-LOC 36	1680/24	505 (500-1/2)	1680/55	505 (500-1)	
CIRCLING	1680-1 461 (500-1)	1760-1 541 (600-1)	1760-1 1/2 541 (600-1 1/2)	1820-2 601 (700-2)	2040-3 821 (900-3)

NC-2, 31 JAN 2019 to 28 FEB 2019

NC-2, 31 JAN 2019 to 28 FEB 2019