

VORTAC LNK 116.1 Chan 108	APCH CRS 185°	Rwy ldg 12,901 TDZE 1195 Arpt Elev 1219
---	-------------------------	--

HI-VOR/DME or TACAN RWY 18

JAL-232 [USAF]

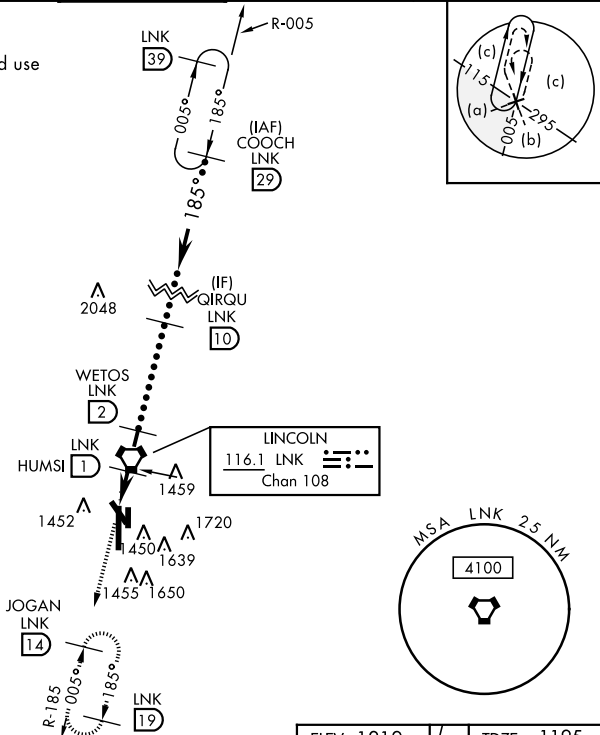
LINCOLN (KLNK)

MISSED APPROACH: Climb to 3300 via LNK VORTAC R-185 to JOGAN 14 DME and hold.

ATIS 118.05 290.9	OMAHA APP CON 124.0 270.3	LINCOLN TOWER ★ 118.5 253.5	GND CON 121.9 275.8	CLNC DEL 120.7 225.4
-----------------------------	-------------------------------------	---------------------------------------	-------------------------------	--------------------------------

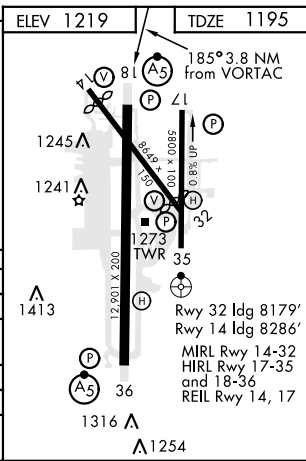
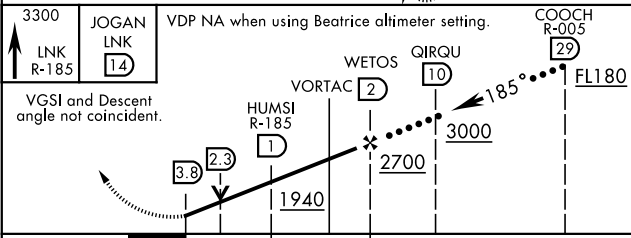
Inoperative table does not apply.

When local altimeter setting not received use Beatrice altimeter setting.



RADAR REQUIRED

EMERG SAFE ALT 100 NM 4800



CATEGORY	C	D	E
S-18	1720-1½	525	(600-1½)
CIRCLING	1760-1½ 541 (600-1½)	1820-2 601 (700-2)	2040-3 821 (900-3)
BEATRICE ALTIMETER SETTING			
S-18	1820-1¾	625	(700-1¾)
CIRCLING	1860-1½ 641 (700-1½)	1920-2¼ 701 (800-2¼)	2140-3¼ 921 (1000-3¼)

HI-VOR/DME or TACAN RWY 18

NC-2, 31 JAN 2019 to 28 FEB 2019

NC-2, 31 JAN 2019 to 28 FEB 2019