

HI-ILS or LOC/DME RWY 36

LOC I-LNK 109.9	APCH CRS 354°	Rwy ldg 12,901 TDZE 1175 Arpt Elev 1219	JAL-232 [USAF]	LINCOLN (KLNK)
---------------------------	-------------------------	--	----------------	----------------

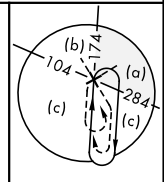
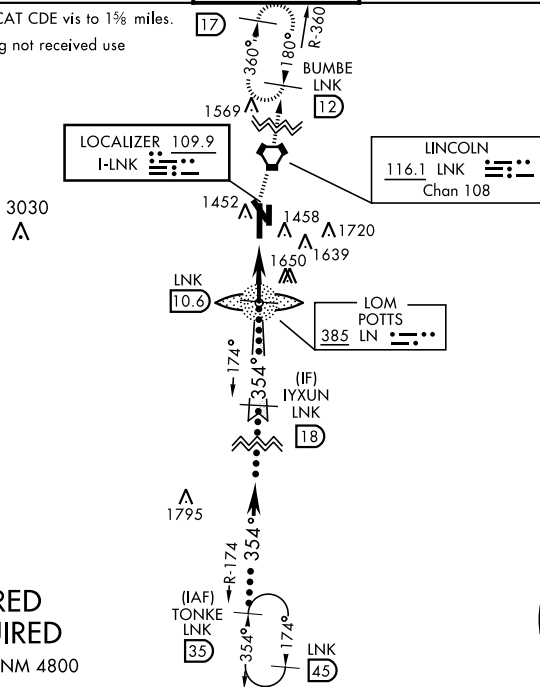
▼ * When ALS inop, increase CAT CDE RVR to 40, vis to 3/8 mile.
 ** When ALS inop, increase CAT CDE vis to 1 1/8 miles.
 *** When ALS inop, increase CAT CDE RVR to 45, vis to 7/8 mile.



MISSED APPROACH: Climb to 1700 then climbing right turn to 3000 direct LNK VORTAC then via LNK R-360 to BUMBE 12 DME and hold.

ATIS 118.05 290.9	OMAHA APP CON 124.0 270.3	LINCOLN TOWER * 118.5 253.5	GND CON 121.9 275.8	CLNC DEL 120.7 225.4
-----------------------------	-------------------------------------	---------------------------------------	-------------------------------	--------------------------------

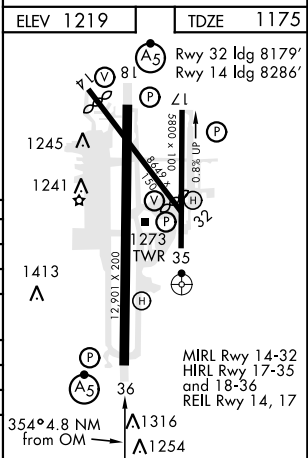
† When ALS inop, increase CAT CDE vis to 1 1/8 miles.
 When local altimeter setting not received use Beatrice altimeter setting.



**DME REQUIRED
RADAR REQUIRED**

EMERG SAFE ALT 100 NM 4800

1700	3000	BUMBE LNK 12	VGSI and Glidepath not coincident.	IYXUN Intcp Lczr 18	TONKE R-174 35
VORTAC	↑	↑	POTTS LOM 10.6	FL180	
	↑	↑	2789	4000	
	↑	↑	1860	2800	
	↑	↑	2 NM	2.8 NM	
CATEGORY	C		D	E	
S-ILS 36 *	1375/24		200	(200-1/2)	
S-LOC 36 **	1620/45		445	(500-7/8)	
CIRCLING	1760-1 1/2 541 (600-1 1/2)		1820-2 601 (700-2)	2040-3 821 (900-3)	
BEATRICE ALTIMETER SETTING					
S-ILS 36 ***	1466/24		291	(300-1/2)	
S-LOC 36 †	1720/60		545	(600-1 1/8)	
CIRCLING	1820-2 601 (700-2)		1920-2 1/4 701 (800-2 1/4)	2140-3 1/4 921 (1000-3 1/4)	



HI-ILS or LOC/DME RWY 36

NC-2, 31 JAN 2019 to 28 FEB 2019

NC-2, 31 JAN 2019 to 28 FEB 2019