

# HI-ILS or LOC RWY 18

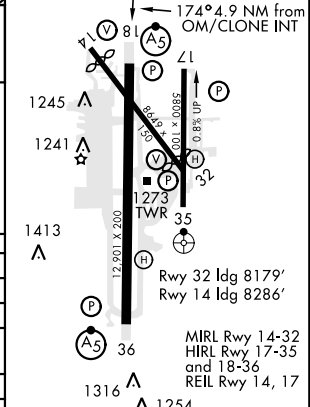
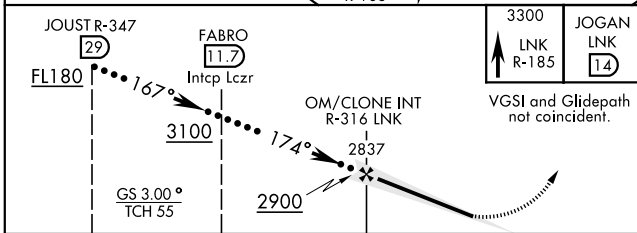
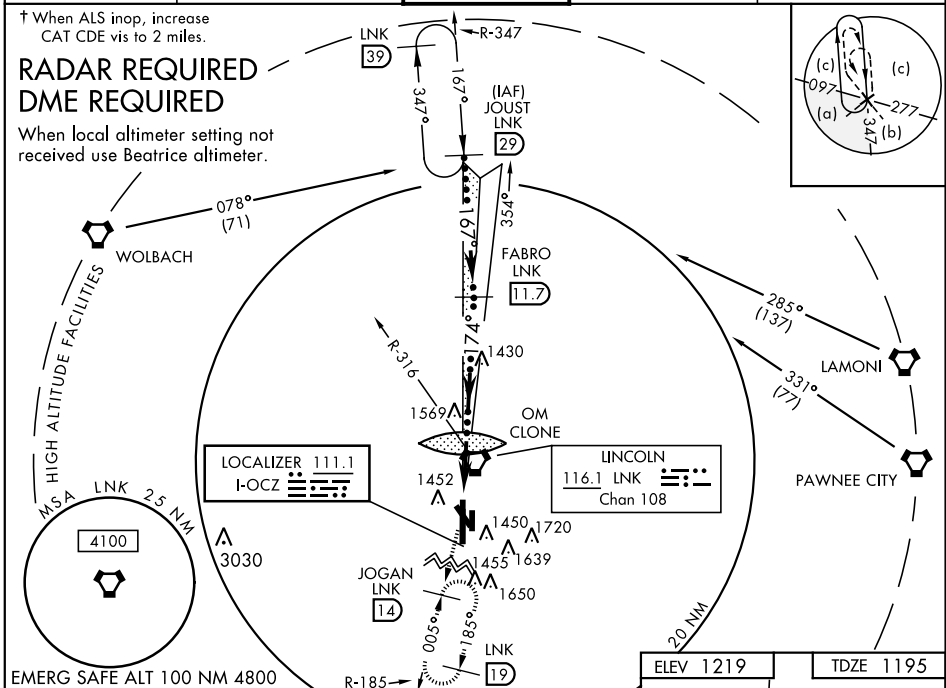
LOC I-OCZ <b>111.1</b>	APCH CRS <b>174°</b>	Rwy ldg <b>12,901</b> TDZE <b>1195</b> Arpt Elev <b>1219</b>	JAL-232 [USAF]	LINCOLN (KLNK)
---------------------------	-------------------------	--	----------------	----------------

▼ \*\* When ALS inop, increase CAT CDE RVR to 40, vis to ¾ mile.  
 \*\*\* When ALS inop, increase CAT CDE RVR to 45, vis to ⅞ mile.

MALS R (AS)

MISSED APPROACH: Climb to 3300 on LNK VORTAC R-185 to JOGAN (LNK 14 DME) and hold.

ATIS <b>118.05 290.9</b>	OMAHA APP CON <b>124.0 270.3</b>	LINCOLN TOWER * <b>118.5 253.5</b>	GND CON <b>121.9 275.8</b>	CLNC DEL <b>120.7 225.4</b>
-----------------------------	-------------------------------------	---------------------------------------	-------------------------------	--------------------------------



CATEGORY	C	D	E
S-ILS 18 *	1395/24	200 (200-½)	
S-LOC 18 **	1820-1⅜	1820-1⅝	2040-3
CIRCLING	601 (700-1¾)	601 (700-2)	821 (900-3)
BEATRICE ALTIMETER SETTING			
S-ILS 18 ***	1486/24	291 (200-½)	
S-LOC 18 †	1920-1⅝	1920-2¼	2140-3¼
CIRCLING	701 (800-2)	701 (800-2¼)	921 (1000-3¼)

FAF to MAP 4.9 NM					
Knots	120	140	160	180	200
Min:Sec	2:27	2:06	1:50	1:38	1:28

# HI-ILS or LOC RWY 18

NC-2, 31 JAN 2019 to 28 FEB 2019

NC-2, 31 JAN 2019 to 28 FEB 2019