

VOR/DME LSE	APP CRS	Rwy Idg	7426
108.4	008°	TDZE	653
Chan 21		Apt Elev	656

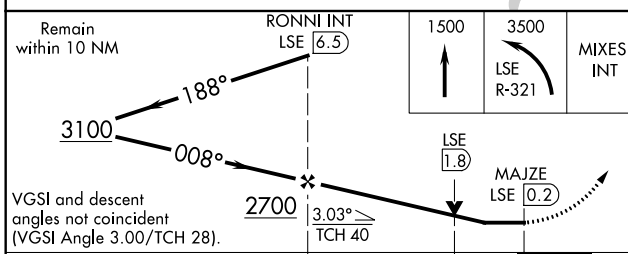
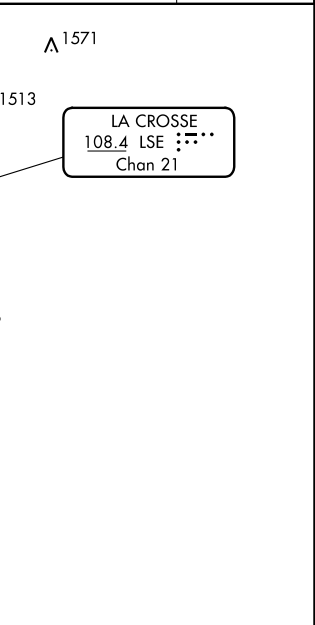
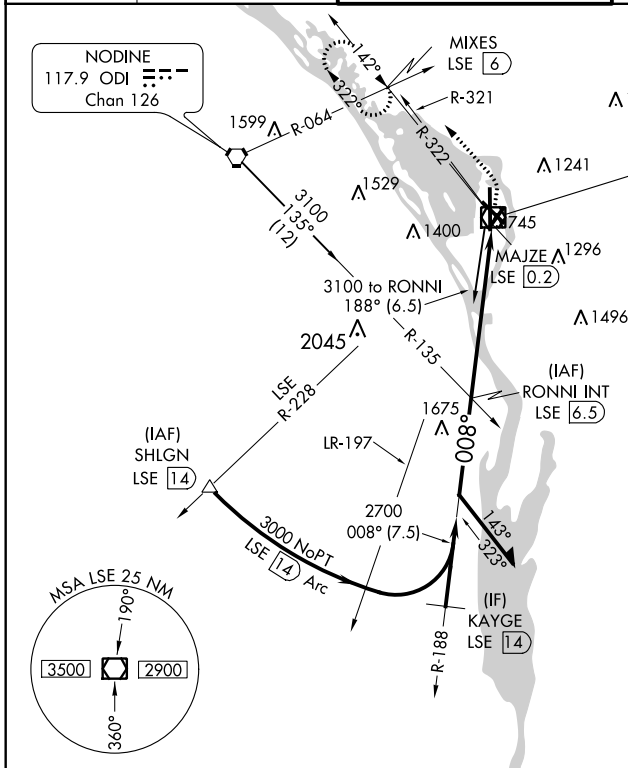
VOR RWY 36

LA CROSSE RGNL (LSE)

⚠ VPD NA with Winona altimeter setting. When local altimeter setting not received, use Winona altimeter setting and increase all MDA 60 feet, increase S-36 Cats C/D and Circling Cat B visibility ¼ mile. Helicopter visibility reduction below ¼ SM NA. Circling to Rwy 22 NA at night.

MISSED APPROACH: Climb to 1500 then climbing left turn to 3500 on LSE VOR/DME R-321 to MIXES/LSE 6 DME and hold, continue climb-in-hold to 3500.

ATIS	MINNEAPOLIS CENTER	LA CROSSE TOWER ★	GND CON	UNICOM
124.95	128.6 363.0	118.45 (CTAF) 0 251.075	121.8	122.95



ELEV 656	TDZE 653
737±	706±
695	712
36	724
3	15
13	22
008° 6.3 NM from FAF	MIRL Rwy 13-31
	HIRL Rws 4-22 and 18-36
	REIL Rws 13 and 36
	FAF to MAP 6.3 NM
Knots	60 90 120 150 180
Min:Sec	6:18 4:12 3:09 2:31 2:06

CATEGORY	A	B	C	D
S-36	1160-1 507 (600-1)	1160-1 507 (600-1)	1160-1 507 (600-1)	1160-1 507 (600-1)
C CIRCLING	1160-1 504 (600-1)	1460-1 804 (900-1)	1760-3 1104 (1200-3)	1820-3 1164 (1200-3)

EC-3, 31 JAN 2019 to 28 FEB 2019

EC-3, 31 JAN 2019 to 28 FEB 2019