

VOR/DME LSE <b>108.4</b> Chan 21	APP CRS <b>142°</b>	Rwy Idg <b>5310</b> TDZE <b>656</b> Apt Elev <b>656</b>
--	------------------------	---

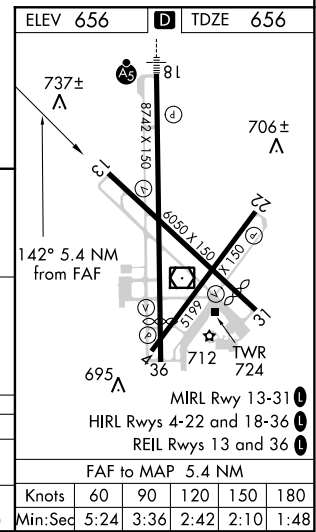
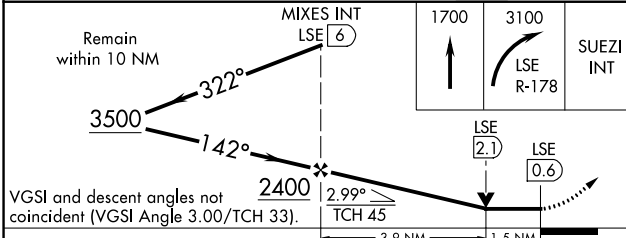
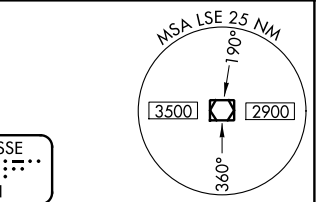
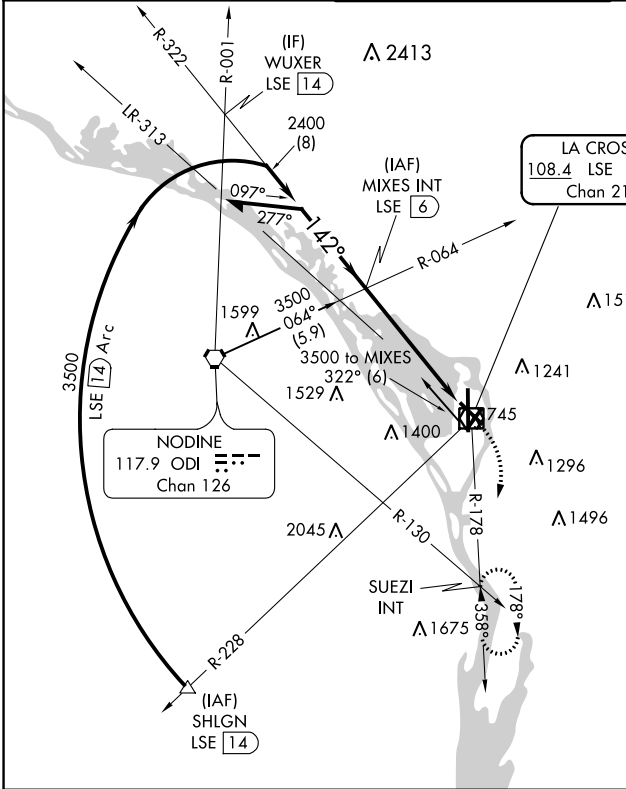
# VOR RWY 13

LA CROSSE RGNL (LSE)

**V** VDP NA with Winona altimeter setting. When local altimeter setting not received, use Winona altimeter setting and increase all MDA 60 feet, increase S-13 Cat C/D and Circling Cat B visibility ¼ mile. Helicopter visibility reduction below ¾ SM NA. Circling to Rwy 22 NA at night.

**A** MISSED APPROACH: Climb to 1700 then climbing right turn to 3100 on LSE VOR/DME R-178 to SUEZI INT and hold, continue climb-in-hold to 3100.

ATIS <b>124.95</b>	MINNEAPOLIS CENTER <b>128.6 363.0</b>	LA CROSSE TOWER ★ <b>118.45 (CTAF) 251.075</b>	GND CON <b>121.8</b>	UNICOM <b>122.95</b>
-----------------------	--	---	-------------------------	-------------------------



CATEGORY	A	B	C	D
S-13	1160-1	504 (600-1)	1160-1 3/8	504 (600-1 3/8)
<b>C</b> CIRCLING	1180-1 524 (600-1)	1460-1 804 (900-1)	1760-3 1104 (1200-3)	1820-3 1164 (1200-3)

EC-3, 31 JAN 2019 to 28 FEB 2019

EC-3, 31 JAN 2019 to 28 FEB 2019