

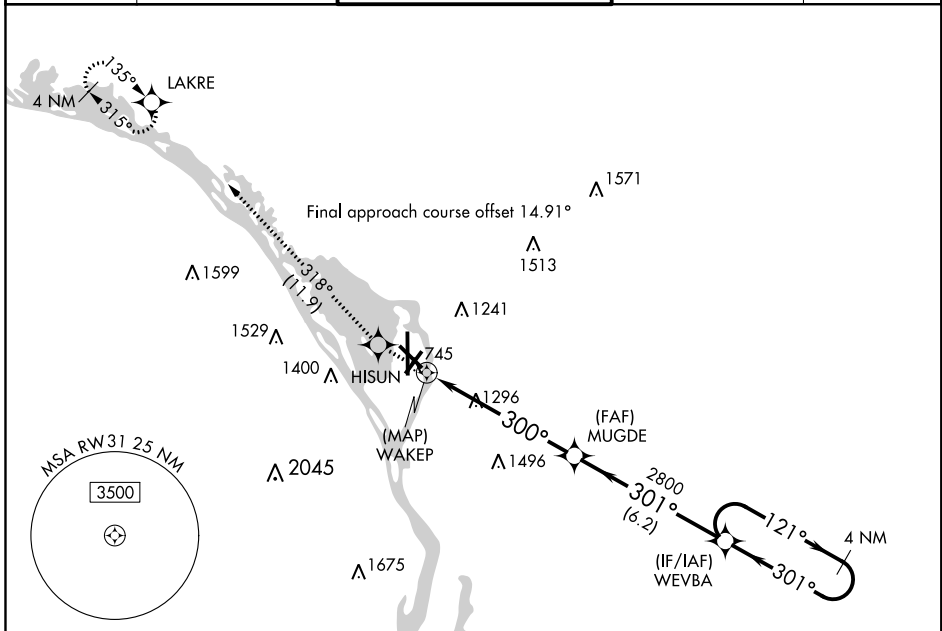
APP CRS	Rwy Idg	5310
300°	TDZE	654
	Apt Elev	656

RNAV (GPS) RWY 31

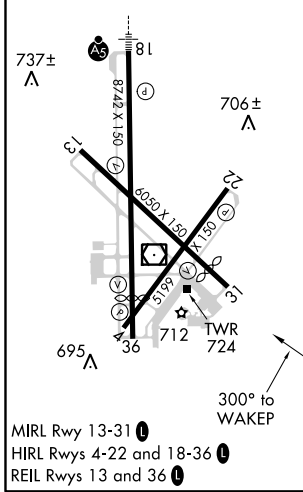
LA CROSSE RGNL (LSE)

<p>▽ DME/DME RNP-0.3 NA. Circling Rwy 22 NA at night. Helicopter visibility reduction below 1 SM NA. When local altimeter setting not received, use Winona altimeter setting and increase all MDA 60 feet.</p> <p>⚠ MISSED APPROACH: Climb to 3000 direct HISUN and on track 318° to LAKRE and hold.</p>
--

<p>ATIS 124.95</p>	<p>MINNEAPOLIS CENTER 128.6 363.0</p>	<p>LA CROSSE TOWER * 118.45 (CTAF) 251.075</p>	<p>GND CON 121.8</p>	<p>UNICOM 122.95</p>
-------------------------------	--	---	---------------------------------	---------------------------------



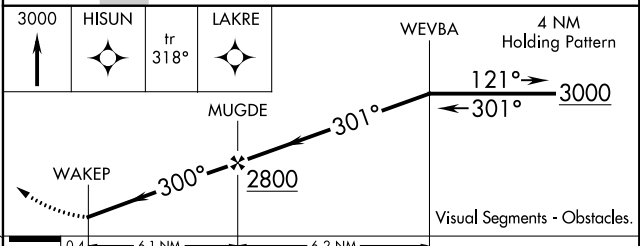
ELEV 656	D	TDZE 654
----------	----------	----------



Procedure NA for arrivals at WEVBA on V2-97-171 southeast bound.

3000 NoPT (9.4)

(IAF) WEVBA



CATEGORY	A	B	C	D
LNAV MDA	1720-1¼ 1066 (1100-1¼)	1720-1½ 1066 (1100-1½)	1720-3	1066 (1100-3)
C CIRCLING	1720-1¼ 1064 (1100-1¼)	1720-1½ 1064 (1100-1½)	1760-3	1820-3
			1104 (1200-3)	1164 (1200-3)

EC-3, 31 JAN 2019 to 28 FEB 2019

EC-3, 31 JAN 2019 to 28 FEB 2019