


WAAS CH 72809 W18A	APP CRS 180°	Rwy Idg TDZE Apt Elev	8536 653 656
--	------------------------	-----------------------------	---

RNAV (GPS) RWY 18

LA CROSSE RGNL (LSE)

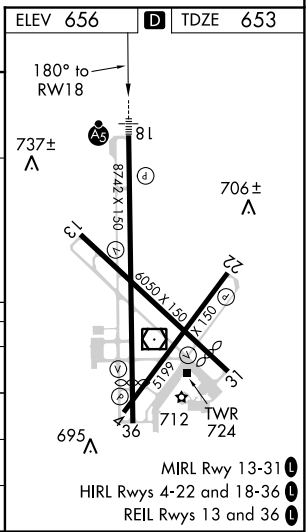
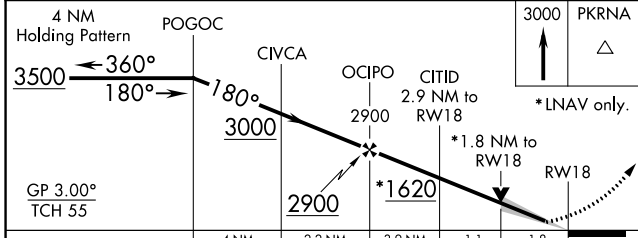
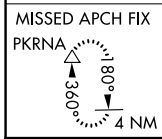
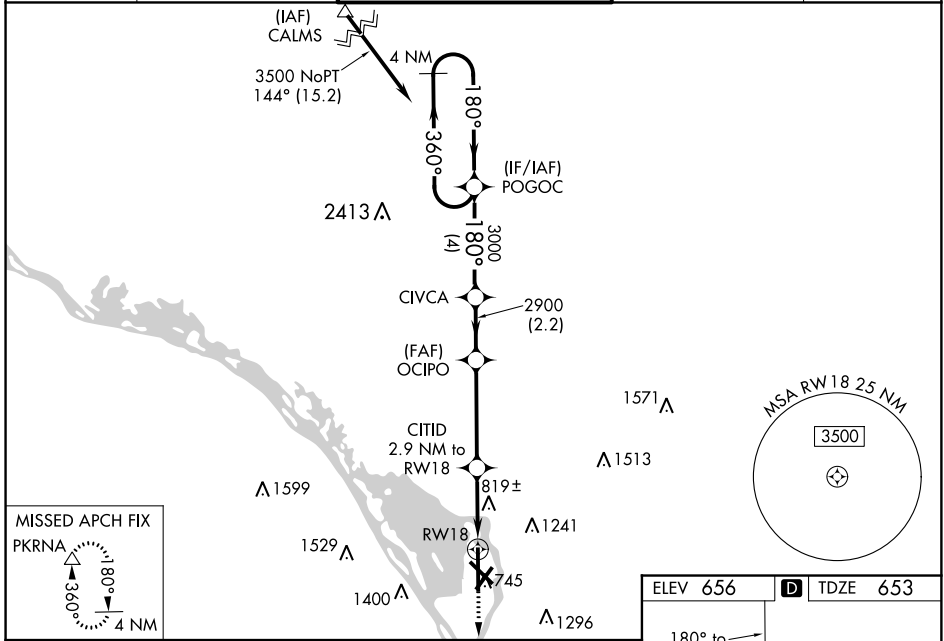
RNP APCH.

⚠ For uncompensated Baro-VNAV systems, LNAV/VNAV NA below -27° C or above 54° C. When local altimeter setting not received, use Winona altimeter setting; increase LPV DA to 987 feet, LNAV/VNAV DA to 1257 feet and all MDA 60 feet.
⚠ -20°C Increase LNAV/VNAV all Cats visibility ¼ SM and Circling Cat C visibility ¼ SM.
 For inoperative MALSR, increase LPV all Cats visibility ½ SM. LNAV minimums NA with Winona altimeter setting. Baro-VNAV and VDP NA when using Winona altimeter setting. Circling to Rwy 22 NA at night.

MALSR 

MISSED APPROACH:
Climb to 3000 direct PKRNA and hold.

ATIS 124.95	MINNEAPOLIS CENTER 128.6 363.0	LA CROSSE TOWER ★ 118.45 (CTAF) 251.075	GND CON 121.8	UNICOM 122.95
-----------------------	--	---	-------------------------	-------------------------



CATEGORY	A	B	C	D
LPV DA	925-½ 272 (300-½)			
LNAV/VNAV DA	1204-1½ 551 (600-1½)			
LNAV MDA	1360-½ 707 (800-½)	1360-1½ 707 (800-1½)	1360-1¾ 707 (800-1¾)	1360-1¾ 707 (800-1¾)
C CIRCLING	1360-1 704 (800-1)	1460-1 804 (900-1)	1760-3 1104 (1200-3)	1820-3 1164 (1200-3)

EC-3, 31 JAN 2019 to 28 FEB 2019

EC-3, 31 JAN 2019 to 28 FEB 2019